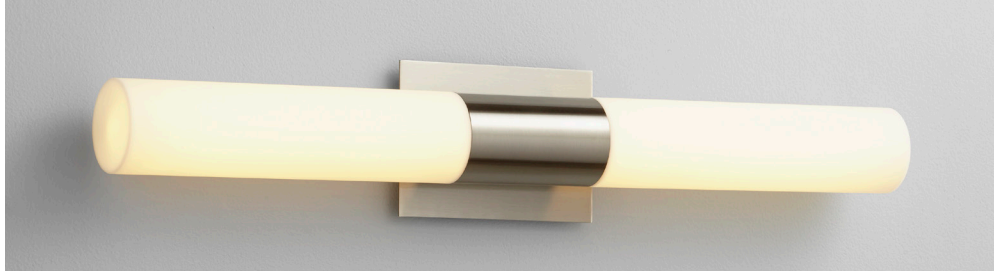


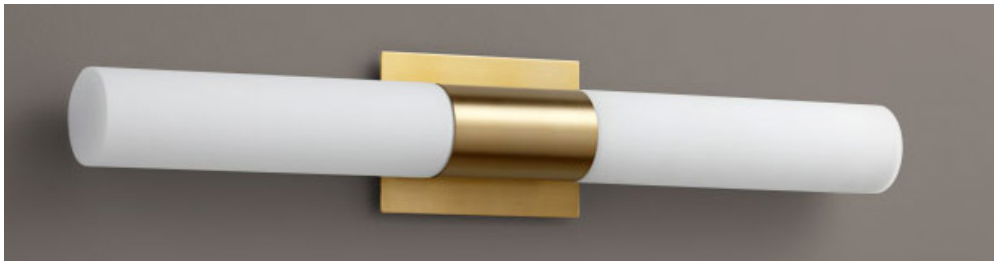
MAGNETA Vanity
3-590-xxx

oxygen

FIXTURE TYPE _____ LOCATION _____
PROJECT _____ DATE _____



-24 Satin Nickel



-40 Aged Brass

Diffusers:

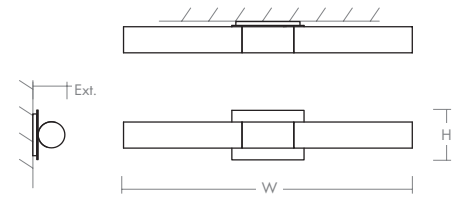


-1 White Opal Glass



- Matte White Acrylic

LIGHT SOURCE	2 x 12.1W LED, 3000K, CRI 90
LUMINAIRE POWER	28.7W at 120V
RATED LIFE	60000 hr RL
OPTIONAL COLOR TEMPERATURES	2700K, 3500K, 4000K
LUMEN OUTPUT	Delivered: (-1) Glass: 2067 lm (LM-79) Acrylic: 1872 lm (LM-79)
INPUT VOLTAGE	120V to 277V AC, 50/60Hz
DRIVER OUTPUT	700mA, 29.4W max power
DIMMING	TRIAC and ELV dimming at 120V AC; 0-10V dimming, 100% to 1% current output
CONSTRUCTION	Plated Steel and Acrylic or Glass
DIFFUSER/ METAL FINISHES	(-124) White Opal Glass/Satin Nickel (-140) White Opal Glass/Aged Brass (-24) Matte White Acrylic/Satin Nickel (-40) Matte White Acrylic/Aged Brass
MOUNTING	2" x 3" J-Box, 4" Octagonal J-Box, 4" Square J-Box with a single device mud ring
STANDARDS	UL Dry/Damp listed, ADA Compliant, Conforms to UL STD 1598, Certified CAN/CSA STD C22.2 No 250.0.



DIMENSIONS

- W:** 27.00"
- H:** 4.75"
- Ext:** 3.375"
- M.C:** 2.38" From top of fixture

Order example for standard fixture:

3-590-24 (x- Voltage - xxx-Sequence # - xx-Finish)

3: 120V to 277V

Order example for optional color temperatures: **3-590-2724**

27: 2700K, **35:** 3500K, **40:** 4000K

