

H2-COLLAR-TPDW

Helios 2 Trimless Drywall Adapter
Recess Lighting

Job Information	
Project Name	
Type	
Location	
Quantity	
Date	

Features

Material

Level 5 finish drywall with Helios 2 collar

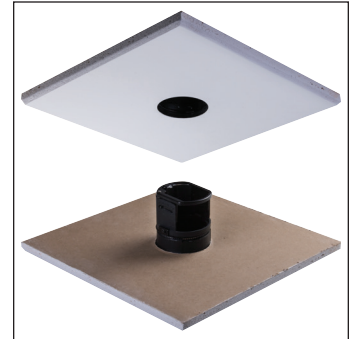
Mounting

Cut a hole in the ceiling to fit size and apply plaster to level the drywall.

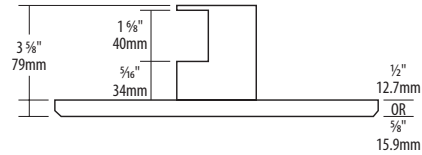
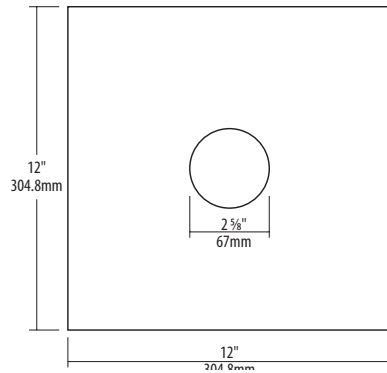
Compatible Fixtures

Helios 2 series

SPECIFICATION	
Colour	WH
Application	Recessed
Hole Cut Size	Ø 2 5/8" (67mm)
Length	12" (304.8mm)
Width	12" (304.8mm)



Technical Drawings



Ordering Guide

H2-COLLAR-TPDW	Drywall Thickness	R
	<input type="checkbox"/> 1 : 1/2" <input type="checkbox"/> 5 : 5/8"	

Notes:

Accessories are sold separately. For additional options please consult your A-Line representative. Due to our continued efforts to improve our products, product specifications are subject to change without notice.