

RF402A

4" Line Voltage Remodel Housing with Adjustable Socket

Recessed Lighting

Job Information		
Project Name		Type
Location		
Quantity		Date
Contact/Phone		
Notes		

Features

Housing

Steel construction housing. A height of 5-1/2" allows for use in 2" x 6" joist construction. Designed to accommodate ceiling thickness of up to 5/8".

Junction Box

Listed for through branch circuit wiring. Maximum eight no. 12 AWG 90°C branch circuit conductors (four in and four out). Five 1/2" knockouts with true pry-out slots and four knockouts with Romex® cable clamp. Ground wire is provided on J-Box. Three "quick connects" for fast and easy wiring.

Remodel Clips

Four remodel clips secure housing and accommodates 1/2" and 5/8" ceiling materials.

Thermal Protection

Self resetting thermal protector in transformer deactivates fixture if overheating occurs due to improper lamping or misapplied insulation.

Socket

Ceramic socket for MR16 E26, PAR16 or PAR20 lamps. The socket is mounted on an adjustable bracket that allows for control of lamp distance from trim.

Lamps

- MR16 E26, 50W max.
- LED PAR16
- PAR20, 50W max.
- LED PAR20

Listing

- cETLus listed for damp locations.
- cETLus listed for feed through.

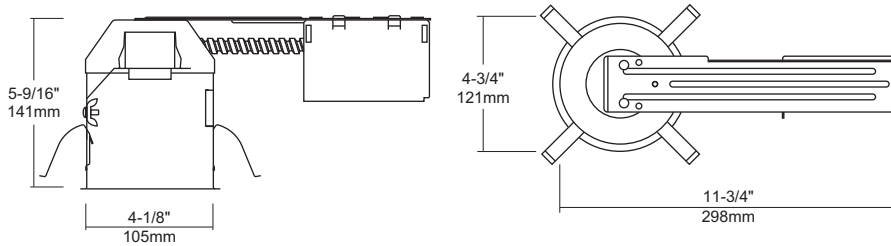
HOUSING SPECIFICATIONS

Aperture	4"
Application	Recessed
Approved Location	Damp
Base	E26
Certification	cETLus
Cuthole	4-3/8"
Housing Type	Remodel
Lamp Type	Medium Base
Max. Watt	50W
Primary Voltage	120V
Warranty	1 Year



Description

The RF402A is a 4" aperture line voltage housing with an adjustable socket for use in remodeling application to provide accent and task lighting. The RF402A offers a wide choice of trim types including reflector, wall wash and retractable trims.



Notes: Accessories should be ordered separately. For additional options please consult your Liteline representative. Romex is a registered trademark of Southwire Company. Due to our continued efforts to improve our products, product specifications are subject to change without notice.

Ordering Guide



RF402A

4" line voltage remodel housing with adjustable socket.

