

DATE: _____ PROJECT: _____ TYPE: _____

CATALOG NUMBER LOGIC:



CATALOG NUMBER LOGIC

AL - 531 - BLP

SERIES

AL - Alps

LAMP TYPE

0 - By Others

530 - 15.5W/15DEG/2700K

531 - 15.5W/25DEG/2700K

532 - 15.5W/40DEG/2700K

533 - 15.5W/15DEG/3000K

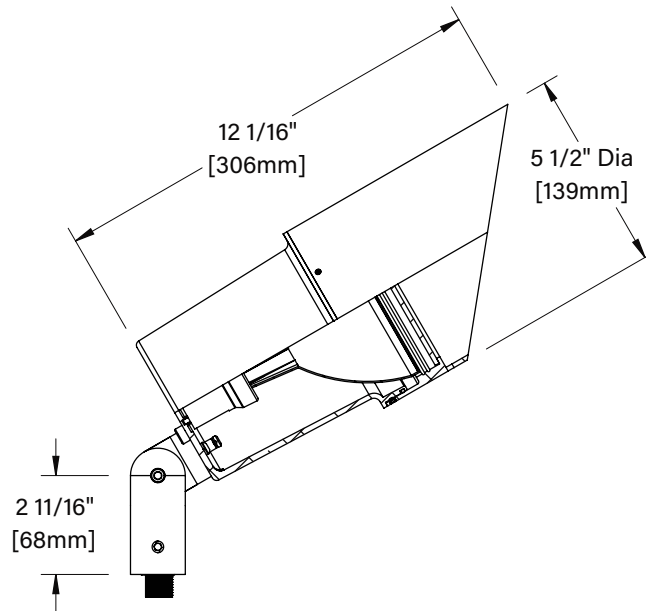
534 - 15.5W/25DEG/3000K

535 - 15.5W/40DEG/3000K

536 - 15.5W/40DEG/4000K

FINISH (See below for full-color swatches)

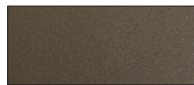
Standard Finishes (BZP, BZW, BLP, BLW, WHP, WHW, SAP, VER)



STANDARD FINISHES



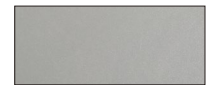
Satin Black (BLP)



Satin Bronze (BZP)



Satin White (WHP)



Satin Aluminum (SAP)



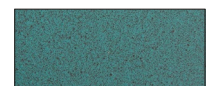
Black Wrinkle (BLW)



Bronze Wrinkle (BZW)



White Wrinkle (WHW)



Verde (VER)

[Click here](#) to view larger color swatches of these finishes on our website

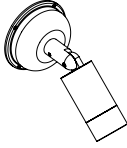


DATE: _____ PROJECT: _____ TYPE: _____

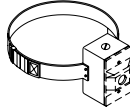
ACCESSORIES (Configure separately)



Power Pipe



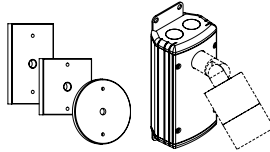
Power Canopy



Tree Strap



Stems



Canopies

UPM

SPECIFICATIONS

ELECTRICAL	WATTAGE	15.5W
	WIRING	Teflon® coated wire, 18AWG, 600V, 250° C rated and certified to UL 1659 standard. Leads extended 6" beyond knuckle.
	LINE VOLTAGE	For use with 120V. No transformer required.
PHYSICAL	MATERIALS	Furnished in copper-free aluminum (6061-T6).
	BODY	Unibody design with enclosed, water-proof wireway and integral heat sink is fully machined from solid billet.
	KNUCKLE	360HD Mounting System features a mechanical taperlock, allowing full 180° vertical adjustment without the use of aim-limiting serrated teeth. High temperature, silicone 'O' Ring provides water-tight seal and compressive resistance to maintain fixture position. Design withstands 73 lbs. static load prior to movement for optical alignment with a ½" pipe thread for mounting. Biaxial source control additionally provides 360° horizontal rotation in addition to vertical adjustment. Aim & Lock technology allows precision adjustment without the redundant tightening and loosening of knuckle screw. 360HD hardware is stainless steel with black oxide treatment for additional corrosion resistance.
	CAP	Fully machined, 45° cap style that includes a weep-hole for water and debris drainage. Accommodates two (2) lens or louver media.
	LENS	Shock resistant, tempered, glass lens is factory adhered to fixture cap and provides hermetically sealed optical compartment.
	SOCKET	Specification grade ceramic body lamp holder. Medium base (E26), nickel-plated copper alloy lamp grip and screw shell. Corrosion resistant coil spring under center contact.
	LAMP TYPE	PAR38 Green Creative LED lamp, Title 20 compliant. Halogen sourced by others.
	WATER MANAGEMENT	Patented Anti-Condensation Valve (ACV) vacuum seals optical chamber and eliminates internal condensation. Spring loaded exterior mounted ACV button facilitates removal of vacuum sealed cap for service and re-initiates vacuum seal through normal fixture operation.
	HARDWARE	Tamper-resistant, stainless steel hardware. 360HD hardware is black oxide treated for additional corrosion resistance.
	WIRING	Teflon coated wire, 18 AWG, 600V, 250° C rated and certified to UL 1659 standard. Leads extended 6" beyond knuckle.
	FINISH	StarGuard, our 15-stage chromate-free process cleans and conversion coats aluminum components prior to application of Class 'A' TGIC polyester powder coating and is RoHS compliant.
	WARRANTY	5-year limited warranty.
CERTIFICATION & LISTING	ITL tested to IESNA LM-79. UL Listed. Certified to CAN/CSA/ANSI Standards. RoHS compliant. Suitable for indoor or outdoor use, in wet locations, and for installation within 4' of the ground. IP66 Rated. Made in the USA with sustainable processes.	

