

DATE: _____ PROJECT: _____ TYPE: _____

CATALOG NUMBER LOGIC:



CATALOG NUMBER LOGIC

NS - 502 - BLP

SERIES

NS - Nite Star

LAMP TYPE

0 - By Others

500 - 7W/15DEG/2700K

501 - 7.5W/25DEG/2700K

502 - 7.5W/35DEG/2700K

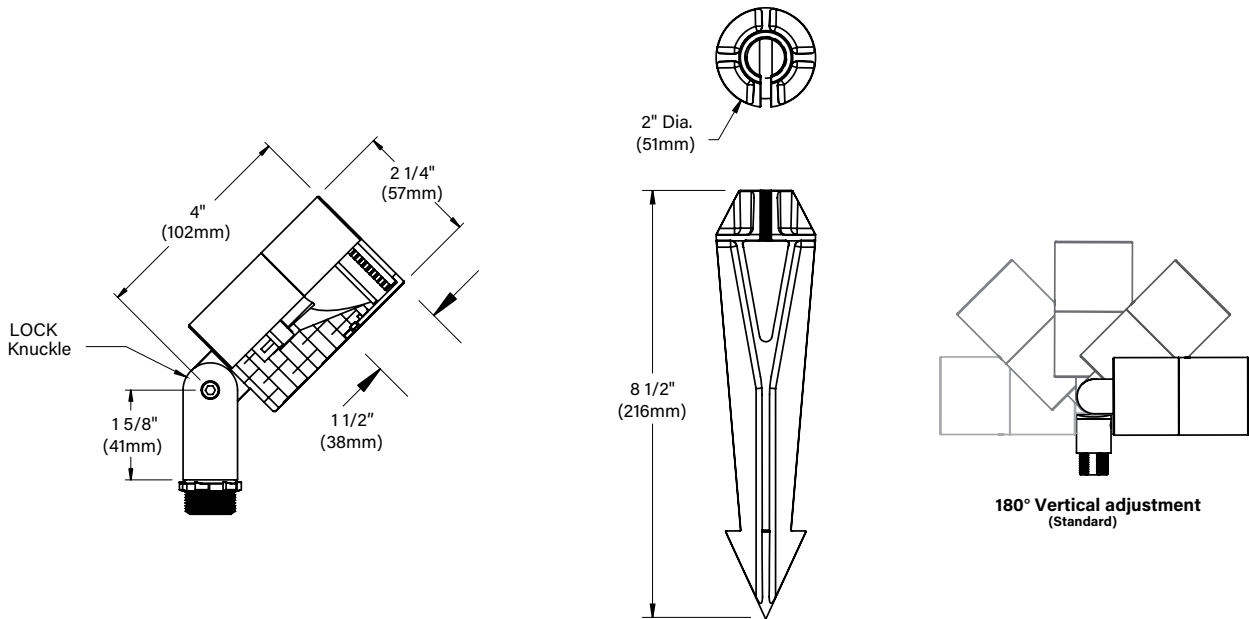
503 - 7W/15DEG/3000K

504 - 7.5W/25DEG/3000K

505 - 7.5W/35DEG/3000K

FINISH (See below for full-color swatches)

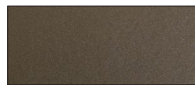
Standard Finishes (BZP, BZW, BLP, BLW, WHP, WHW, SAP, VER)



STANDARD FINISHES



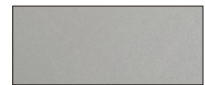
Satin Black (BLP)



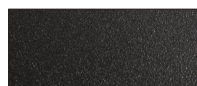
Satin Bronze (BZP)



Satin White (WHP)



Satin Aluminum (SAP)



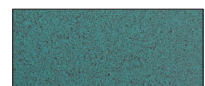
Black Wrinkle (BLW)



Bronze Wrinkle (BZW)



White Wrinkle (WHW)



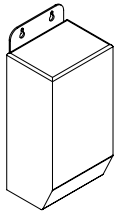
Verde (VER)

[Click here](#) to view larger color swatches of these finishes on our website

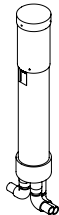


DATE: PROJECT: TYPE:

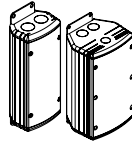
ACCESSORIES (Configure separately)



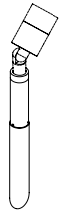
TR Series



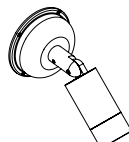
Power Pipe



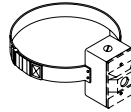
UPMRM



Power Pipe



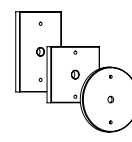
Power Canopy



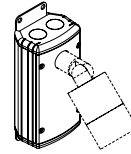
Tree Strap



Stems



Canopies



UPM

SPECIFICATIONS

ELECTRICAL	<p>WATTAGE WIRING TRANSFORMER</p>	<p>7W or 7.5W Teflon® coated wire, 18AWG, 600V, 250° C rated and certified to UL 1659 standard. For use with 12 VAC remote transformer.</p>
PHYSICAL	<p>MATERIALS BODY KNUCKLE CAP LENS SOCKET LAMP TYPE HARDWARE FINISH WARRANTY CERTIFICATION & LISTING INCLUDED ITEMS</p>	<p>Furnished in copper-free aluminum (6061-T6). Unibody design is fully machined from solid billet and provides enclosed, water-proof wireway and heat sink to maximize lamp life. High temperature, silicone 'O' Ring provides watertight seal. LOCK Knuckle is comprised of two components. The first is integral to the body and features an interior, machined taper. The second is machined from solid billet and features a second, reverse angle taper. The resultant mechanical taper-lock allows a full 180° vertical adjustment without the use of serrated teeth, which inherently limit aiming. High temperature, silicone 'O' Ring provides water-tight seal and compressive resistance to maintain fixture position. Design withstands 73 lb. static load prior to movement to ensure decades of optical alignment. ½" pipe thread for mounting. Fully machined with a flush mounted lens. Shock resistant, tempered, clear glass lens is factory adhered to fixture cap and provides hermetically sealed optical compartment. Specification grade, ceramic body lamp holder. GU5.3 base. Nickel allow contacts and heat resistant, spring loaded, stainless steel lamp retaining clips. MR16 Green Creative LED Lamp, Title 20 and Title 24, JA8 compliant. Compatible with 50 watt maximum, MR16 lamp.* Not for use with IR technology lamps. Halogen sourced by others. *Except GE Light Q42MR16/C/VNSP9 (EZY). Tamper-resistant, stainless steel hardware. LOCK aiming screw is black oxide treated for additional corrosion resistance. StarGuard, our 15-stage chromate-free process cleans and conversion coats aluminum components prior to application of Class 'A' TGIC polyester powder coating and is RoHS compliant. 5-year limited warranty. UL Listed. Certified to CAN/CSA/ANSI Standards. RoHS compliant. Title 24 and JA8 compliant (when using factory lamp options). Suitable for indoor or outdoor use, in wet locations, and within 4' of the ground. Made in the USA with sustainable processes. Fixture, mounting stake, and Honeycomb Baffle accessory.</p>

