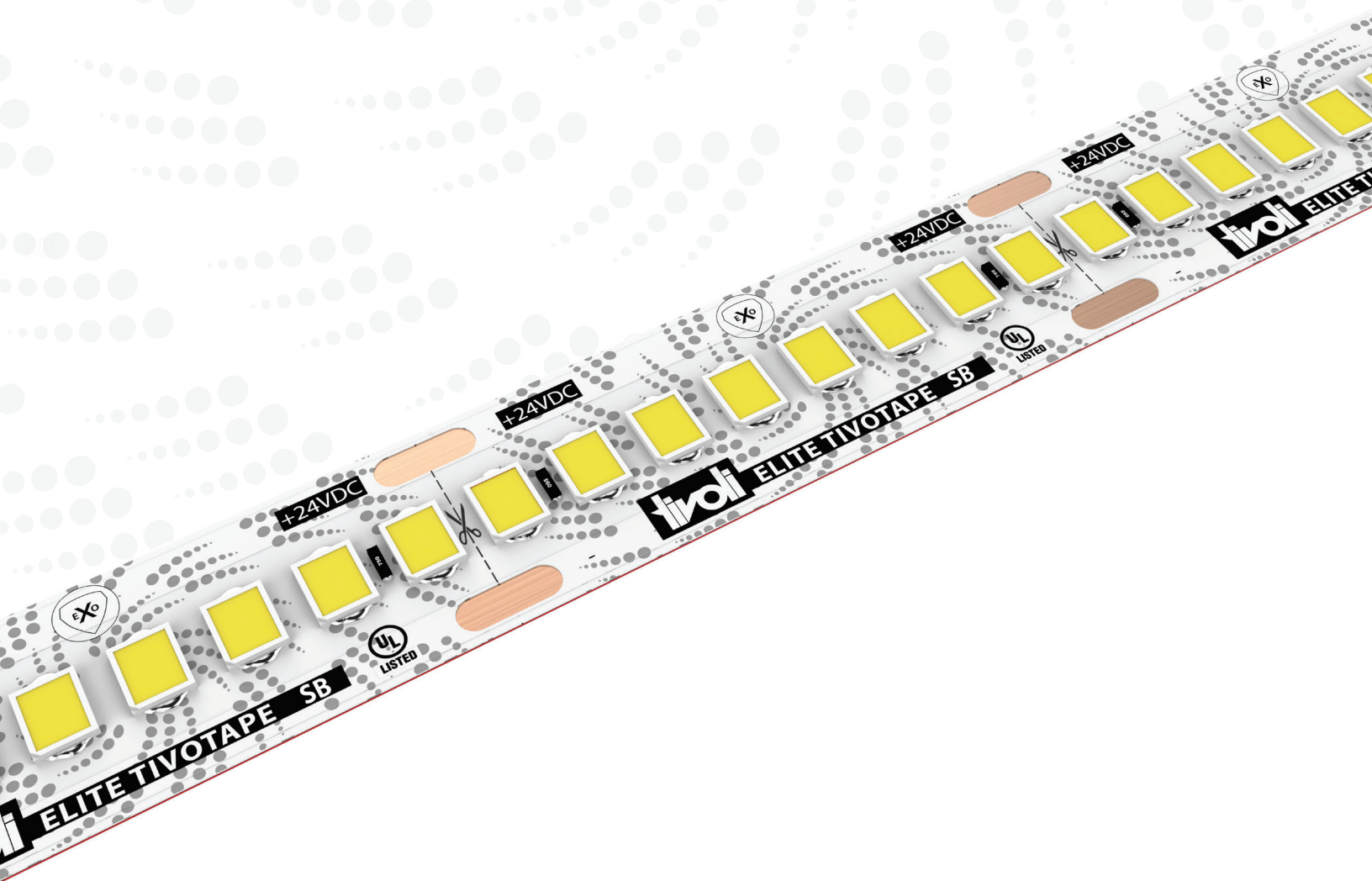




# ELITE

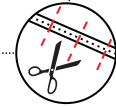
ZERO DROP TECHNOLOGY



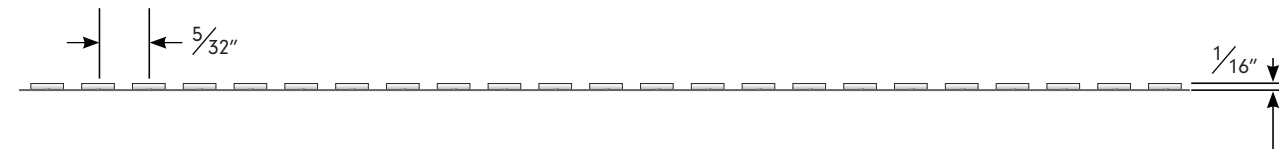
## Standard Brightness (SB)



15 3/32"



Cuttable 1-5/16"



5/32"

1/16"

- 3.2W/ft  
355LM/ft
- 4oz. Trace
- 111**  
EFFICACY  
LEVEL  
High Efficacy
- HIGH  
CRI  
95 CRI
- JAB  
CA24  
COMPLIANT  
Compliant
- 3M**  
VHB Adhesive
- IP54
- eXo Shield

- 2200K
- 2400K
- 2700K
- 3000K
- 3500K
- 4000K
- 5000K

## Ordering Information



PRODUCT CODE	INTENSITY	INSTALL	LED COLOR	VOLTAGE
TPLE	SB	I		24
<small>TPLE = TivoTape ELITE</small>	<small>SB = Standard Brightness</small>	<small>I = Indoor</small>	<small>22 = 2200K 24 = 2400K 27 = 2700K 30 = *3000K 35 = 3500K 40 = 4000K 50 = 5000K</small>	<small>24 = 24V DC</small>



**TivoTape Run Lengths & End Preps**  
 Please specify length of run with quantity of run(s)  
 and end prep type at time of ordering.  
 Note: Only (1) end prep needed for each run (see page 19)

\*This product is in compliance with the California Energy Code Title 24 JA8-2016 in 3000K and only when incorporating a specific power supply.



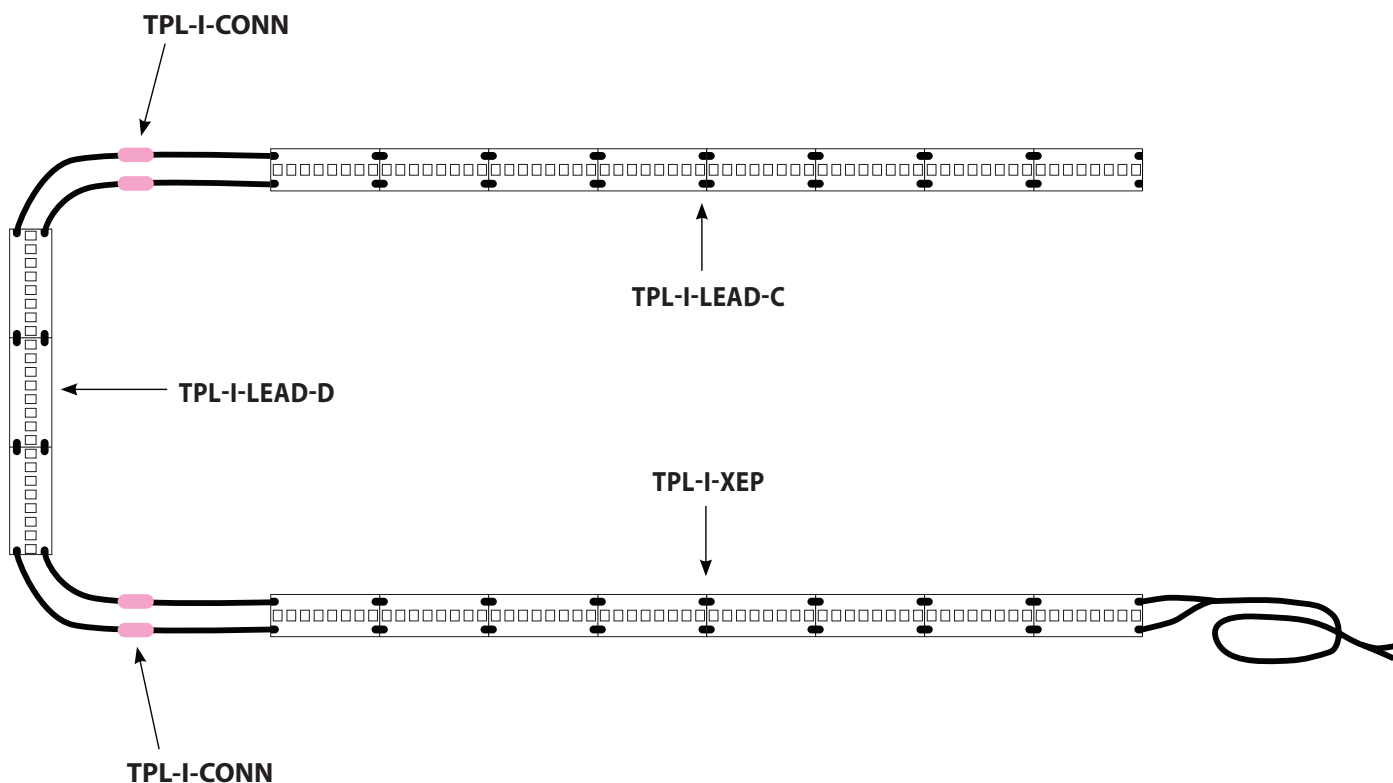
**SB Data**

Electrical & Photometric Data (Based on 95 CRI / 3000K)							
Input Voltage	24V DC						
Dimming Option	MLV/ELV/0-10V						
Power Supply	Class 2						
Wire Size (End Prep)	18 AWG, 2 wire						
Power Consumption	3.2 W/ft.						
Color Temperature (CCT)	2200K	2400K	2700K	3000K	3500K	4000K	5000K
Lumen Output	317	333	352	355	362	378	381
Efficacy	100	104	110	111	113	117	119
Color Rendering Index (CRI)	99	97	97	97	94	93	90
R9	93						
TM-30-15 Fidelity Index ( $R_f$ )	87						
TM-30-15 Gamut Index ( $R_g$ )	95						

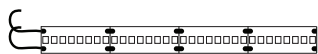
Physical	
LED Package	2835
Cut Increments	1 5/16"
LEDs/ft	73
Operating Temperature	-40°F (-40°C) ~ +140°F (+60°C)
Environment	IP54 Damp Location, Conformal eXo Shield Coated
Maximum Run Length	29'
Maximum Run Length w/ JA8 Compliant Power Supply	24'
Copper Trace	4 Ounce
Adhesive	3M VHB Tape
Dimension	15/32" (12mm)

Performance	
Certification	UL Listed
Lumen Maintenance (L70) Hours	60,000
Binning Tolerance	1.5 Step MacAdam Elipse
Warranty	5 Years

Power Leads and Jumpers (Installed by Tivoli's certified solderers)



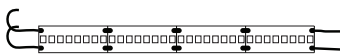
Power Leads and Jumpers **Must Be Specified For Each Run At Time Of Ordering.**



**TPL-I-LEAD-C**

**LEAD END**

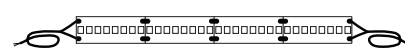
24" standard 2 conductor 18AWG lead wire factory attached to one end of tape.



**TPL-I-LEAD-D**

**LEAD/LEAD**

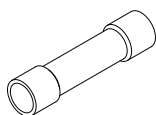
24" standard 2 conductor 18AWG lead wire factory attached to both ends of tape.



**TPL-I-XEP**

**EXTRA LEAD WIRE**

Additional factory attached 18AWG lead wire to extend lengths of LEAD-C and LEAD-D up to 20 ft max. Sold per foot (not shipped as spooled wire).

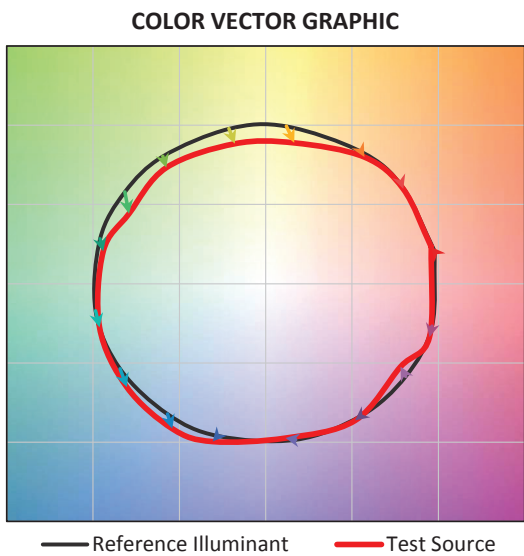
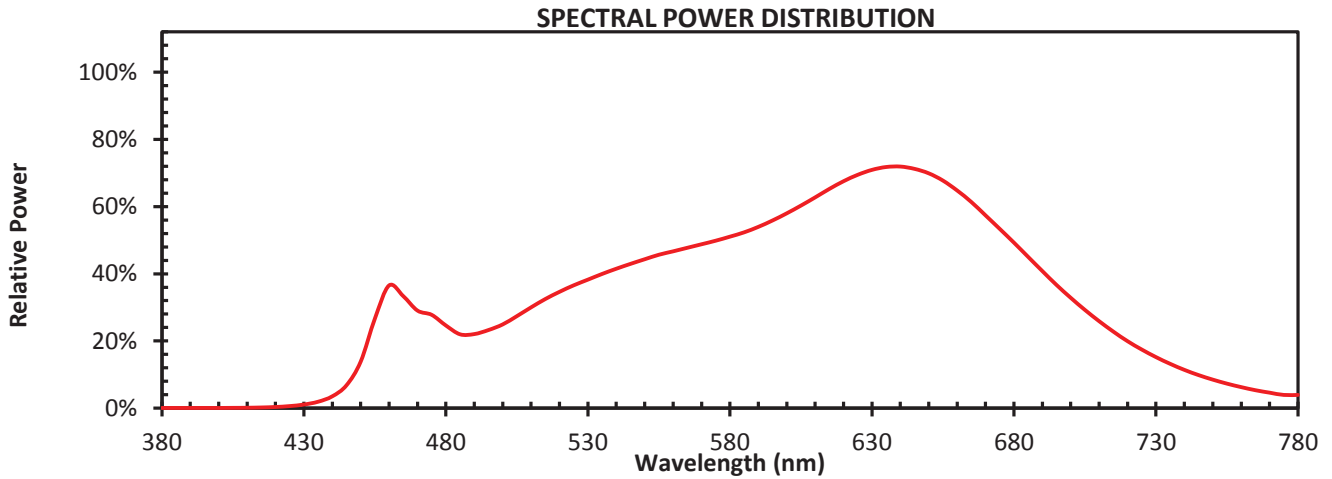


**TPL-I-CONN**

**18-22AWG BUTT CONNECTORS**

Used to interconnect factory attached lead wires. Sold individually. (2 ea required per connection).

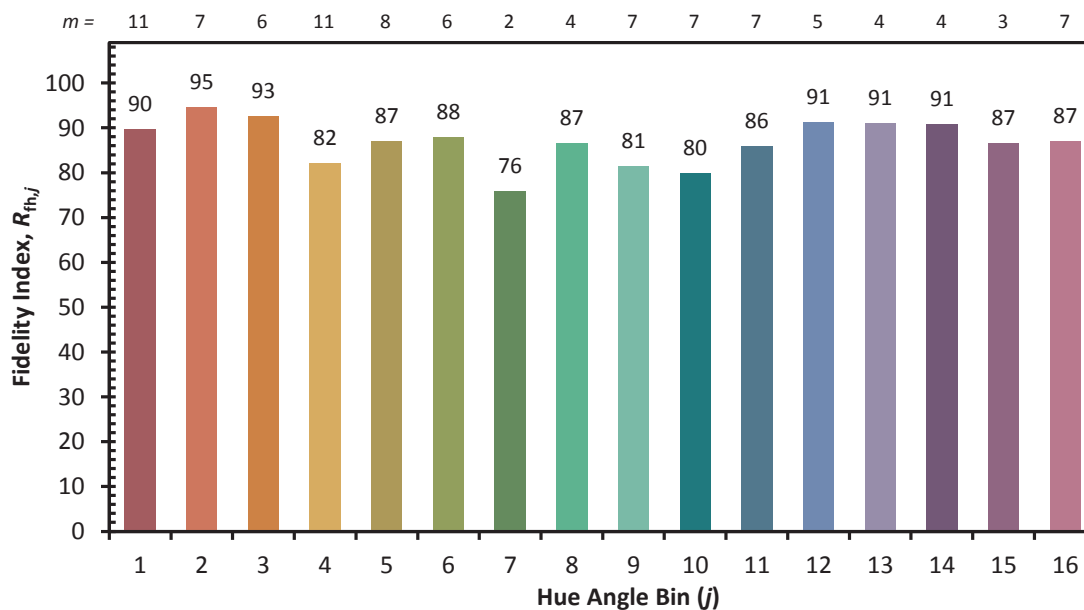
SB IESNA TM-30-15



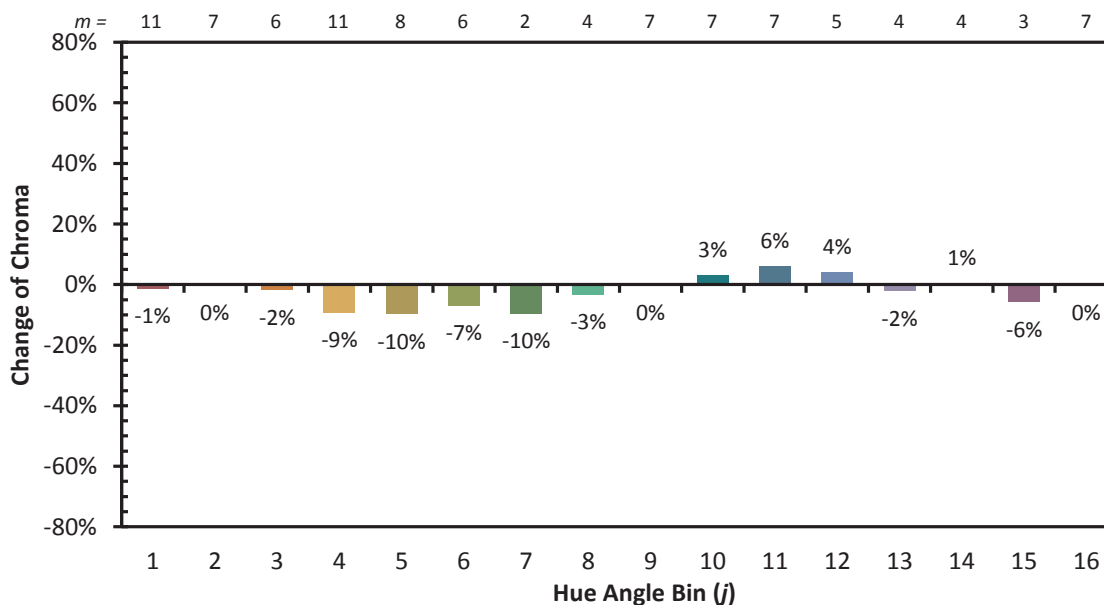
HUE BIN	FIDELITY INDEX	CHROMA % SHIFTS	HUE % SHIFTS
1	90	-1%	3%
2	95	0%	-1%
3	93	-2%	-3%
4	82	-9%	-7%
5	87	-10%	-1%
6	88	-7%	-2%
7	76	-10%	-10%
8	87	-3%	-7%
9	81	-0%	-11%
10	80	-3%	-12%
11	86	-6%	-7%
12	91	-4%	-2%
13	91	-2%	-5%
14	91	1%	-5%
15	87	-6%	3%
16	87	0%	-7%

SB IESNA TM-30-15

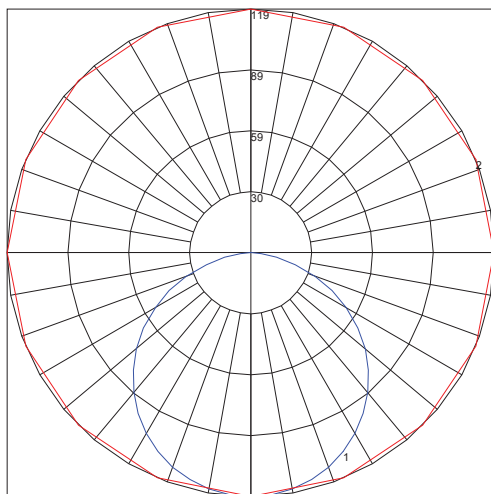
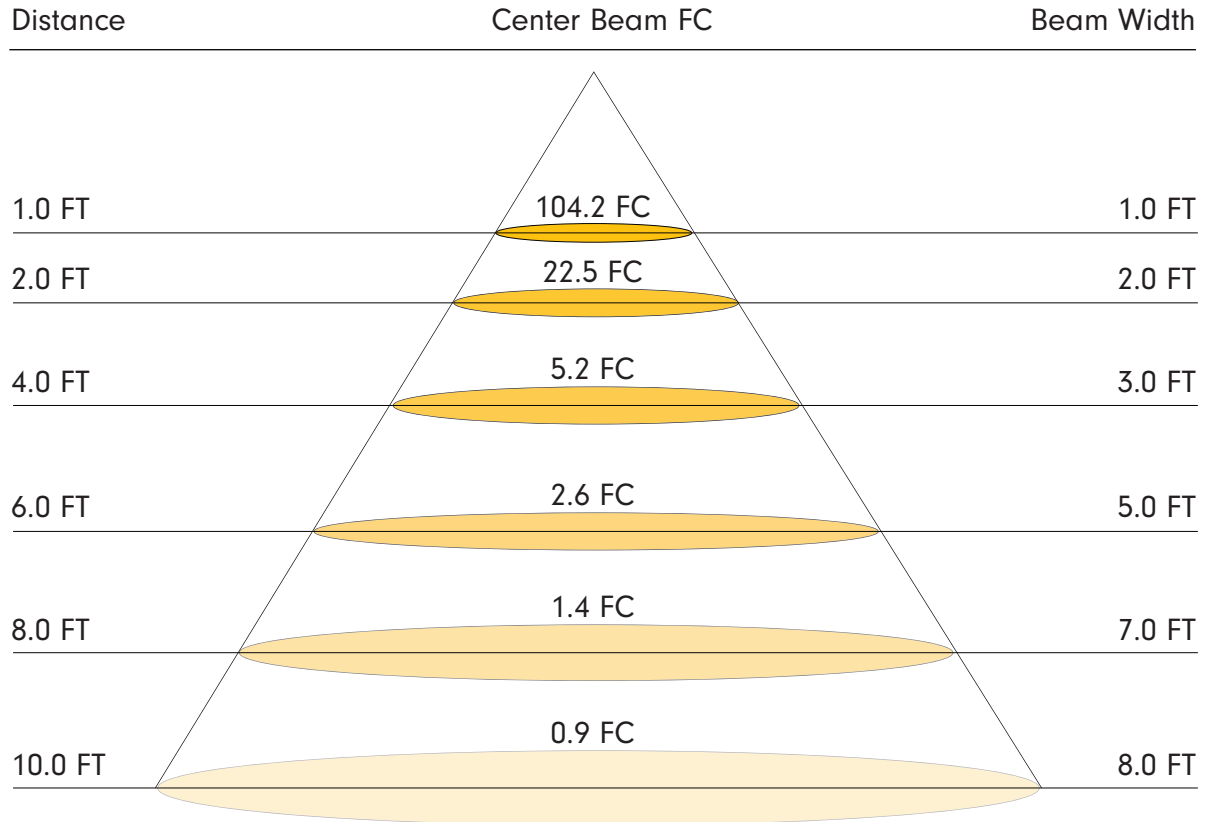
Hue Angle Bin vs. Fidelity Index



Hue Angle Bin vs. Change of Chroma



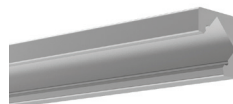
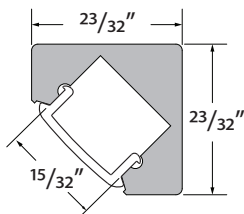
**SB Photometric Data (Based on 3000K / 1' strip)**



Maximum Candela = 118.58  
 Located At Horizontal Angle = 0  
 Vertical Angle = 0  
 #1 Vertical Plane Through Horizontal Angles (0-180) (Through Max. Cd.)  
 #2 Vertical Cone Through Vertical Angle (0) (Through Max. Cd.)

## Mounting Channel

### DYER



**DYER-CHAN-SLV-6.5**  
Anodized Aluminum Extrusion,  
available in 6.5' lengths



**DYER-LNS-OP-6.5**  
Lens, opal, length 6.5'



**DYER-EC-01**  
Solid End Cap

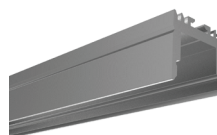
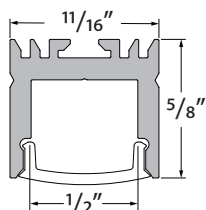
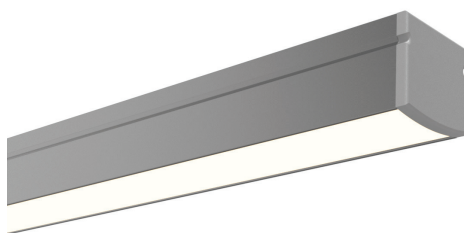


**DYER-EC-02**  
Power feed End Cap



**DYER-MTBK**  
Mounting Clip

### VALENCIA



**VALN-CHAN-SLV-6.5**  
Anodized Aluminum Extrusion,  
available in 6.5' lengths



**VALN-LNS-OP-6.5**  
Lens, opal, length 6.5'



**VALN-EC-01**  
Solid End Cap

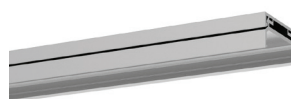
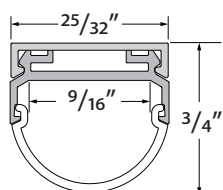
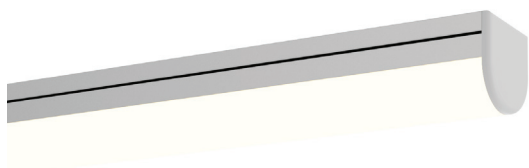


**VALN-EC-02**  
Power feed End Cap



**VALN-MTBK**  
Mounting Clip

### HORIZON



**HRIZ-CHAN-SLV-6.5**  
Anodized Aluminum Extrusion,  
available in 6.5' lengths



**HRIZ-LNS-OP-6.5**  
Lens, opal, length 6.5'



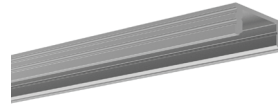
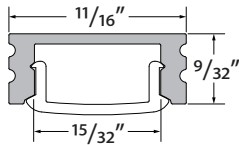
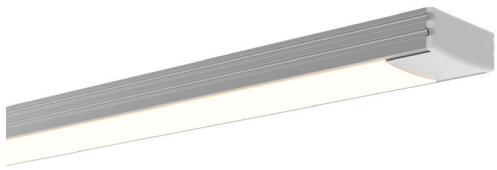
**HRIZ-EC-01**  
Solid End Cap



**HRIZ-EC-02**  
Power feed End Cap



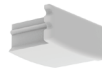
**MINI**



**MINI-CHAN-SLV-6.5**  
Anodized Aluminum Extrusion,  
available in 6.5' lengths



**MINI-LNS-OP-6.5**  
Lens, opal, length 6.5'



**MINI-EC-01**  
Solid End Cap



**MINI-EC-02**  
Power feed End Cap

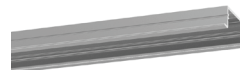
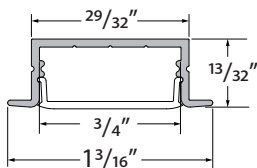


**MINI-MTBK**  
Mounting Clip



**MINI-ADJ-MTBK**  
Adjustable Mounting  
Clip

**WARNER**



**WRNR-CHAN-SLV-6.5**  
Anodized Aluminum Extrusion,  
available in 6.5' lengths



**WRNR-LNS-OP-6.5**  
Lens, opal, length 6.5'



**WRNR-EC-01**  
Solid End Cap

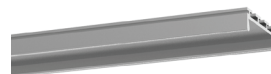
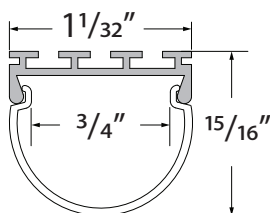


**WRNR-EC-02**  
Power feed End Cap



**WRNR-MTBK**  
Mounting Clip

**DOME**



**DOME-CHAN-SLV-6.5**  
Anodized Aluminum Extrusion,  
available in 6.5' lengths



**DOME-LNS-OP-6.5**  
Lens, opal, length 6.5'

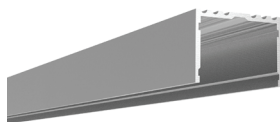
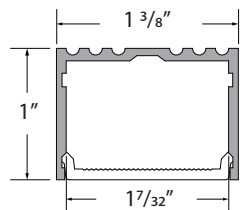
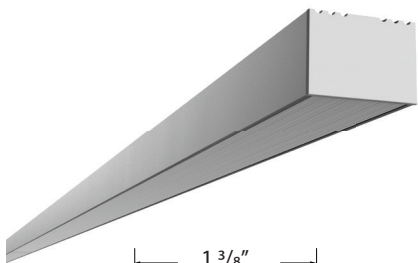


**DOME-EC-01**  
Solid End Cap



**DOME-EC-02**  
Power feed End Cap

**ALTON**



**ALTN-CHAN-SLV-6.5**  
Anodized Aluminum Extrusion,  
available in 6.5' lengths



**ALTN-LNS-OPL-6.5**  
Lens, opal, length 6.5'



**ALTN-LNS-CLR-6.5**  
Lens, clear, length 6.5'



**ALTN-LNS-DIF-6.5**  
Lens, diffuser, length 6.5'

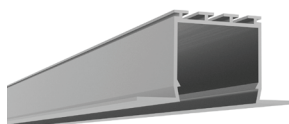
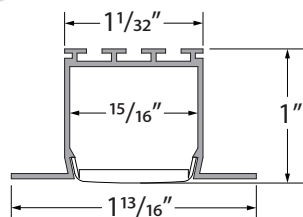
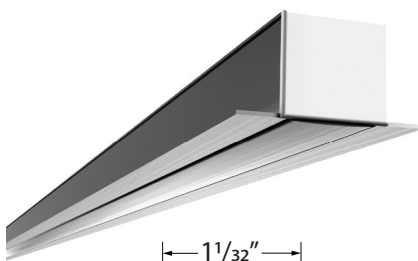


**ALTN-EC-01**  
Solid End Cap



**ALTN-EC-02**  
Powerfeed End Cap

**NOYES**



**NOYS-CHAN-SLV-6.5**  
Anodized Aluminum Extrusion,  
available in 6.5' lengths



**NOYS-LNS-OPL-6.5**  
Lens, opal, length 6.5'



**NOYS-LNS-CLR-6.5**  
Lens, clear, length 6.5'



**NOYS-LNS-DIF-6.5**  
Lens, diffuser, length 6.5'



**NOYS-EC-01**  
Solid End Cap

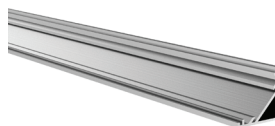
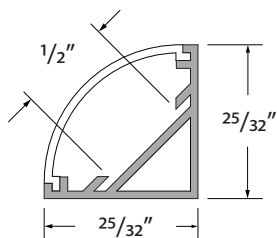
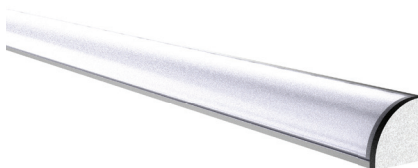


**NOYS-EC-02**  
Powerfeed End Cap



**NOYS-SPRING-CLP**  
Clip, Spring, Metal

**MARSALA**



**MRSL-CHAN-SLV-6.5**  
Anodized Aluminum Extrusion,  
available in 6.5' lengths



**MRSL-LNS-OPL-6.5**  
Lens, opal, length 6.5'



**MRSL-LNS-CLR-6.5**  
Lens, clear, length 6.5'



**MRSL-LNS-DIF-6.5**  
Lens, diffuser, length 6.5'



**MRSL-EC-01**  
Solid End Cap

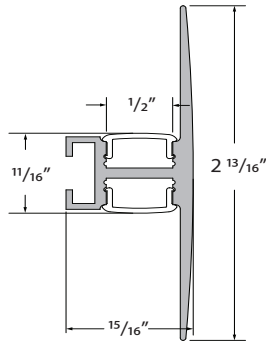


**MRSL-EC-02**  
Powerfeed End Cap



**MRSL-CLP-SLV**  
Clip, Metal

**DEWAR**



**DWAR-CHAN-SLV-6.5**  
Anodized Aluminum Extrusion,  
available in 6.5' lengths



**DWAR-LNS-OPL-6.5**  
Lens, opal, length 6.5'



**DWAR-LNS-CLR-6.5**  
Lens, clear, length 6.5'



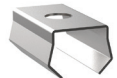
**DWAR-LNS-DIF-6.5**  
Lens, diffuser, length 6.5'



**DWAR-EC-01**  
Solid End Cap

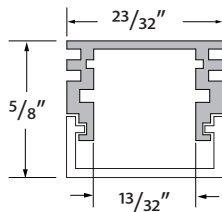
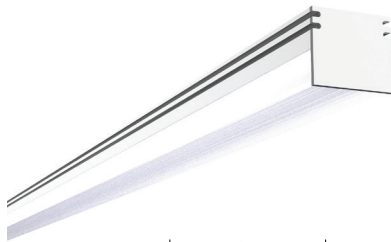


**DWAR-EC-02**  
Powerfeed End Cap



**DWAR-CLP-SLV**  
Clip, Metal

**ASTORIA**



**ASTR-CHAN-SLV-6.5**  
Anodized Aluminum Extrusion,  
available in 6.5' lengths



**ASTR-LNS-DIF-6.5**  
Lens, diffuser, length 6.5'



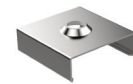
**ASTR-LNS-CLR-6.5**  
Lens, clear, length 6.5'



**ASTR-EC-01**  
Solid End Cap

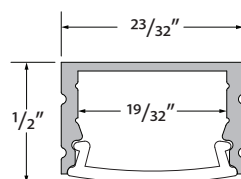
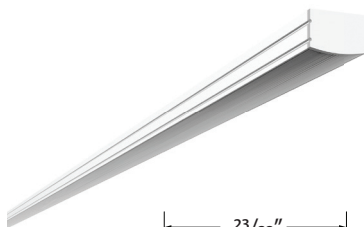


**ASTR-EC-02**  
Powerfeed End Cap



**ASTR-CLP-SLV**  
Clip, Metal

**MOFETT**



**MOFT-CHAN-SLV-6.5**  
Anodized Aluminum Extrusion,  
available in 6.5' lengths



**MOFT-LNS-OPL-6.5**  
Lens, opal, length 6.5'



**MOFT-LNS-CLR-6.5**  
Lens, clear, length 6.5'



**MOFT-LNS-DIF-6.5**  
Lens, diffuser, length 6.5'



**MOFT-EC-01**  
Solid End Cap

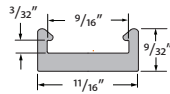


**MOFT-EC-02**  
Powerfeed End Cap



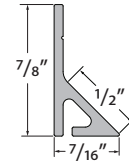
**MOFT-CLP-SLV**  
Clip, Metal

**M CHAN**



**MCHAN-8-LP**

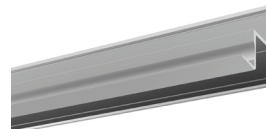
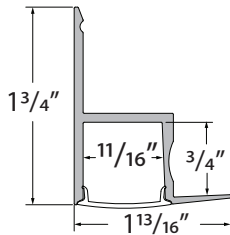
Low profile mounting channel, NO LENS OPTION clear polycarbonate, length 8'.



**TPL-I-45-MCH-8-S**

45° Mounting channel, NO LENS OPTION white PVC, length 8'.

**EDGE**



**EDGE-CHAN-SLV-6.5**

Anodized Aluminum Extrusion, available in 6.5' lengths



**EDGE-LNS-OP-6.5**

Lens, opal, length 6.5'



**EDGE-EC-01**

Solid End Cap



**EDGE-EC-02**

Powerfeed End Cap



## Recommended Power Supplies

### ADUL - NON DIMMING

DESCRIPTION	CAT NO	APPLICATION	PRIMARY VOLTAGE	SECONDARY VOLTAGE	CIRCUIT BREAKERS	MAX LOAD	CIRCUIT CAPACITY
ADUL Series Class 2 Transformer	ADUL-120-1-4-24-D	Indoor / Damp	100-277V AC 5ø60 HZ	24V DC	1	96W	4A
	ADUL-240-2-4-24-D				2	2x96W	2x4A
	ADUL-320-3-4-24-D				3	3x96W	3x4A

### ADUL - 0-10V DIMMING

DESCRIPTION	CAT NO	APPLICATION	PRIMARY VOLTAGE	SECONDARY VOLTAGE	CIRCUIT BREAKERS	MAX LOAD	CIRCUIT CAPACITY
ADUL Series Class 2 Transformer	ADUL-120-1-4-24-DOT	Indoor / Damp	100-277V AC 5ø60 HZ	24V DC	1	96W	4A
	ADUL-240-2-4-24-DOT				2	2x96W	2x4A
	ADUL-320-3-4-24-DOT				3	3x96W	3x4A

### ADUL - DMX SINGLE ADDRESS

DESCRIPTION	CAT NO	APPLICATION	PRIMARY VOLTAGE	SECONDARY VOLTAGE	CIRCUIT BREAKERS	MAX LOAD	CIRCUIT CAPACITY
ADUL Series Class 2 Transformer	ADUL-120-1-4-24-DIN	Indoor / Damp	100-277V AC 5ø60 Hz	24V DC	1	96W	4A
	ADUL-240-2-4-24-DIN				2	2x96W	2x4A
	ADUL-320-3-4-24-DIN				3	3x96W	3x4A

### ADUL - DMX MULTI ADDRESS

DESCRIPTION	CAT NO	APPLICATION	PRIMARY VOLTAGE	SECONDARY VOLTAGE	CIRCUIT BREAKERS	MAX LOAD	CIRCUIT CAPACITY
ADUL Series Class 2 Transformer	ADUL-240-2-4-24-DIN-2	Indoor / Damp	100-277V AC 5ø60 Hz	24V DC	2	2x96W	2x4A
	ADUL-320-3-4-24-DIN-3				3	3x96W	3x4A

### ADNM - DMX/DALI FLICKER-FREE FOR TV STUDIO

DESCRIPTION	CAT NO	APPLICATION	PRIMARY VOLTAGE	SECONDARY VOLTAGE	CIRCUIT BREAKERS	MAX LOAD	CIRCUIT CAPACITY
ADNM Series Class 2 Transformer	ADNM-120-1-4-24-DTV	Indoor / Outdoor	100-277V AC 5ø60 Hz	24V DC	1	1x96W	1x4A
	ADNM-240-2-4-24-DTV				2	2x96W	2x4A
	ADNM-320-3-4-24-DTV				3	3x96W	3x4A

### ER - JA8 w/ELITE 3000K

DESCRIPTION	CAT NO	APPLICATION	PRIMARY VOLTAGE	SECONDARY VOLTAGE	CIRCUIT BREAKERS	MAX LOAD	CIRCUIT CAPACITY
ER Series Class 2 Driver	ER-80-1-3-3-24-D	Indoor/ Outdoor	120-277V AC	24V DC	1	80W	3.3A
ER Series Class 2 0-10V Dimming	ERG-80-24-DIM1-10						



## Recommended Power Supplies

### INFINITY - MLV / ELV / 0-10V / PWM / TRIAC

DESCRIPTION	CAT NO	APPLICATION	PRIMARY VOLTAGE	SECONDARY VOLTAGE	CIRCUIT BREAKERS	MAX LOAD	MIN LOAD	CIRCUIT CAPACITY
Infinity Series Class 2 Transformer	INF-J-30-1-1.3-24	Indoor / Outdoor	100 - 277V AC	24VDC	1	30W	3W	1.3A
	INF-J-60-1-2.5-24				1	60W	6W	2.5A
	INF-J-96-1-4-24				1	96W	9W	4A
	INF-J-192-2-4-24				2	2x96W	2x9W	2x4A
	INF-J-288-3-4-24				3	3x96W	3X9W	3x4A

## Recommended Dimmers

### DIMMING - 0-10V

DESCRIPTION	CAT NO	APPLICATION	INPUT VOLTAGE	OUTPUT VOLTAGE	MAX LOAD
0-10V Dimmer	DIM-LD-010	Indoor	12V/24V DC	12V/24V DC	30 mA max. output (sink only)

### DIMMING - MLV

DESCRIPTION	CAT NO	APPLICATION	INPUT VOLTAGE	OUTPUT VOLTAGE	MAX LOAD
MLV Dimmer	N-600	Indoor	120V AC	120V AC	450W
	N-1000				800W
	N-1500				1200W
	D-600				450W
	M-600				450W
	M-1000				800W

### DIMMING - ELV

DESCRIPTION	CAT NO	APPLICATION	INPUT VOLTAGE	OUTPUT VOLTAGE	MAX LOAD
ELV Dimmer	ME-600	Indoor	120V AC	120V AC	450W
	DE-300				300W

## Recommended Dimmers

### DIMMING - DMX

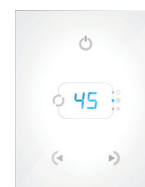
DESCRIPTION	CAT NO	APPLICATION	INPUT VOLTAGE	OUTPUT PROTOCOL	MAX UNIVERSE
DMX Controller	TVOQ-1-WH	Indoor	5V DC	DMX 512	1
	TVOQ-2-BK		6V DC		
	TVOQ-2-WH				
	TVOQ-10-BK-7		6-7V DC		
	TVOQ-10-WH-7				2



**TVOQ-1-WH**  
WH (White only)



**TVOQ-10-XX-7**  
XX = BK (Black), WH (White)



**TVOQ-2-XX**  
XX = BK (Black), WH (White)