

CAT:	FEET:
TYPE:	PROJECT:

Illumiline™ HO (high output) is engineered for outdoor or indoor use in architectural elements such as walkways, bridge structures, hand rails, stanchions, and outdoor cove applications. Illumiline™ HO is designed for low maintenance and features low options of square or dome clear and lightly frosted rigid polycarbonate housings. Illumiline™ HO incorporates high grade 2216 SMD LEDs mounted to a white FP4 PCB which produces up to 195 Lumens/ft of even, consistent low voltage linear illumination.

Features

- 2216 SMD LEDs (0.83" O.C.)
- 4 x White CCTs (2700K – 6000K)
- High lumen output 195 Lumens/ft
- Clear or lightly frosted
- IP66 (Indoor/Outdoor)

Mounting

Use mounting channel or mounting clips (1 per foot).

Application

For architectural elements such as walkways, bridge structures, wall wash, hand rail and outdoor cove applications.

1010 Profile: Rectangular (19/32" x 17/32") tubing available in lightly frosted polycarbonate.

Technical Information



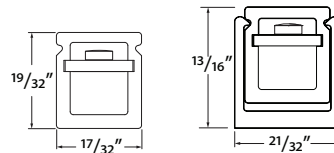
LED Spacing O.C.	0.83"
Lumens/ft	195
Watts/ft	5.5
Lumens/watt	35
CRI	>80/TYP82
Kelvin Temp	2700K(+/-100K), 3000K (+/- 100K), 4000K (+/- 150K), 6000K (+/-150K)
Rated Life	50,000 hrs.
Max Run Length	12'
Operating Voltage	24V DC
Power Supply	Class 2
Dimmable	Yes

Manufactured in 11" tube, 12 LEDs @ 0.83"/OCS.

Warranty

3 years

Profile Dimensions

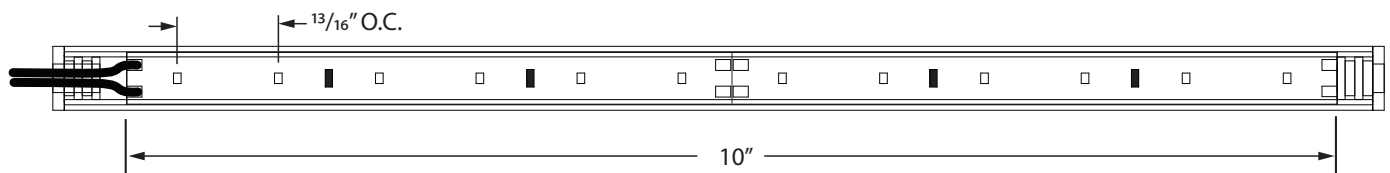


Fixture Length	Number of LEDs
11"	12
16"	18
21"	24
26"	30
31"	36
36"	42
41"	48

Fixture Length	Number of LEDs
46"	54
51"	60
56"	66
61"	72
66"	78
71"	84
76"	90

Fixture Length	Number of LEDs
81"	96
86"	102
91"	108
96"	114
101"	120
106"	126
111"	132

Fixture Length	Number of LEDs
116"	138
121"	144
126"	150
131"	156
136"	162
141"	168



Notes: PCB Board Length: 10" - Left and Right end Cap takes up 1" = 11" TOTAL TUBE LENGTH

Ordering Information

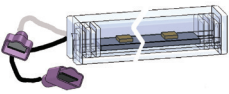
A light tube guide or drawing must accompany each order showing each tube length.

PRODUCT CODE	PROFILE	LED COLOR	LED PCB SPACING	VOLTAGE
ILTHO ILTHO = Illumiline HO	1010 = Rectangular	27 = 2700K 30 = 3000K 40 = 4000K 60 = 6000K	01 01 = 1" NOM (.83")	24 24 = 24V DC

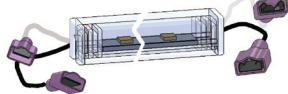
Note:
Wiring end preps must be ordered for indoor or outdoor application use.

Wiring Accessories - Indoor End Preps

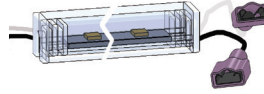
Note: Wiring end preps must be ordered for indoor or outdoor application use.



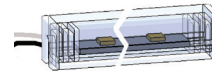
ILT-10-EP-1-LED
 END PREP FOR 1010
 3" black and white 18AWG wire connector lead with male spade connectors on the leading end and dead end on the trailing end.
 Polarity: white: +, black: -



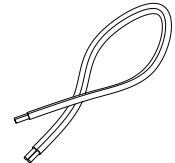
ILT-10-EP-2-LED
 END PREP FOR 1010
 3" black and white 18AWG wire connector lead with male spade connectors on leading end and female spade connectors on the trailing end.
 Polarity: white: +, black: -



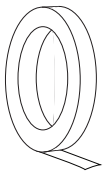
ILT-10-EP-3-LED
 END PREP FOR 1010
 24" black and white 18AWG lead wires on leading end, 3" black and white 18GA wire connector lead with female spade connectors on trailing end. Polarity: white: +, black: -



ILT-10-EP-4-LED
 END PREP FOR 1010
 24" black and white 18AWG lead wires on leading end, dead end on the trailing end.
 Polarity: white: +, black: -



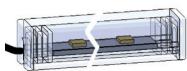
ILT-XEP-18-BW
 Extra length 18AWG black and white lead wire (per foot) to extend any wire lead lengths



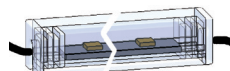
DBL-TP
 Tubing double sided tape
 1/4" W X 180'

Wiring Accessories - Outdoor End Preps

Note: Wiring end preps must be ordered for indoor or outdoor application use.



ILT-10-EP-C-LED
 END PREP FOR 1010
 24" 18AWG black outdoor cable wire on leading end and a dead end on the trailing end

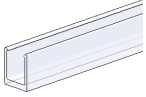


ILT-10-EP-D-LED
 END PREP FOR 1010
 24" 18AWG black outdoor cable wire lead on both ends

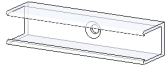


ILT-XEP-18-BK
 Extra length 18AWG black outdoor cable wire (per foot) to extend any wire lead lengths

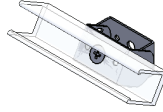
Mounting Accessories



MCHAN-8
Mounting channel 8'
length clear polycarbonate
Fits Illumiline HO 1010
profile only



ILT-MCL
Mounting clip 3" clear
polycarbonate (1 per ft) for
slight arch applications Fits
Illumiline HO 1010 profile only



ILT-ADJ-MOUNT
Directional mounting bracket
with +/-45° angle adjustment
Fits Illumiline HO 1010 profile
only

Recommended Power Supplies

ADUL - NON DIMMING

DESCRIPTION	CAT NO	APPLICATION	PRIMARY VOLTAGE	SECONDARY VOLTAGE	CIRCUIT BREAKERS	MAX LOAD	CIRCUIT CAPACITY
ADUL Series Class 2 Transformer	ADUL-120-1-4-24-D	Indoor / Damp	100-277V AC 50/60 HZ	24V DC	1	96W	4A
	ADUL-240-2-4-24-D				2	2x96W	2x4A
	ADUL-320-3-4-24-D				3	3x96W	3x4A

ADUL - 0-10V DIMMING

DESCRIPTION	CAT NO	APPLICATION	PRIMARY VOLTAGE	SECONDARY VOLTAGE	CIRCUIT BREAKERS	MAX LOAD	CIRCUIT CAPACITY
ADUL Series Class 2 Transformer	ADUL-120-1-4-24-DOT	Indoor / Damp	100-277V AC 50/60 HZ	24V DC	1	96W	4A
	ADUL-240-2-4-24-DOT				2	2x96W	2x4A
	ADUL-320-3-4-24-DOT				3	3x96W	3x4A

ADUL - DMX SINGLE ADDRESS

DESCRIPTION	CAT NO	APPLICATION	PRIMARY VOLTAGE	SECONDARY VOLTAGE	CIRCUIT BREAKERS	MAX LOAD	CIRCUIT CAPACITY
ADUL Series Class 2 Transformer	ADUL-120-1-4-24-DIN	Indoor / Damp	100-277V AC 50/60 HZ	24V DC	1	96W	4A
	ADUL-240-2-4-24-DIN				2	2x96W	2x4A
	ADUL-320-3-4-24-DIN				3	3x96W	3x4A

ADUL - DMX MULTI ADDRESS

DESCRIPTION	CAT NO	APPLICATION	PRIMARY VOLTAGE	SECONDARY VOLTAGE	CIRCUIT BREAKERS	MAX LOAD	CIRCUIT CAPACITY
ADUL Series Class 2 Transformer	ADUL-240-2-4-24-DIN-2	Indoor / Damp	100-277V AC 50/60 Hz	24V DC	2	2x96W	2x4A
	ADUL-320-3-4-24-DIN-3				3	3x96W	3x4A

ADNM - 0-10V DIMMING

DESCRIPTION	CAT NO	APPLICATION	PRIMARY VOLTAGE	SECONDARY VOLTAGE	CIRCUIT BREAKERS	MAX LOAD	CIRCUIT CAPACITY
ADNM Series Class 2 Transformer	ADNM-90-1-4-24-D	Indoor / Outdoor	100-277V AC 50/60 HZ	24V DC	1	90W	3.75A
	ADNM-120-1-4-24-D				1	96W	4A
	ADNM-240-2-4-24-D				2	2x96W	2x4A
	ADNM-320-3-4-24-D				3	3x96W	3x4A

ADNM - DMX SINGLE ADDRESS

DESCRIPTION	CAT NO	APPLICATION	PRIMARY VOLTAGE	SECONDARY VOLTAGE	CIRCUIT BREAKERS	MAX LOAD	CIRCUIT CAPACITY
ADNM Series Class 2 Transformer	ADNM-90-1-4-24-DIN	Indoor / Outdoor	100-277V AC 50/60 Hz	24V DC	1	90W	3.75A
	ADNM-120-1-4-24-DIN				1	96W	4A
	ADNM-240-2-4-24-DIN				2	2x96W	2x4A
	ADNM-320-3-4-24-DIN				3	3x96W	3x4A

ADNM - DMX MULTI ADDRESS

DESCRIPTION	CAT NO	APPLICATION	PRIMARY VOLTAGE	SECONDARY VOLTAGE	CIRCUIT BREAKERS	MAX LOAD	CIRCUIT CAPACITY
ADNM Series Class 2 Transformer	ADNM-240-2-4-24-DIN-2	Indoor / Outdoor	100-277V AC 50/60 Hz	24V DC	2	2x96W	2x4A
	ADNM-320-3-4-24-DIN-3				3	3x96W	3x4A

Recommended Power Supplies

INFINITY - MLV / ELV / 0-10V / PWM / TRIAC

DESCRIPTION	CAT NO	APPLICATION	PRIMARY VOLTAGE	SECONDARY VOLTAGE	CIRCUIT BREAKERS	MAX LOAD	MIN LOAD	CIRCUIT CAPACITY
Infinity Series Class 2 Transformer	INF-J-30-1-1.3-24	Indoor / Outdoor	100 - 277V AC	24V DC	1	30W	3W	1.3A
	INF-J-60-1-2.5-24				1	60W	6W	2.5A
	INF-J-96-1-4-24				1	96W	9W	4A
	INF-J-192-2-4-24				2	2x96W	2x9W	2x4A
	INF-J-288-3-4-24				3	3x96W	3X9W	3x4A

Recommended Dimmers

DIMMING - 0-10V

DESCRIPTION	CAT NO	APPLICATION	INPUT VOLTAGE	OUTPUT VOLTAGE	MAX LOAD
0-10V Dimmer	DIM-LD-010	Indoor	12V/24V DC	12V/24V DC	30 mA max. output (sink only)

DIMMING - MLV

DESCRIPTION	CAT NO	APPLICATION	INPUT VOLTAGE	OUTPUT VOLTAGE	MAX LOAD
MLV Dimmer	N-600	Indoor	120V AC	120V AC	450W
	N-1000				800W
	N-1500				1200W
	D-600				450W
	M-600				450W
	M-1000				800W

DIMMING - ELV

DESCRIPTION	CAT NO	APPLICATION	INPUT VOLTAGE	OUTPUT VOLTAGE	MAX LOAD
ELV Dimmer	ME-600	Indoor	120V AC	120V AC	450W
	DE-300				300W

Recommended Dimmers

DIMMING - DMX

DESCRIPTION	CAT NO	APPLICATION	INPUT VOLTAGE	OUTPUT PROTOCOL	MAX UNIVERSE
DMX Controller	TVOQ-1-WH	Indoor	5V DC	DMX 512	1
	TVOQ-2-BK		6V DC		
	TVOQ-2-WH				
	TVOQ-10-BK-7		6-7V DC		2
	TVOQ-10-WH-7				