

VHB3 LED HIGH BAY



*Shown with optional wall wash

True glare free



The VHB3 is the most efficient glare free fixture in the lighting industry. We accomplish this with our patented Coined Optic technology for unmatched visual comfort.

PRODUCT SPECIFICATIONS

CRI
80+

Color Temperatures
35K, 40K, 50K

Ambient Operating Temp
Min -20°c, Max 55°c

Housing
5052-H32 Aluminum
Painted after fab (PAF)

Finish (Standard Silver)
Powder Coat, Silver, White, Black, Blue

Certification UL Listed, CUL Listed,
DLC Premium Listed (L1.5 DLC Pending),
IK10 Rated

Rated >72,000+ hours at 70%
Lumen Maintenance (L70)

Integrated Wire Guard Design
(Standard)

Reflector
90° VE Patented ZeroGlare™ Coined Optic

LED Module
Samsung mid power LED

Driver*
Sensor Ready, 0-10V dimming,
flicker-free from 10 to 100%.
voltage 110~277 Vac, 50/60Hz.
Short Circuit, Over Temperature, Over Voltage
protection.
Surge Transient Protection +6 kV
(Optional 347V Philips Xitanium Driver available)

Emergency Driver Back-up*
90min Emergency Driver, Fulham FHS2-UNV-56S

Mounting (Surface Standard & stem provided by others)
Cable Mount, Surface mount to Jbox (standard),
Rigid Stem Ready, Hook/Chain compatible
(provided by others)

Corrected UGR (Unified Glare Rating)
L1- 19.4, L1.5- 13.9, L2- 19.5, L3- 19.4, L4- 18.1

Tunable White (available only on L2 & L4 models)
Tunable white 35K to 50K with Avi-on Controls

Wall Wash
10°, 20° One or both outer bars available

Up Light
Optional up light available (Not available on L1 model)

Power Cord/Whip (No Whip is Standard)
3ft, 6ft, 10ft 5 conductor waterproof, 18 GA, 600V (120~277V)

Approved For
Damp Locations

Made in U.S.A.

Warranty
5-year limited warranty.
Complete warranty terms located at: www.visionengineering.com

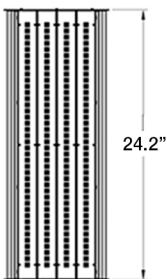
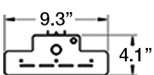
Notes
1. Actual performance may differ as a result of end-user environment
and application. 2. Visit www.visionengineering.com for the most up
to date specs and additional information.

*Drivers and Emergency Battery have been tested up to 50' for remote
mounting application



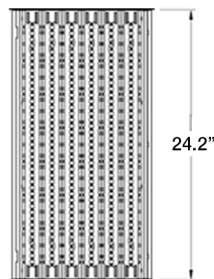
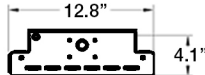
TECHNICAL DRAWINGS

VHB3-L1



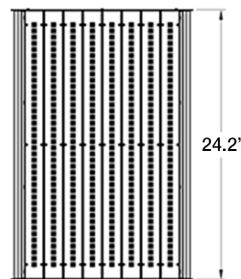
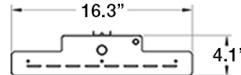
Length 24.2"
Width 9.3"
Height 4.1"
Weight 6lbs. (2.7kg)

VHB3-L1.5



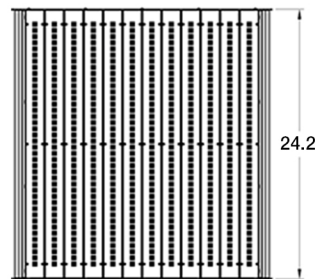
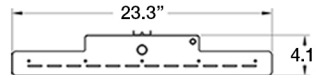
Length 24.2"
Width 12.8"
Height 4.1"
Weight 8lbs. (3.6kg)

VHB3-L2



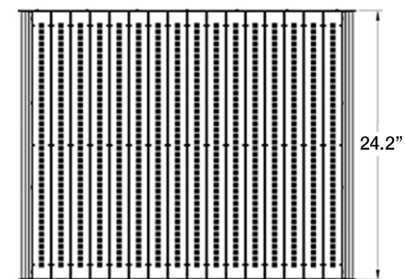
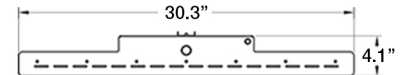
Length 24.2"
Width 16.3"
Height 4.1"
Weight 10lbs. (4.5kg)

VHB3-L3



Length 24.2"
Width 23.3"
Height 4.1"
Weight 14lbs. (6.3kg)

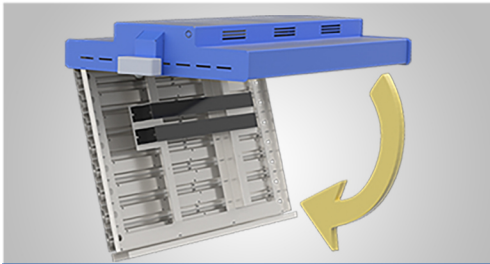
VHB3-L4



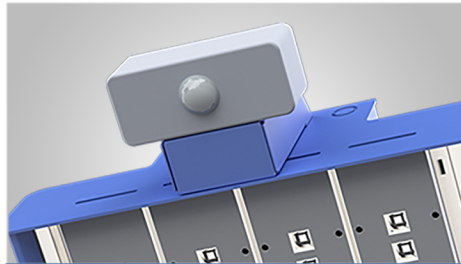
Length 24.2"
Width 30.3"
Height 4.1"
Weight 18lbs. (8.1kg)

V 8/5/22

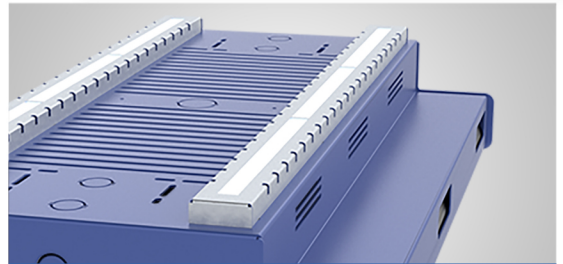
VHB3 LED HIGH BAY



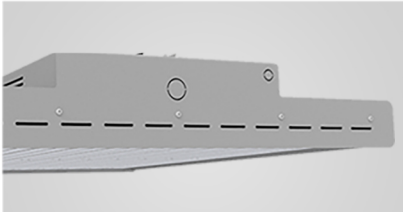
Future-proof
VHB3 enables quick and easy upgrades or service with no tools.



Optional in fixture 0-10v lighting control
Provides continuous dimming control to conserve energy, simplify maintenance, and personalize the lighting environment.



Optional Up Light
Create light on the ceiling to eliminate that "cave feel".



Silver Powdercoat (Standard)

Tunable White with Bluetooth Mesh.

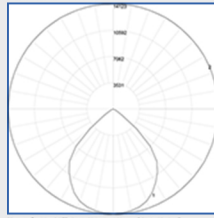
Simple Bluetooth® Controls



Optional Wall wash bars come in 10° & 20°

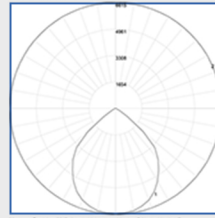
PHOTOMETRICS

VHB3-L2-90D-50K
Polar Candela Distribution



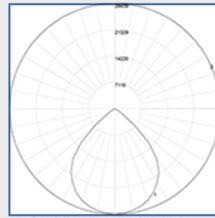
Maximum Candela: 11420; Luminous Flux: 13140 lm; Beam Spread: 90°; Vertical Angle: 1.8°; Horizontal Angle: 90°; Through Hole: 1.5" (38.1mm); Through Hole: 1.5" (38.1mm); Through Hole: 1.5" (38.1mm)

VHB3-L1-90D-35K
Polar Candela Distribution



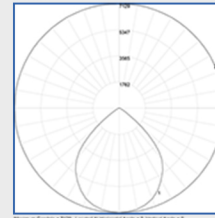
Maximum Candela: 8850; Luminous Flux: 10263 lm; Beam Spread: 90°; Vertical Angle: 1.8°; Horizontal Angle: 90°; Through Hole: 1.5" (38.1mm); Through Hole: 1.5" (38.1mm); Through Hole: 1.5" (38.1mm)

VHB3-L4-90D-50K
Polar Candela Distribution



Maximum Candela: 11420; Luminous Flux: 13140 lm; Beam Spread: 90°; Vertical Angle: 1.8°; Horizontal Angle: 90°; Through Hole: 1.5" (38.1mm); Through Hole: 1.5" (38.1mm); Through Hole: 1.5" (38.1mm)

VHB3-L1-90D-50K
Polar Candela Distribution



Maximum Candela: 11420; Luminous Flux: 13140 lm; Beam Spread: 90°; Vertical Angle: 1.8°; Horizontal Angle: 90°; Through Hole: 1.5" (38.1mm); Through Hole: 1.5" (38.1mm); Through Hole: 1.5" (38.1mm)

ORDERING

Project: Comments:

Date:

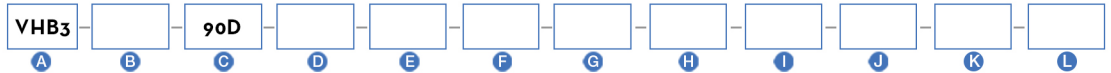
Type:

***VHB3 High Bay Lumens Per Watt**

Lumens Package	L1	L1.5	L2	L3	L4
Lumens Output	13140	16263	26100	38610	50410
Wattage	90W	130W	180W	270W	355W
Efficacy (LPW)	146	125	145	143	142

*Actual lumens output may vary +/- 4%. Tested @ 5000K.

Ordering Information



Example: VHB3-L1-90D-40K-SL-ST-ED-MS-UPL35-201-TW50-6WP

- A SERIES**
VHB3
- B *LUMENS PACKAGE**
 - L1 13140
 - L1.5 16263
 - L2 26100
 - L3 38610
 - L4 50410
- C OPTICS**
90D 90°
- D CCT**
 - 35K 3500K
 - 40K 4000K
 - 50K 5000K
- E COLOR**
 - SL Silver Standard
 - WH White
 - BL Black
 - SB Swiss Blue (adder)
- F DRIVERS (120-277v Driver is Standard)**
 - ST 120-277V Driver
 - HV 347v-480v Driver

- G EMERGENCY DRIVER**
 - ED Emergency Driver
 - N/A No Emergency Driver
- H SENSORS**
 - MS Daylight Harvest/Motion Sensor
 - OC Occupancy Sensor
 - NS Node Sensor
 - N/A No Sensor
- I UPLIGHT (available only on L2, L3 & L4 models)**
(Uplight = 2,000 Lumens of Uplight Only/ adds 17 watts)
 - UPL35 3500K
 - UPL40 4000K
 - UPL50 5000K
 - N/A No Uplight
- J WALL WASH**
 - 201 One 20° Wall Wash Light Bar
 - 202 Two 20° Wall Wash Light Bars
 - N/A No Wall Wash

- K TUNABLE WHITE (available only on L2 & L4 lumen packages)**
 - TW50 Tunable white 35K to 50K (with Avi-on Controls)
 - N/A No Tunable White
- L WIRE WHIP**
 - 6WP 5 Wire - 6' Whip (Standard)
 - 10WP 5 Wire - 10' Whip (Requires an adder)

ACCESSORIES

- MOUNTING KITS**
CM Cable Mount Kit
- EXTERNAL WIRE GUARD**
EWG External Wire Guard (Integrated Wire Guard Design Standard)
- 6 WIRE WHIP + 5 WIRE WHIP**
XW (1) 6 Wire whip & (1) 5 Wire whip (Required for powering 4 drivers separately)