

Date

Project

Type

Comments

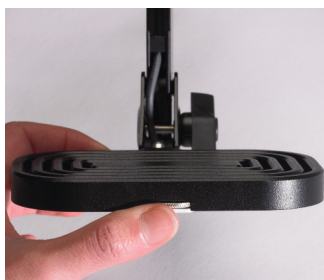
## DESCRIPTION

The Reach *by Finelite* is an ENERGY STAR® qualified LED desk lamp. Deliver up to 49 lumens per watt, full range QuickTouch™ dimming, and a field-replaceable LED module, the Reach delivers breakthrough performance backed by LM-79 testing, LM-80 data, and a 5-year, worry-free warranty.



## REPLACEABLE LED MODULE:

LED modules are easily replaced. State of the art high performance LED array. Contact factory for current specification



## FULL RANGE QUICKTOUCH™ DIMMING:

Dims to 5% of light output. Designed without a hard stop for durability.

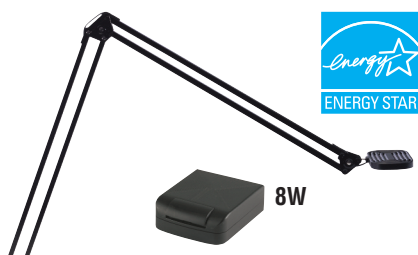
## VIPER

## VELO



## LUMINAIRE STYLE OPTIONS:

Reach comes in two unique head designs. Velo and Viper. Both feature the same optical performance.

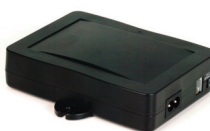


## ENERGY STAR® QUALIFIED:

The Reach 12" and 18" desk lamp is only ENERGY STAR® qualified with the 8W power supply.



## 21W & 60W

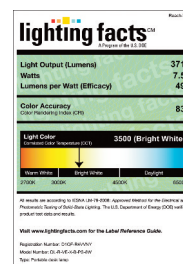


## 8W



## POWER SUPPLY:

The power supply draws no power during off-state. Available with 8W, 21W or 60W power supplies to meet a variety of application needs.



## LIGHTING FACTS LABEL:

Finelite is a manufacturer partner of the DOE's SSL Quality Advocates program.

## ORDERING GUIDE

Sample Number: DL-R - VE - 12" - B - PS-8W - ES \*

Lamp (DL-R)

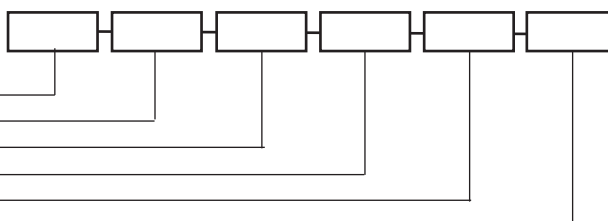
Head Design (VE - Velo, VI - Viper)

Arm Length (12", 18")

Finish (Black standard)

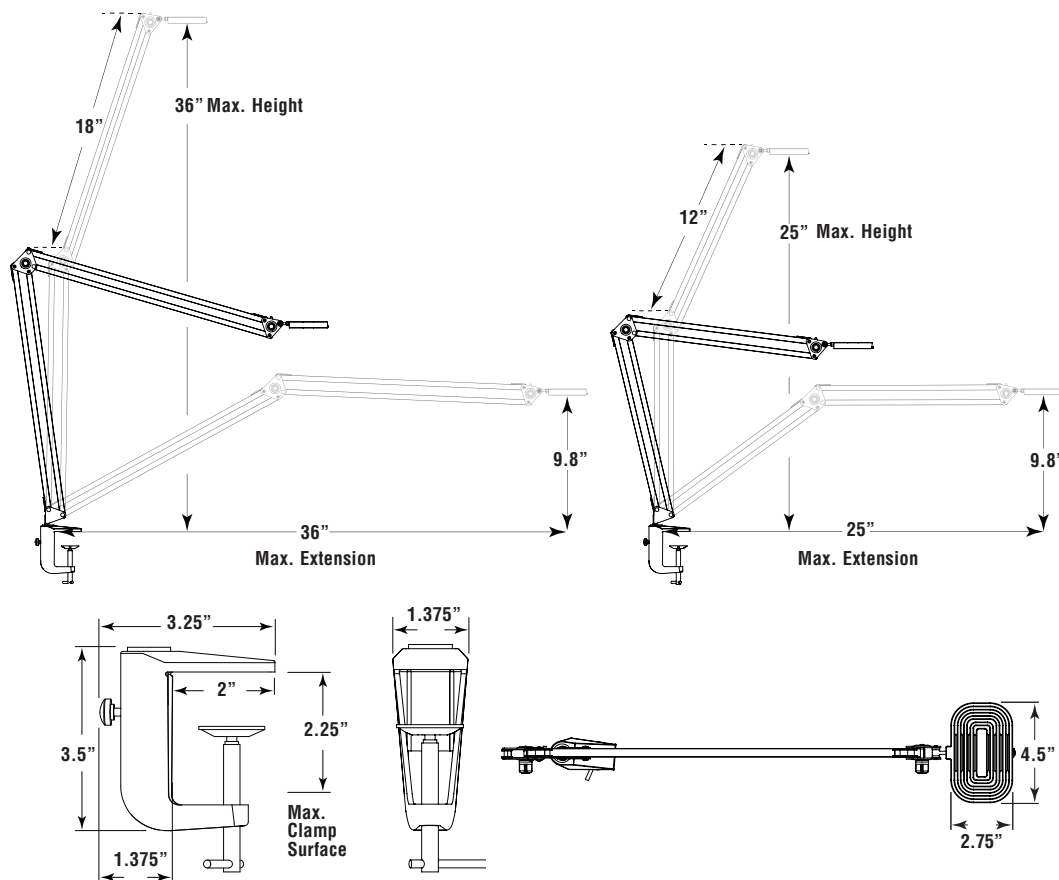
Power Supply (PS-8W, PS-21W, PS-60W)

ENERGY STAR (ES\*)



\* ENERGY STAR® compliant version requires 8w Power supply (PS8W).

## DIMENSIONAL DRAWINGS



5 year warranty on all Reach *by Finelite* components.

## TECHNICAL SPECIFICATIONS

- ENERGY STAR® qualified with 8W power supply
- Buy American Act of 2009 Compliant
- Field-replaceable LED module
- Efficacy (Lumens per Watt): Velo: 49.5 / Viper: 47.9
- Light Output (Lumens): Velo: 371 / Viper: 359
- Color Temperature: 3500k
- Color Rendering (CRI): Velo: 83 / Viper: 82
- $L_{70}$ : Rated for 100,000 hours to 70% of initial lumens\*
- Max Case Temperature: ( $T_C$ ): Velo: 55.7°C / 61.3°C
- Power Consumption: 8W max
- State of the art high performance LED array. Contact factory for current specification.
- QuickTouch™ dimming to 5% of full light output
- LM-79 tested and LM-80 data is available
- Complies with FCC requirements for commercial and residential use
- Compatible with Personal Lighting System (PLS)
- End of life statement: Curve is 96% recyclable at the end of its useful life
- RoHS compliant



\*  $L_{70}$  lifetime is estimated by the LED manufacturer based on independent testing of the Curve luminaire.

## 8W POWER SUPPLY

- Consumes no power in off-state
- Input Voltage 100-240v VAC 50-60hz (input wattage to 8W max.)
- Output Voltage: 24 VDC (output wattage to 6.5W max.)
- Output Jack: 1 x 2.5 mm
- Dimensions: 3.5" x 4.3" x 1.4"
- Finish: Matte Black
- ETL Listed
- Supplied with 5' AC power cord



## MOUNTING OPTIONS

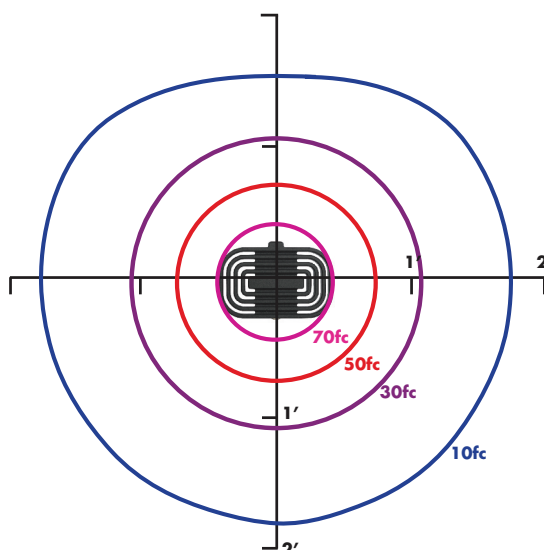


### DESK CLAMP

The desk clamp is standard on reach and secures to desks up to 2.25" thick.

## PHOTOMETRIC PERFORMANCE

Forward throw beam comfortably illuminates the entire task area with a single desk lamp.



Lamp head is 16" above desk surface at full light output. Download LM-79 test report at [www.finelite.com](http://www.finelite.com).