

Date

Project

Type

Comments

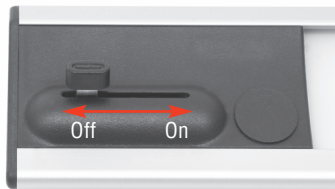
DESCRIPTION

Edge by Finelite™ delivers the right amount of task illumination for a fraction of the energy required by conventional undercabinet luminaires. Available in three different sizes, Edge by Finelite™ can be used as a stand alone unit, daisy chained or in conjunction with Finelite LED desk lamps. Use it to create pleasant and sustainable work areas that allow for true occupant control.



LIGHT ENGINE

Edge uses mid-powered LEDs spaced uniformly for even distribution on the task plane.



FULL RANGE, ON-BOARD DIMMING TO OFF

Edge comes equipped with individual dimming to off on each luminaire.

21W & 60W



POWER SUPPLIES:

The power supply draws no power during off-state. Available with 8W, 21W or 60W power supplies to meet a variety of application needs.



EVEN GLOW DIFFUSER

Edge's Even Glow diffuser covers the LEDs for improved distribution, minimizes multiple shadow effects, and is easy to clean for applications requiring periodic wipe down.

ENERGY STAR® QUALIFIED WITH FOLLOWING CONFIGURATIONS

ES1
Two 12" units on an 8W power supply only

OR

ES2
One 22" units on an 8W power supply only

ORDERING GUIDE

Sample Number: UC-E - 22" - S - PS-21W - OCC

Lamp (UC-E)

Length (12", 22", 45")[†]

Finish (Silver)

Power Supply (PS-8W*, PS-21W, PS-60W)

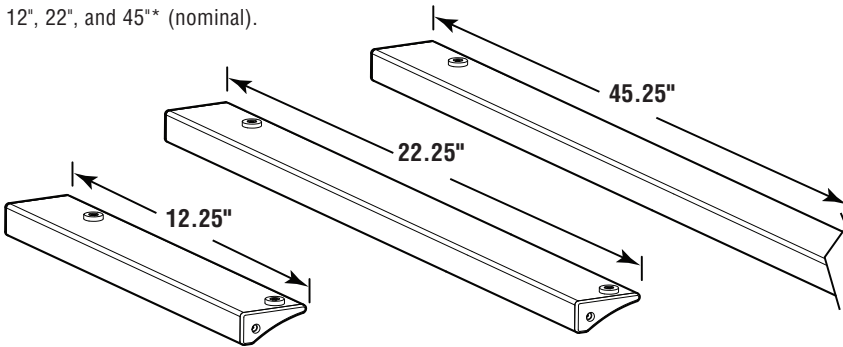
Occupancy Sensor (OCC)**

ENERGY STAR* (ES1, ES2)

[†] 45" can use 21W or 60W power supply.
 * Edge is ENERGY STAR® qualified when using two 12" units (ES1) or one 22" (ES2) unit on an 8W power supply.
 ** OCC sensor available for PS-21W & PS-60W only.

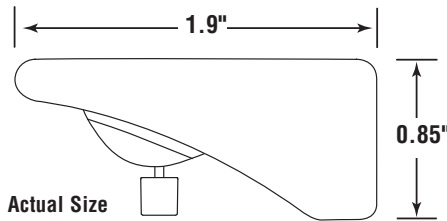
LENGTHS:

12", 22", and 45"* (nominal).



OCCUPANCY SENSOR

Optional occupancy sensor available for use with 21W or 60W power supply.



5 year warranty on all Edge by Finelite components.

TECHNICAL SPECIFICATIONS

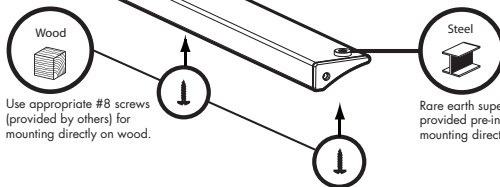
- Buy American Act of 2009 Compliant
- Efficacy (Lumens per Watt): 45": 62.2* / 22": 62.2 / 12": 48.9
- Light Output (Lumens): 45": 760* / 22": 380 / 12": 196
- Power Consumption: 45": 12.2W* / 22": 6.1W / 12": 4W
- Color Temperature: 3500K
- Color Rendering (CRI): 87
- R9 Value: 22": 32 / 12": 34
- L₉₀: Rated for 100,000 hours to 90% of initial lumens**
- LM-79 tested and LM-80 data is available
- Complies with FCC requirements for commercial and residential use
- Compatible with Personal Lighting System (PLS)
- End of life statement: 86% recyclable at the end of its useful life
- ETL Listed
- RoHS Compliant

* 45" performance is projected.

** L₉₀ lifetime is estimated by the LED manufacturer based on independent testing of the Edge luminaire.

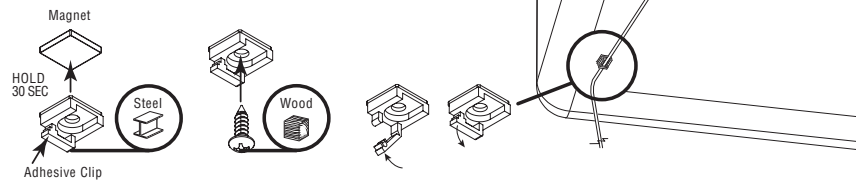
RARE EARTH MAGNETS

Powerful rare earth super magnets provided pre-installed for mounting directly on steel.



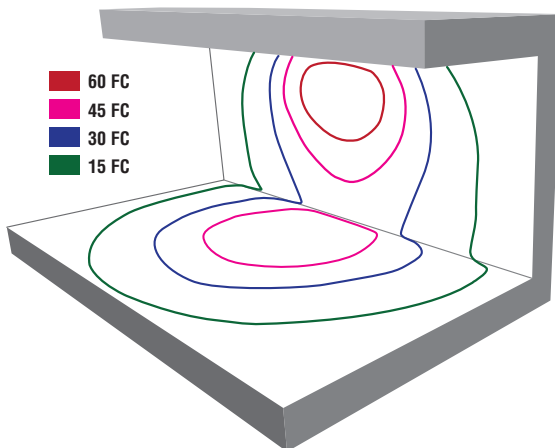
CABLE MANAGEMENT HARDWARE

For best results, clean magnet or cabinet surface with isopropyl alcohol before applying adhesive clip.



PHOTOMETRIC PERFORMANCE

Superior lateral throw provides proper illumination over a wide area. Example below: 22" unit installed on a 4 ft. binder bin.

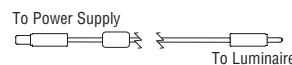


One 22" Edge provides ample illumination beneath a 4 ft. binder area. For additional output specify a 45" luminaire rather than two 22" luminaires.

CABLES

Edge by Finelite comes standard with (1) 12' power cable and cable management hardware.

• Power Cables



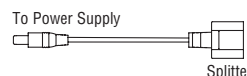
Cat No. CPNC-12 [12' Power Cable]

• Patch Cables



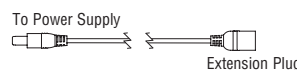
Daisy chains two male 1.3mm jacks.
 Cat No. CP-3 [3" Patch Cable]
 Cat No. CP-6 [6" Patch Cable]
 Cat No. CP-14 [14" Patch Cable]
 Cat No. CP-28 [28" Patch Cable]

• Splitter Cable



Cat No. CY-6 [6" Splitter Cable]

• Extension Cable



Cat No. CX-8 [8 ft. Extension Cable]