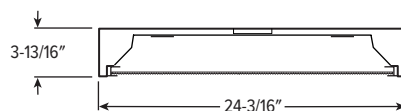


12 LED

2' Wide Surface Mount – Solid Sides



CATALOG #: _____

TYPE: _____

PROJECT: _____

FEATURES

- Fully enclosed spring-loaded cam latches allow years of hassle-free maintenance
- Mitered corners provide clean, crisp appearance with no visible rivets or screws
- Heavy-gauge welded end plates and housing ensure durable, rigid construction
- Fully gasketed door minimizes contaminants
- Maximize energy savings with efficacies as high as 135 lm/W
- Available with Avi-on wireless fixture controls
- Made Right Here® in the USA



ORDERING EXAMPLE: 12 - 4 - L84/835 - F AF12125 - OPTIONS - CONTROL/DIM - UNV

ORDERING INFO

SERIES	LENGTH	LUMENS ^[1]	CRI	CCT	DOOR FRAME	SHIELDING
12	2 2'	2'	8 80	27 2700K	F White flat aluminum	AF12125 Frosted acrylic, pattern #12, .125" thick
	4 4'	L43 4,300lm L65 6,500lm 4' L84 8,400lm L130 13,000lm		30 3000K 35 3500K 40 4000K 50 5000K	R White regressed aluminum S White flat steel FB Black flat aluminum RB Black regressed aluminum SB Black flat steel	

OPTIONS ^[2]

EM/10W 10-watt emergency battery
(L__) Additional lower lumen packages available. ^[4]
 Example: 7,500 nominal lumens =
 12-4-L84/840-FAF12125-(L75)

CONTROL ^[3]

– None
AVI-LVFA Avi-on wireless fixture control ^[5]
AVI-LVFA-CS2-PIR Avi-on wireless fixture control with PIR motion and daylight sensor ^[6]

SPECIFICATIONS

- HOUSING** – 20-gauge die-formed, welded C.R.S.
- DOOR FRAME** – 20-gauge C.R.S. or 0.050" extruded aluminum with mitered corners. Fully enclosed spring-loaded cam latches.
- SHIELDING** – Frosted acrylic lens, pattern #12, .125" thick.
- FINISH** – 92% minimum average reflective white polyester powder coat bonded to phosphate-free, multi-stage pretreated metal. All parts painted after fabrication to facilitate installation, increase efficiency, and inhibit corrosion.
- ELECTRICAL** – High quality mid-power LED boards. See fixture performance data for lumen maintenance. 25°C maximum ambient operating temperature.
- MOUNTING** – Surface or suspended.
- LISTINGS** –
 - cCSAus certified as luminaire suitable for dry or damp locations.
 - Complies with the Buy American Act and other federal regulations. Request certification at hew.com/baa.
- WARRANTY** – 5-year limited warranty, see hew.com/warranty.

DRIVER ^[7]

DIM Driver with external dimming wires
DRV Driver without external dimming wires
DA Driver with 12V auxiliary power, without external dimming wires ^[8]

VOLTAGE

120 120V
277 277V
UNV 120-277V



NOTES

- Lumen output based on 3500 CCT. Actual lumens may vary +/-5%, See page 2 for FIXTURE PERFORMANCE DATA.
- See page 2 for FINISH OPTIONS. Custom colors available upon request. Suspended mounting available. See page 3 for SUSPENDED MOUNTING DETAILS.
- See page 4 for AVI-ON BLUETOOTH WIRELESS CONTROL DETAILS. See page 3 for SENSOR PLACEMENT DETAILS.

- Specify in increments of 100 nominal lumens. Option must be specified with next higher lumen package.
- DA Driver only.
- DA Driver only.
- See page 3 for ADDITIONAL DRIVER OPTIONS.
- Avi-on Controls only.



12 LED

2' Wide Surface Mount – Solid Sides

FIXTURE PERFORMANCE DATA

	LED PACKAGE	DELIVERED LUMENS	WATTAGE	EFFICACY (lm/W)	LUMEN MAINTENANCE			
					L70	L80	L85	L90
2'	L43	4,214	31.2	135	>72000	>72000	>72000	50,000
	L65	6,628	51.9	128	>72000	>72000	58,000	36,000
4'	L84	8,516	62.9	135	>72000	>72000	>72000	50,000
	L130	13,116	101.2	130	>72000	>72000	58,000	36,000

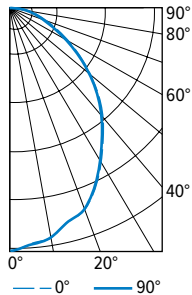
- Photometrics tested in accordance with IESNA LM-79. Results shown are based on 25°C ambient temperature.
- Wattage shown is average for 120V through 277V input.
- Results based on 3500K, 80 CRI, actual lumens may vary +/-5%
- Predicted lumen maintenance calculated from LED manufacturer IES LM-80 data and In situ temperature measurement.
- Predicted lumen maintenance calculated in accordance with IES TM-21 per Energy Star (R) TM-21 Calculator rev. 02.08.16.
- To calculate lumen output in emergency mode, multiply the battery wattage by the efficacy.
- Use multiplier table to calculate additional options.

MULTIPLIER TABLE

COLOR TEMPERATURE	
CCT	CONVERSION FACTOR
2700K	0.97
3000K	0.99
3500K	1.00
4000K	1.03
5000K	1.06

PHOTOMETRY

12-4-L84/835-SAF12125-DIM-UNV Total Luminaire Output: 8516 lumens; 62.9 Watts | Efficacy: 135 lm/W | 80 CRI; 3500K CCT

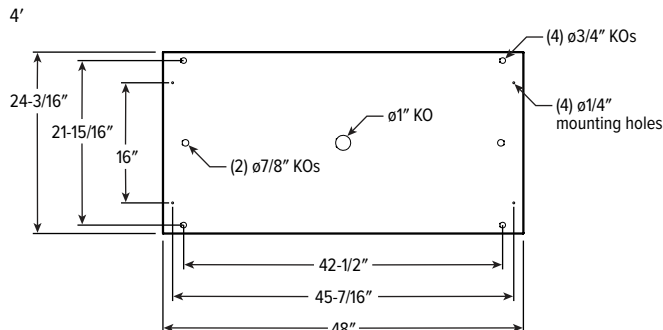
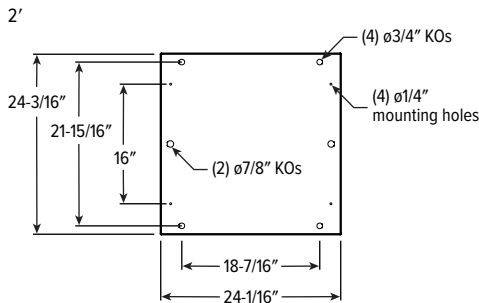


VERTICAL ANGLE	HORIZONTAL ANGLE			ZONAL LUMENS
	0°	45°	90°	
0°	3891	3891	3891	
5°	3799	3794	3794	361
15°	3557	3548	3548	1009
25°	3175	3164	3164	1459
35°	2609	2584	2577	1615
45°	1978	1933	1911	1493
55°	1341	1289	1267	1164
65°	817	782	774	790
75°	425	416	442	459
85°	149	151	175	165
90°	0	0	0	

LUMEN SUMMARY	ZONE	LUMENS	% FIXTURE
	0 - 30	2830	33
	0 - 40	4445	52
	0 - 60	7101	83
	0 - 90	8516	100
	0 - 180	8516	100

FIXTURE DETAILS

BACKVIEWS



FINISH OPTIONS

WHITE	BLACK	BRONZE	NICKEL	SILVER	ALUM

For custom color, please specify RAL code or a manufacturer code with description. All custom colors other than RAL require two sample swatches, minimum 1" square.



12 LED

2' Wide Surface Mount – Solid Sides

SUSPENDED MOUNTING DETAILS

AIRCRAFT CABLE

ORDERING EXAMPLE: ACF*4P/D48			
PREFIX		TYPE	LENGTH
ACF*4P	Four point mount adjustable aircraft cable	D 1" grid & hardpan	24 24"
		N 9/16" grid	48 48"
		S Slot grid	96 96"
			144 144"
			192 192"
			240 240"
			300 300"

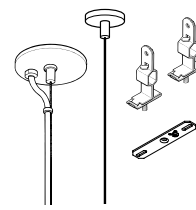
CORD OPTIONS

Units specified with aircraft cable require cord. Please specify cord type using ordering information below. Long fixture rows may require multiple feed points based on 18ga conductor size.

EXAMPLE: S2438D/W				
CORD TYPE	LENGTH	# OF COND. ¹	WIRE SIZE	COLOR
S	24 24"	3	8D 18ga	/W White /B Black
	48 48"	4		
	96 96"	5		
		6		

¹ Includes (2) 22ga purple & pink dimming conductors

STANDARD HARDWARE (Grid & Hardpan)



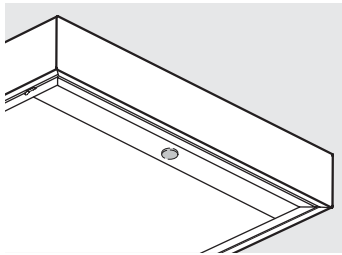
- Fixtures are provided with adjustable length aircraft cables and mounting hardware, must specify.
- One 5" canopy used at power feed location to cover the junction box. Three other suspension points use 2" canopy at the non-feed point. No J-box is required at non-feed points.

ADDITIONAL DRIVER OPTIONS

Note: Lumen restrictions apply, consult product builder at hew.com/product-builder.

CATALOG NUMBER	DESCRIPTION
DRV	Driver prewired for non-dimming applications
DIM	Dimming driver prewired for 0-10V low voltage applications
DIM1	1% dimming driver prewired for 0-10V low voltage applications
DIM LINE	Line voltage dimming driver (TRIAC and ELV compatible, 120V only)
DIM TRC	Line voltage dimming driver (TRIAC compatible, 120V only)
DA	Dimming driver with 12V auxiliary
SD40	40% step-dimming driver
SD50	50% step-dimming driver
DALI	DALI dimming driver
LDE1	Lutron Hi-lume 1% EcoSystem dimming LED driver

SENSOR PLACEMENT DETAILS



SEE NEXT PAGE FOR CONTROL DETAILS.



12 LED 2' Wide Surface Mount – Solid Sides

AVI-ON BLUETOOTH WIRELESS CONTROL DETAILS

FEATURES

Simple

- Gateway-free distributed control
- Factory pre-commissioning
- Contractor friendly installation
- Occupancy/vacancy/daylight sensing

Scalable

- Virtually unlimited network size
- Spans small offices to large warehouses
- Flexible control strategies

Secure

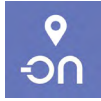
- Optional cloud connectivity
- UL IoT platinum security rating
- DLC 5.0 compliant

DIGITAL INSTALLATION TOOLS

Avi-On mobile apps provide intuitive, quick installation and commissioning. Pro tools are available to qualified installers.



Commissioning
Mobile App

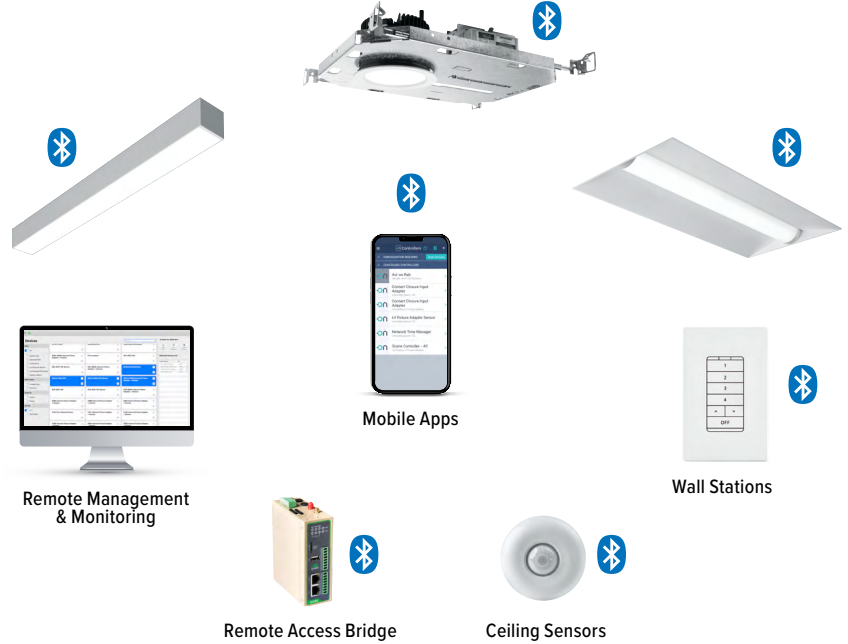


Zone Scanner
Web App



Commissioning
Pro App

SYSTEM COMPONENTS



The Bluetooth® word mark and logos are registered trademarks owned by Bluetooth SIG, Inc. and any use of such marks by Avi-on is under license. Other trademarks and trade names are those of their respective owners.

ACCESSORIES

WALL STATIONS	
AVI-2401AC	Scene controller - numbered 1-4, 120-277VAC
AVI-2402BAT	Scene controller - numbered 1-4, battery powered
AVI-2401AC-2	Dimmer with presets - percentages, 120-277VAC
AVI-2402BAT-2	Dimmer with presets - percentages, battery powered
AVI-2401AC-3	On/off/dimming, 120-277VAC
AVI-2402BAT-3	On/off/dimming, battery powered

NETWORK	
AVI-RAB-LTE	Remote access bridge – LTE connection
AVI-2001RAB-01-C	Remote access bridge – Wifi connection
AVI-KIT-NTM	Network time manager with battery backup
CEILING MOUNT SENSORS	
AVI-KIT-SEN-DUCM	PIR motion and ultrasonic sensor kit
AVI-KIT-SEN-ICM	PIR motion and photocell sensor kit

For load controllers and additional accessory info, see hew.com/avi-on

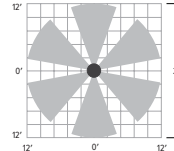
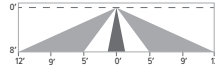
AVI-LVFA-CS2-PIR Avi-on wireless fixture control with PIR motion and daylight sensor. DA Driver only.

SPECIFICATIONS	
TYPE	PIR Motion + Daylight
MOUNTING HEIGHT	8' – 10'
DETECTION ANGLE	360°
TEMPERATURE RANGE	-30° to 50°C
RELATIVE HUMIDITY	10 to 80% non-condensing
IP RATING	IP20
MANUFACTURER	Avi-On

SENSOR COVERAGE PATTERNS

Side View

8' height: ø24' coverage



SENSOR DETAIL



Dimensions: 13/16" x 2-1/4"

