

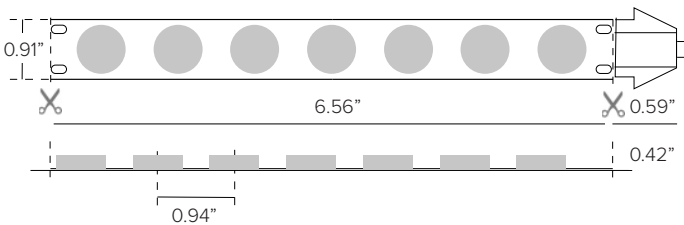
### KEY FEATURES

- Energy efficient bendable light strip with independent LED optics with fully extruded silicon jacket for continuous Wall Graze or Wall Wash illumination in a linear source.
- Fully sealed tape and optical component for use in both indoor or outdoor environments.
- Ideal for commercial asymmetrical wall washing and wall graze illumination applications.
- Manufactured to specified lengths with factory attached end preps for project requirements and efficient power configurations.
- Max continuous length: up to 14' per run
- Multiple dimming options available.

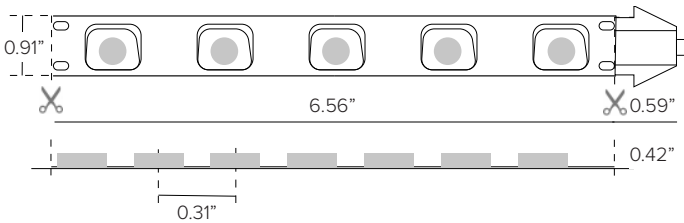


### DIMENSIONAL DRAWINGS

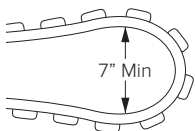
#### WALL GRAZE



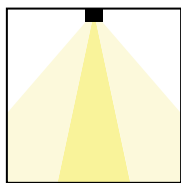
#### ASYMMETRIC



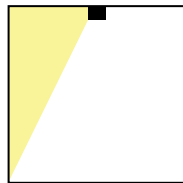
#### BEND RADIUS



### OPTICAL DIAGRAMS



**Wall Grazer (30°)**  
Recommended mounting setback between 1" to 5"



**Wall Wash (120° x 60°)**  
Recommended mounting setback between 3" to 12" with ideal setback between 6" to 9"

### DETAILS

<b>LEDs</b>	13 LEDs per foot Wall Graze Optic / 9 LEDs per foot Wall Wash Optic
<b>Wattage</b>	6W/ft
<b>Color Temp</b>	2700K / 3000K / 3500K / 4000K
<b>Color Consistency</b>	Bin centered on the Planck curve with a +/- 2 step MacAdam tolerance.
<b>CRI</b>	≥Ra90
<b>End Preps</b>	Factory prepped end preps available (See Page 2). End prep connections contain UV cured epoxy for complete water tight seal.
<b>Field Cuts</b>	Field trimmable every 6.56"
<b>Mounting</b>	Mounting clip or aluminum mounting channel options.
<b>Optics</b>	Wall Graze 30° / Wall Wash 120° X 60°
<b>Installation</b>	Optional thermal channels for optimal maintainance.
<b>Power Supply</b>	Listed Class 2 output, 24V DC power supply required
<b>Certifications</b>	cETLus Class 2 Listed Tested in accordance with LM-79-08 Energy efficient for California installations.
<b>Compliance</b>	ROHS compliant MRI Safe, driver to be mounted outside of MRI room. To be use with plastic or aluminum profiles only. To be installed with adhesive or MRI safe hardware only, no factory provided mounting hardware to be used.
<b>Warranty</b>	5 year warranty

### FIXTURE DATA

Model	Kelvin Temp	Efficacy* Lm/Wt	Lm/Ft
Wall Graze	3000K	115	688
Wall Wash		75	451

### LED DATA

Model	Wt/LED	Viewing Angle	Lifespan at 90% drive
Wall Graze	0.46	30°	40,000hrs
Wall Wash	0.67	120° x 60°	40,000hrs

PRODUCT CODE	TYPE	WATTAGE	IP RATING	OPTICS	COLOR TEMP	VOLTAGE	+	END PREP	+	MOUNTING	+	POWER SUPPLY	
DF	Duraflex	O	Optics	06	6.0W/ft	O	Outdoor IP66	WG	Wall Graze 30°	27	2700K	24	24VDC
				WW	Wall Wash 120° x 60°			30	3000K				
								35	3500K				
								40	4000K				

### REQUIRED END PREP

#### A



#### KT07UXWL

DURAFLEX OPTIC factory attached molded straight 2 pin 6" male end feed connection and 6" female connection with bare wire lead cable.

### PROFILE OPACITY LEVEL KEY:



**Uniform**  
Direct View



**Blended**  
Direct / Indirect View



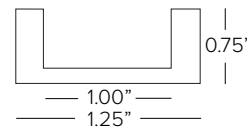
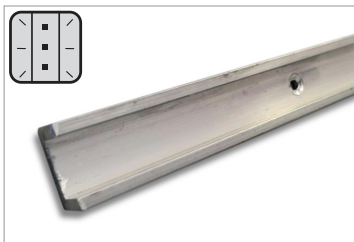
**Pixelated**  
Indirect View

### CLIPS AND SURFACE PROFILES



#### KT07UXWL-CL

Mounting clip kit. Includes 10 clips.



#### DL-88-ALUM-U-8

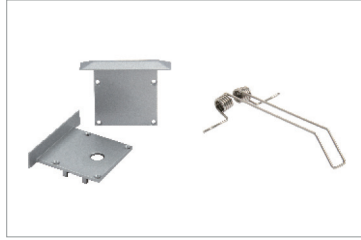
Aluminum U-Channel for linear run lengths with factory drilled countersunk screw holes at 6" OC. Available in 8ft lengths.

### RECESSED PROFILE



**P08D-S-PF-300**

Aluminum profile with white PMMA screen for recessed installation. Available in 118in (3M) lengths.

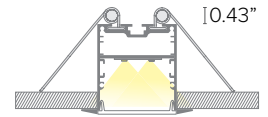
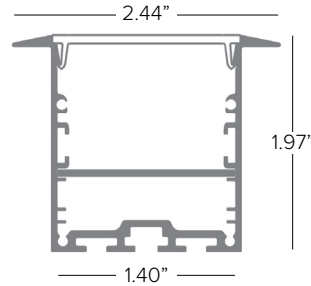


**P08D-A-EC**

3+3 pc silver end caps.

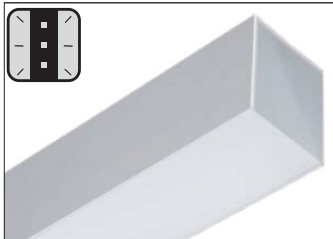
**P08D-A-SP**

3 pc metal ceiling attachment springs.



**NOTE:** 118 inch lengths must be shipped via freight only. For efficient shipping via UPS/Fedex, lengths can be cut to 59 inch upon request.

### SURFACE PROFILE

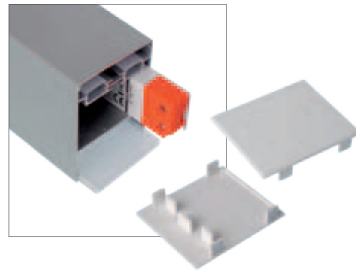


**PRDESO**

Aluminum profile for surface mount. Available in 4ft lengths.

**PRDESO-SL**

Rear support for surface mount.

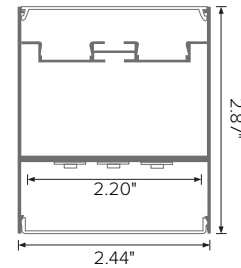


**PRDESO-FL**

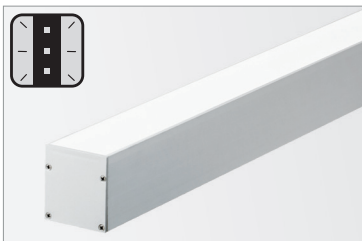
Front screen in flat opal polycarbonate plate.

**KTRDESO-FL**

Set of two side end caps flat screen.



### SUSPENDED PROFILE



**P01L-S-PF-300**

Aluminum profile with white polycarbonate screen for suspension installation. Available in 118in (3M) lengths.

**NOTE:** 118 inch lengths must be shipped via freight only. For efficient shipping via UPS/Fedex, lengths can be cut to 59 inch upon request.



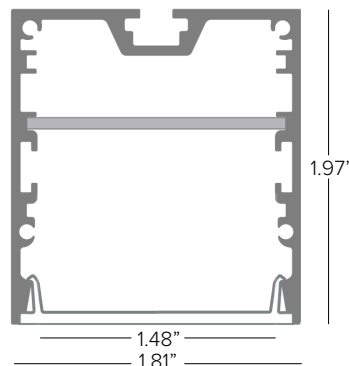
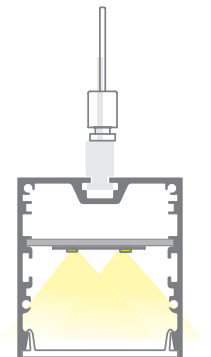
**P01L-A-EC**

3+3 pc silver end caps.



**P01L-A-FS**

3 pc metal suspension cables.





a brand of TARGETTI

# DURAFLEX OPTICS

## IP66 OUTDOOR

Power Supply (REQUIRED)	Type	Wattage	Input/Output Voltage	Dimmable	IP Rating	Output	Dimensions
<b>DMLE301242UD</b>	EMCOD MLE-UD ELECTRONIC DRIVER WITH WIRING COMPARTMENT.	30W	120-277V / 24V	FWD / REV PHASE / TRIAC / 0-10V / PWM	NEMA3R ENCLOSURE	UL CLASS 2	4.47" X 6.79" X 1.38"
<b>DMLE601242UD</b>	EMCOD MLE-UD ELECTRONIC DRIVER WITH WIRING COMPARTMENT.	60W	120-277V / 24V	FWD / REV PHASE / TRIAC / 0-10V / PWM	NEMA3R ENCLOSURE	UL CLASS 2	4.47" X 6.79" X 1.38"
<b>DMLE961242UD</b>	EMCOD MLE-UD ELECTRONIC DRIVER WITH WIRING COMPARTMENT.	96W	120-277V / 24V	FWD / REV PHASE / TRIAC / 0-10V / PWM	NEMA3R ENCLOSURE	UL CLASS 2	5.16" X 7.73" X 1.54"
<b>DMLE1922242UD</b>	EMCOD MLE-UD ELECTRONIC DRIVER WITH WIRING COMPARTMENT.	2X96W	120-277V / 24V	FWD / REV PHASE / TRIAC / 0-10V / PWM	NEMA3R ENCLOSURE	UL CLASS 2	5.04" X 10.94" X 1.81"
<b>DMLE2882242UD</b>	EMCOD MLE-UD ELECTRONIC DRIVER WITH WIRING COMPARTMENT.	3X96W	120-277V / 24V	FWD / REV PHASE / TRIAC / 0-10V / PWM	NEMA3R ENCLOSURE	UL CLASS 2	5.04" X 10.94" X 1.81"
<b>DEL60PWM</b>	ELECTRONIC PWM DRIVER STANDALONE, <b>UL LISTED ENCLOSURE PROVIDED BY OTHERS</b>	60W	120-277V / 24V	0-10V/PWM 10%	IP67	UR CLASS 2	5.9" X 2.09" X 1.38"
<b>DELX601241CPWM</b>	ELECTRONIC PWM DRIVER	60W	120-277V / 24V	0-10V/PWM 10%	IP67 DRIVER IN NEMA3R ENCLOSURE	UL CLASS 2	10" x 10" x 4" <sup>1</sup>
<b>DEL90PWM</b>	ELECTRONIC PWM DRIVER STANDALONE, <b>UL LISTED ENCLOSURE PROVIDED BY OTHERS</b>	90W	120-277V / 24V	0-10V/PWM 10%	IP67	UR CLASS 2	6.73" X 2.48" X 1.48"
<b>DELX901241CPWM</b>	ELECTRONIC PWM DRIVER	90W	120-277V / 24V	0-10V/PWM 10%	IP67 DRIVER IN NEMA3R ENCLOSURE	UL CLASS 2	10" x 10" x 4" <sup>1</sup>
<b>DELX1802242CPWM</b>	ELECTRONIC PWM DRIVER	2X90W	120-277V / 24V	0-10V/PWM 10%	IP67 DRIVER IN NEMA3R ENCLOSURE	UL CLASS 2	12" x 12" x 4" <sup>1</sup>
<b>DELX2703243CPWM</b>	ELECTRONIC PWM DRIVER	3X90W	120-277V / 24V	0-10V/PWM 10%	IP67 DRIVER IN NEMA3R ENCLOSURE	UL CLASS 2	12" x 12" x 4" <sup>1</sup>
<b>DMLV40124D</b>	MAGNETIC LOW VOLTAGE TRANSFORMER	40W	120V / 24V	MLV DIMMING < 1%	NEMA3R ENCLOSURE	UL CLASS 2	8.13" x 3.93" x 1.59" <sup>1</sup>
<b>DMLV60124D</b>	MAGNETIC LOW VOLTAGE TRANSFORMER	60W	120V / 24V	MLV DIMMING < 1%	NEMA3R ENCLOSURE	UL CLASS 2	8.13" x 3.93" x 1.59" <sup>1</sup>
<b>DMLV96124D</b>	MAGNETIC LOW VOLTAGE TRANSFORMER	96W	120V / 24V	MLV DIMMING < 1%	NEMA3R ENCLOSURE	UL CLASS 2	8.13" x 3.93" x 1.59" <sup>1</sup>
<b>PS060</b>	LUTRON HI-LUME PREMIER 0.1% CONSTANT VOLTAGE DRIVER WITH UL LISTED ENCLOSURE	96W	UNIVERSAL 120-277 VAC	HI-LUM DIMMABLE 0.1%	IP20/NOM CERTIFIED	UL CLASS 2	10.5" x 5.5" x 2" <sup>1</sup>

<sup>1</sup> Dimensions include enclosure with mounting bracket.

\* Constant voltage drivers 50/60HZ, voltage regulated with short circuit protection. Operating temperature -40 C- 80° C

\* Installation of power supply must be compliant to Class 2 installation standards. Refer to NEC and local building code requirements.

\* Consult factory for additional driver options (ie: DMX, DALI, wattage, size, shape, Lutron, ELDO, or others).

### MAXIMUM INTERCONNECTED TAPE LENGTH PER DRIVER

Fixture Wattage	Driver Wattage							
	30W	60W	96W	90W	2X90W	3X90W	100W	2X100
6W/ft	4FT	8FT	12FT	12FT	(2) 12FT	(3) 12FT	13FT	(2) 13FT

### PHOTOMETRY

