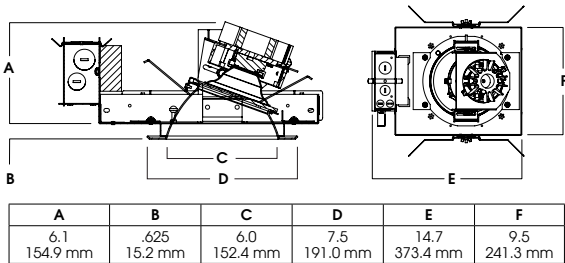
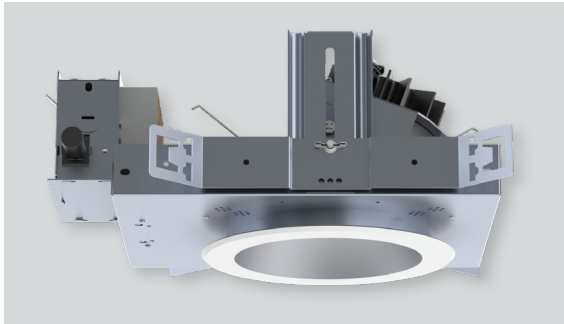
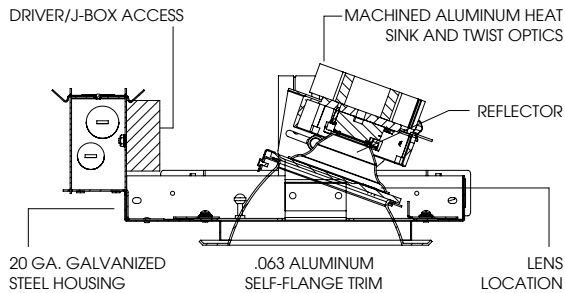




6" ROUND ADJUSTABLE TUNABLE COLOR (HUE) LU SERIES / 2000 LUMENS MAX



A	B	C	D	E	F
6.1 154.9 mm	.625 15.2 mm	6.0 152.4 mm	7.5 191.0 mm	14.7 373.4 mm	9.5 241.3 mm

RAFO6LEDLU - TRIM FLANGE / NON-IC RATED

APPLICATION

6" Round LU LED adjustable platform with Tunable color (HUE) LED system. System can be programmed for scenes or set for manual control. Adjusts to over 300,000 colors as well as 1650K-8000K white light.

FEATURES

Two-stage optical system for smooth light distribution and focus control. Quick change LED module with interchangeable optics for job site adjustment and fixture maintenance. Shallow plenum design. Tool-less driver and j-box access. Posi-lock trim retention torsion springs. Integral 0.625" collar with deep ceiling option for up to 2" thick ceiling (PR).

TRIM FINISH

A variety of architectural powdercoat and anodized finishes are available. Matte White flange is standard.

ELECTRONICS

LED system features LED module with proprietary Tunable color (HUE) technology that provides consistent, stable color with CCT control of +/- 100K over life of the light engine. Base CRI is 90 with <2 MacAdam Ellipse binning. Variety of dimming controls (by Others).

CONSTRUCTION

Housing/frame constructed of #20 ga. galvanized steel to resist corrosion. Self-flanged one piece trim spun from 0.063" thick high purity aluminum and finished to specification.

CODE COMPLIANCE

BAA Compliant. Non-IC rated. ETL certified to meet US and Canadian standards. Suitable for dry or damp locations. Optional Wet location. Manufactured and tested to UL standards No. 1598/8750.

WATTAGE TO LUMENS UPDATE

PART NUMBER	SOURCE LUMENS ¹	SYSTEM WATTS
RAFO6LEDLU12L	1250	25
RAFO6LEDLU15L	1500	32
RAFO6LEDLU20L	2000	43

SERIES	LUMENS ¹		CCT / K		BEAM		CONTROL / VOLTAGE ²			OPTIONS		TRIM	FINISH		TRIM OPTIONS ⁹				
RAFO6LEDLU	12L	1250 Lm	80CMX	80K-16K	ND	20°	DU_ ³ DL3E_ ³ DMXS_ ⁴	1% 0-10V Dimming 1% Lutron® EcoSystem® Fade DMX Standard Configuration	1 120V 2 277V	BH27 ⁵	27" Solid Bars	RA6FLU ⁸	SG ⁷	Semi-Diffuse	PF ¹⁰	Polished Flange			
	15L	1500 Lm			MD	30°				H12	12" - 24" Expandable Bars		HZ	Haze Full Diffuse	SOX ¹¹	Micro Prism Solite™ Lens			
	20L	2000 Lm			WD	40°				H06	6" - 12" Expandable Bars		MW	Matte White	PGX	Prismatic Glass Lens			
					XW	50°				CB24	24" C-Channel Bars		MB	Matte Black	GLX	Clear Glass Lens			
										EB	Black Housing	PT	Platinum Silver	FGX	Frosted Glass Lens				
										PR ⁶	Deep Ceiling Extension	OB	Oil Rubbed Bronze	CH	Charcoal	SOW	Micro Prism Solite™ Lens		
												AC	Anodic Champagne	AS	Anodic Sapphire	Wet Location			
												AM	Anodic Malachite	PGW	Prismatic Glass Lens	Wet Location			
												SN	Sun Gold	GLW	Clear Glass Lens	Wet Location			
												CO	Copper Metallic	FGW	Frosted Glass Lens	Wet Location			
												GH	Graphite						
												AMB	Anti Microbial Finish						
												CC ⁸	Custom Color						

EXAMPLE: RAFO6LEDLU20L80CMXMDU1H12/RA6FLUSGSOX

NOTES:
1 Peak Source Lumens 2 Contact Factory for Additional Options 3 Refer to CMX Controls Page 4 Contact Factory 5 Standard Bar Hangers 6 "F" Indicates Self-Flange Trim, Matte White Standard 7 Standard Finish
8 Contact Factory for Special Finishes 9 Consult Factory for Special Lenses/Louvers 10 Flange and Reflector Same Finish 11 Standard Lens



PROJECT: _____
TYPE: _____



Dimensions and values shown are nominal. Spectrum Lighting continually works to improve products and reserves the right to make changes which may alter the performance or appearance of products.

6" ROUND ADJUSTABLE TUNABLE COLOR (HUE) LU SERIES / CTM OPTIONS

recessed
fixtures



DU1 / DU2 - Fixture can be operated by the following 3 methods (Does Not Require DCA).

1. Use araya app. option for wireless control of dimming and color tuning. (See Figure 3)
2. Use with 0-10V controller and araya app. to control dimming and using color. (See Figure 4)
3. Use with (2) sets of 0-10V controllers and araya app. to activate sceneset feature or change CCT levoks. (See figure 5 & 5B)

DL3E1 / DL3E2 - For control of dimming and color tuning with EcoSystem controller (Supplied by Lutron) Fixture supplied with DCA¹. (See Figure 1)

DMX1 / DMX2 - For control of dimming and color tuning with minimum 4 channel DMX controller (Supplied by Others) Also can be programmed with araya app¹. (See Figure 2 & 2B)

Consult Factory for additional questions and information.

NOTES:

¹ Araya app. can be used to assign DMX addressed with Bluetooth app. (IOS Only) (Download by Others)

Figure 1.

Digital Control Adapter (DCA) for
Lutron EcoSystem®



Figure 2.

Digital Control Adapter (DCA) for
DMX (Including Bluetooth)

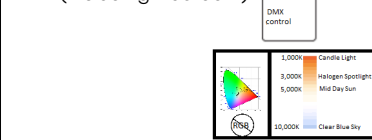
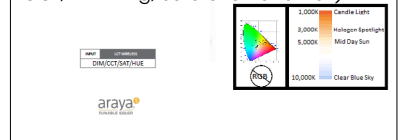


Figure 3.

Wireless Operation using LCT (to control
CCT, Dimming, Saturation and HUE)



**Requires araya Tunable Color IOS APP

Figure 2B.

Not Typical RGB/RGBW format for
DMX-512-A

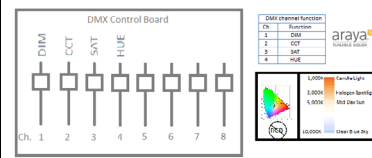


Figure 4.

0-10V Control Dimming/LCT Control of
CCT, Saturation and HUE

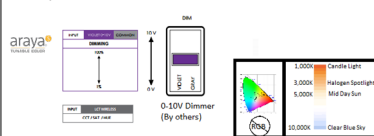


Figure 5.

0-10V Control of Continuous CCT and
Dimming

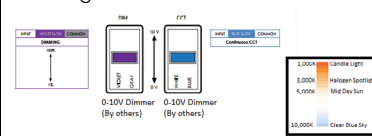


Figure 5B.

0-10V Control of Continuous CCT and
Dimming

