



## 4" ROUND DIRECT PICO SERIES



### C0455XT - WALL MOUNT

#### APPLICATION

4" round x 5" high cylinder luminaire designed for general illumination.

#### FEATURES

Spectrum's Cylinder series provides traditional architectural style with high performance and energy efficient illumination. Rugged design with flexible mounting, finish and LED options make these extremely versatile fixtures. Integral LED driver. Quick change LED module for job site flexibility and fixture upgrade.

#### FINISH

Multi-stage polyester powder-coat process applied on our dedicated paint lines. See mounting and color pages for standard finishes. All exposed materials are chromate pretreated to resist corrosion.

#### ELECTRONICS

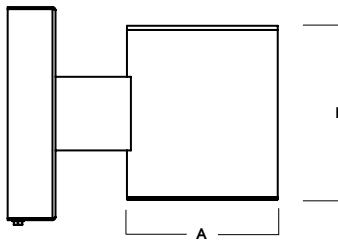
LED system features Xicato LED module with proprietary phosphor technology that provides consistent stable color with CCT control of +/- 100K over life of the light engine. Base CRI is 83 with 2-step MacAdam Ellipse binning. High CRI is 98 with 1 x 2-step MacAdam Ellipse binning. Variety of electronic 120V/277V and dimming drivers.

#### CONSTRUCTION

Fixtures are machined in our factory from 6063-H32 high purity aluminum extrusions. Silicone gasket seals optical chamber. Specular primary optical reflectors provide high efficiency illumination. Stainless steel hardware with galvanized steel brackets to resist corrosion.

#### CODE COMPLIANCE

BAA compliant. ETL certified to meet US and Canadian standards. Suitable for dry or damp locations. Manufactured and tested to UL standards No. 1598/8750.



A	B
4.5 114.3 mm	5.2 132.1 mm

Fixture Weight: 4.7 lbs

LUMENS / WATTAGE DATA				
PART NUMBER	SOURCE LUMENS <sup>1</sup>	DELIVERED LUMENS <sup>2</sup>	SYSTEM WATTS <sup>3</sup>	LPW
C0455XT17L	700	580	6.2	94
C0455XT10L	1000	773	9.1	85

SERIES	LUMENS <sup>1</sup>	CCT	OPTICS	DRIVER / VOLTAGE <sup>4</sup>	OPTIONS <sup>5</sup>	MOUNTING <sup>7</sup>	FINISH <sup>9</sup>
C0455XT	7L 700 Lm 10L 1000 Lm	83 CRI	XW 95°	EX DS10X DS2W1 Electronic Driver, 120V/277V 10%, 0-10V, 120V/277V ELV/MLV, 120V	FS CR Fuse Holder and Fuse Corrosion Resistant	WM3 Wall Mount 3" Extension	MW <sup>9</sup> Matte White MB <sup>9</sup> Matte Black PT <sup>9</sup> Platinum Silver CC Custom Color
		27K 2700K					
		30K 3000K					
		35K 3500K					
		40K 4000K					
		98 CRI			SO <sup>6</sup> Micro Prism Solite™ Lens GL Clear Glass Lens FG Frosted Glass Lens	EMRM EMEN 7W Remote EM 7W Remote with Enclosure	See Page 4 for Full Range of Color Options (83-90095)
		27HK 2700K					
		30HK 3000K					

**EXAMPLE:** C0455XT10L35KXWEX/SO/WM3/MW

#### NOTES:

1 Nominal Source Lumens at Any CCT 2 Nominal Delivered Lumens at 83 CRI at Any CCT with XW-SO-MW 3 At 83 CRI 4 Contact Factory for Additional Options 5 See Product Options Page for Details  
6 Standard Lens for 95° Beam 7 See Mounting Page for Details on Components and Finishes 8 See Color Page for More Options/Consult Factory for Special Finishes 9 Standard Finishes



PROJECT:

TYPE:



Dimensions and values shown are nominal. Spectrum Lighting continually works to improve products and reserves the right to make changes which may alter the performance or appearance of products.

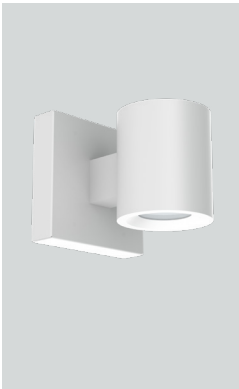
# 4" ROUND DIRECT

## PICO SERIES / FIXTURE OPTIONS



STANDARD FINISHES

MW  
MATTE WHITE



MB  
MATTE BLACK

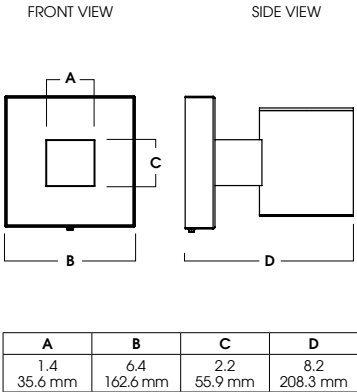
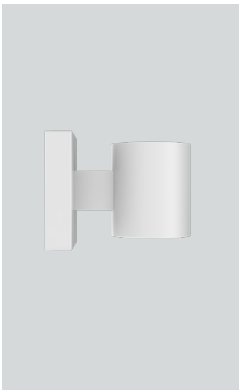


PT  
PLATINUM SILVER

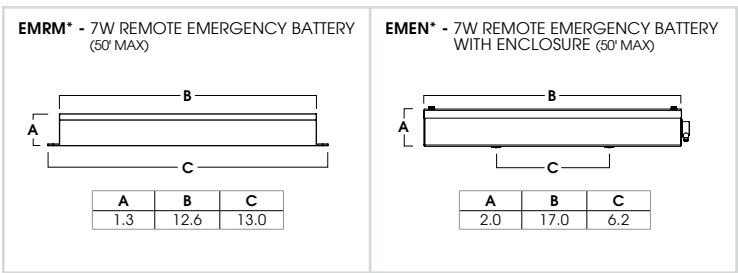


WALL MOUNT DETAIL

WM3  
WALL MOUNT 3" EXTENSION



EMERGENCY BATTERY OPTIONS



\*OTHER EM BATTERY SIZES AVAILABLE, CONSULT FACTORY

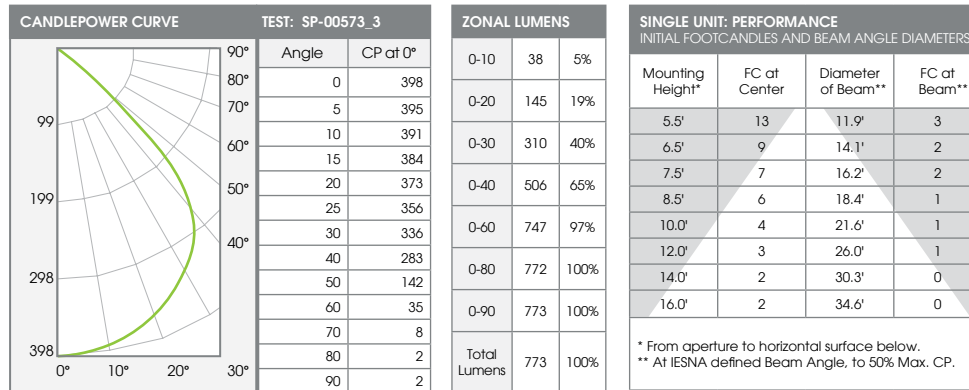
# 4" ROUND DIRECT

## PICO SERIES / PHOTOMETRIC DATA



C0455XT-10LxxK-XWEX-SOxxMW

10L XTRA WIDE - 83 CRI



Delivered Lumens: 773      CP @ 0° (Nadir): 398      Spacing Ratio: 1.26  
 Luminaire Watts: 9.1      Beam Angle: 94.5°      Output Multipliers: 7L x 0.75  
 LER: 85      CRI: 83

# COLOR OPTIONS - POWDER COAT PAINT FINISHES

NOTE: NO PRINTED IMAGE CAN EQUAL THE EXACT COLOR OF FINISH ON METAL.  
SEE INDIVIDUAL SPECIFICATION SHEETS OR CONSULT FACTORY FOR ADDITIONAL INFORMATION.



## STANDARD CORD / STEM / CANOPY FINISHES

## PAINT TIMES

FIXTURE COLOR	STANDARD CORD COLOR	STANDARD CANOPY / STEM COLOR
Matte White, Textured White	Matte White	Matte White
Gloss White	Matte White	Gloss White
Matte Black, Textured Black	Matte Black	Matte Black
All Others	Matte Black	Same Color as Fixture
Custom Color	Contact Factory	Contact Factory

TIER	COST	AVERAGE PAINT TIME*
Tier 1 - Standard Finishes	\$	①
Tier 2 - Typical Finishes	\$\$	①①
Custom Color	Contact Factory	Contact Factory

\*CONTACT FACTORY FOR SPECIFIC PRODUCT LEAD TIMES

## TIER 1 - STANDARD FINISHES

<b>MW</b> Matte White	<b>GW</b> Gloss White	<b>PT</b> Platinum Silver	<b>MB</b> Matte Black	<b>BZ</b> Bronze

## TIER 2 - TYPICAL FINISHES

<b>TW</b> Textured White	<b>TB</b> Textured Black	<b>MT*</b> Textured Silver	<b>OB*</b> Oil Rubbed Bronze	<b>SN</b> Sun Gold	<b>CO</b> Copper Metallic	<b>BR</b> Brecchia	<b>GH</b> Graphite	<b>CH</b> Charcoal	<b>AL</b> Almond	<b>VE</b> Verde Green
<b>BL</b> Blue Streak	<b>RD</b> Red Baron	<b>OR</b> Orange	<b>CM</b> Camel	<b>PL</b> Purple	<b>PG</b> Pub Green	<b>TQ</b> Turquoise	<b>SF</b> Sea Foam	<b>PK</b> Pink	<b>AY</b> Aero Yellow	<b>EG</b> Evergreen
<b>LG</b> Lime Green	<b>LB</b> Light Blue	<b>BY</b> Burgundy	<b>AK</b> Anodic Black	<b>AM</b> Anodic Malachite	<b>AZ</b> Anodic Bronze	<b>AS</b> Anodic Sapphire	<b>AN</b> Anodic Natural	<b>AC</b> Anodic Champagne		

## CUSTOM COLOR FINISHES

CONTACT FACTORY

**CC**  
Custom Color



\*UNAVAILABLE FOR WET LOCATION