



30v Pendant Zinc GP2001-AZ

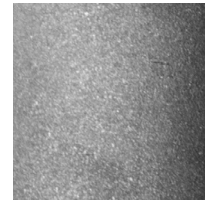
Available colors





Rust



Rust/Zinc



Zinc

	North America	Europe
Bulb	Max 15W LED, GU10, 120V	Max 15W LED, GU10, 220V
Color temperature	2700K (recommended)	2700K (recommended)
Lumen output	Dependent on bulb	Dependent on bulb
Cord	Black, 6.5ft (16ft available)	Black fabric, 2m (5m available)
Canopy	Black powder coated, Ø 4.5, H 3/8 (in)	Rusted steel, Ø 10, H 2.5 (cm)
Material	Zinc-coated steel	Zinc-coated steel
Size	Ø 2.5, H 12 (in)	Ø 6, H 30 (cm)
Weight	3,3lbs	1,5kg
Country of origin	The Netherlands	The Netherlands
Certification		

Dry locations only. After the natural oxidation process, all items are treated to stop further rusting.

**Designed in Seattle,
Washington, USA.**

Custom cords and canopies are available. Contact our offices for more information.