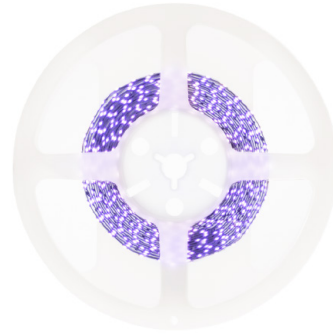


RGB Side Emitting LED Flexible Linear System:

RGB EDGE is a premium version of the EDGE family. This model provides the same side emitting qualities with the ability to contour to the tightest radius as the EDGE family only now it uses a 3 in 1 RGB LED. Compatible with DMX 512 and capable of producing 16.7 million color variations. RGB EDGE is field cuttable every 4" and supplied with a 3M self adhesive backing for simple installation. See MODA Metal[®] for extrusion options.



OUTPUT

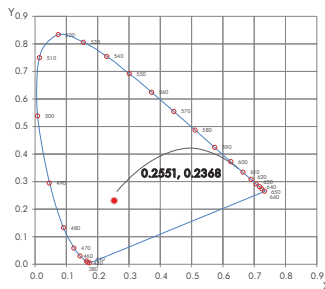
Delivered Lumens	159.79 lm / ft
CCT & SDMC	4426K - Full RGB
Chromaticity Coordinates	x: 0.2551 y: 0.2368 u: 0.1914 v: 0.2665
Color Bin Tolerance	N/A
Efficacy (lm/w)	31.21
CRI	N/A
Lumen Maintenance	70,000 Hours L70 @ 25°C 90,000 Hours L50 @ 25°C 50,000 Hours L70 @ 50°C 70,000 Hours L50 @ 50°C
Testing Data	Light Data LM-79-08 & LM-80-08

ELECTRICAL

Input Voltage	24v DC
Power Consumption	5.12w per ft (0.22A)*
Power Factor	≤ 1
Dimming	DMX 512: 1990
Emergency	N/A

*Varies based on run and driver

CIE 1931 CHROMATICITY DIAGRAM



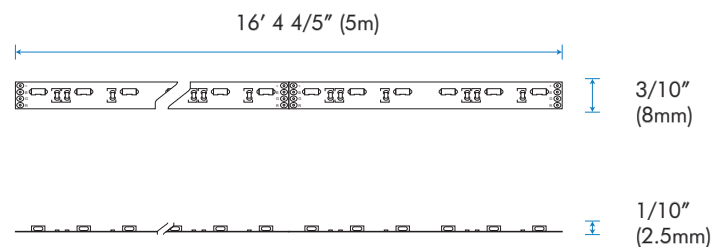
LUMINANCE DATA (cd/sq.m)

Angle in Degrees	Average 0-Deg	Average 45-Deg	Average 90-Deg
45	20307	10737	3895
55	31635	14739	3413
65	41637	16773	2735
75	50458	16015	1779
85	139711	22775	712

PHYSICAL

Applications	Cabinet, Cove, Display, Niches, Perimeter Lighting
Dimensions	Length 16' 4 4/5" (5m) Width 3/10" (8mm) Height 1/10" (2.5mm)
LED Spacing	3/5" (16mm)
Beam Distribution	110°
Cutting Distance	4" (101mm)
Weight	3.2oz (91g) Per Reel
Construction	Constant Voltage Design Protects LEDs And Prolongs Life. White FPCB
Thermal Management	N/A
Optics	N/A
Fixture Connections	Push To Fit Connectors
Operating Temperature	-22°F ~ 122°F (-30°C ~ 70°C)
Storage Temperature	-40°F ~ 176°F (-40°C ~ 80°C)
Humidity	0-95% Non Condensing

DIMENSIONS



MODA TECHNOLOGY

modaBIN™

STANDARDS & CERTIFICATIONS



LM 79

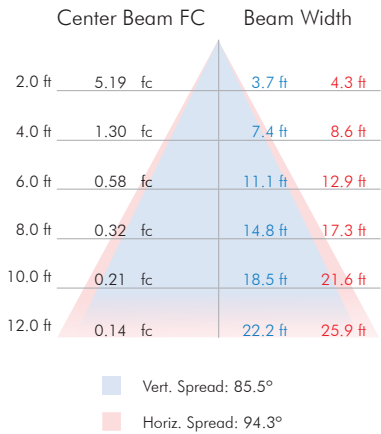
LM 80

5 YEAR WARRANTY

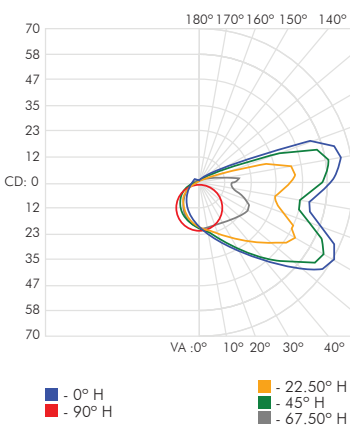
Project Name:

Notes:

ILLUMINANCE AT A DISTANCE



POLAR CANDELA DISTRIBUTION



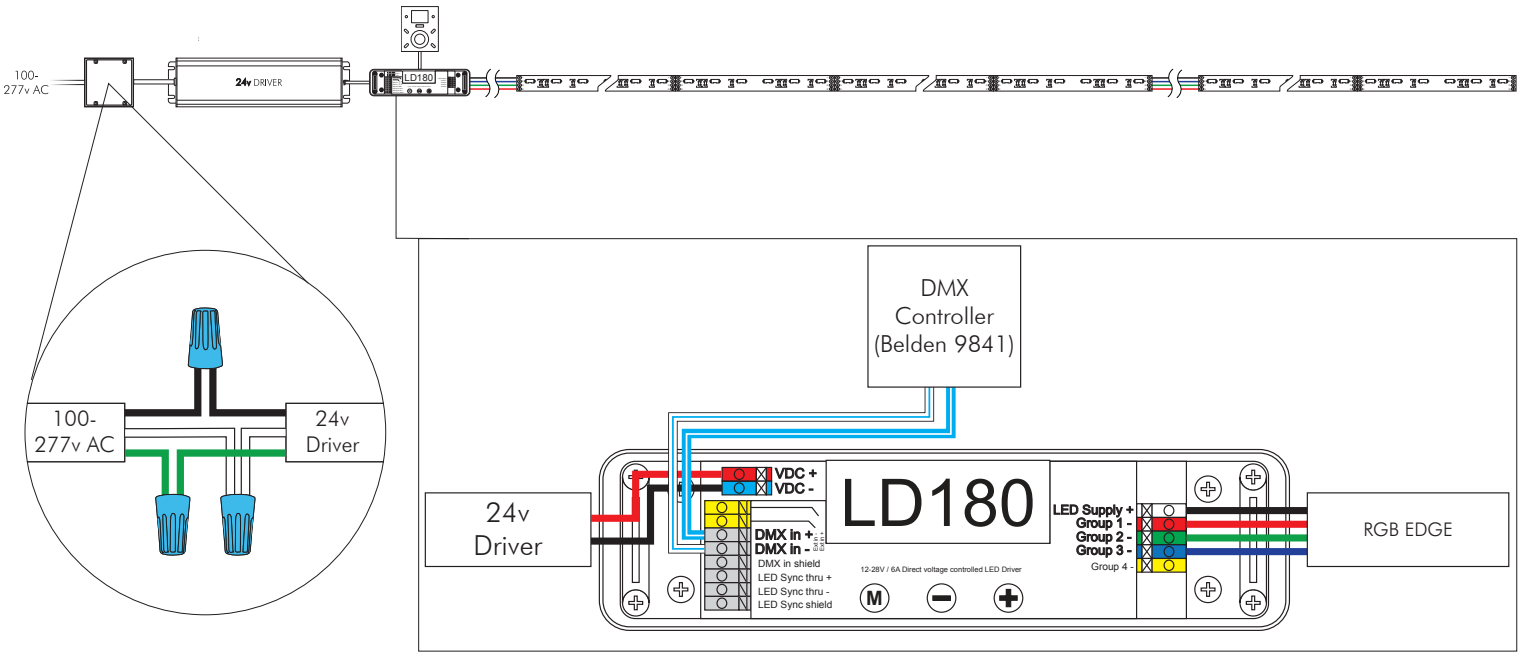
ZONAL LUMEN SUMMARY

Zone	Lumens	% Lamp	% Fixt
0-30	15.34	N.A.	9.60%
0-40	27.48	N.A.	17.20%
0-60	64.40	N.A.	40.30%
60-90	38.67	N.A.	24.20%
0-90	120.16	N.A.	75.20%
90-180	39.63	N.A.	24.80%
0-180	159.79	N.A.	100.00%

LUMENS PER ZONE

Zone	Lumens	% Lamp	% Fixt
0-10	1.74	N.A.	1.09%
10-20	5.13	N.A.	3.21%
20-30	8.53	N.A.	5.34%
30-40	12.14	N.A.	7.60%
40-50	16.17	N.A.	10.12%
50-60	20.58	N.A.	12.88%
60-70	21.16	N.A.	13.24%
70-80	17.45	N.A.	10.92%
80-90	17.19	N.A.	10.76%
90-100	18.66	N.A.	11.68%

WIRING



WIRING LEGEND

Power (100-277v AC)	24v Driver	DMX CONTROLLER	Leader Cable
Power Positive	Power Positive	Positive	24v Positive
Power Negative	Power Negative	Negative	Red
Ground			Green
			Blue

MAX RUN

150w Driver 16' 4 4/5" (5m)

ACCESSORIES



MRTA55
10' Leader Cable

Connects RGB EDGE to Power Supply

L: 1/2" (13mm)
W: 1/5" (6mm)
H: 1/10" (2mm)



MRTA56
4" Jumper Cable

Connects Two RGB EDGE and
Allows for Flexible Corner Bends

L: 1/2" (13mm)
W: 1/5" (6mm)
H: 1/10" (2mm)



MP17
100 - 277v AC

150w - IP67

L: 8 7/10" (222mm)
W: 2 7/10" (68mm)
H: 1 1/2" (39mm)



Kandi-Touch-Black /
Kandi-Touch-White

DMX 512 Controller

L: 4 1/5" (106mm)
W: 5 7/10" (146mm)
H: 2/5" (11mm)



LD180
DMX Interface

Constant Voltage LED Driver

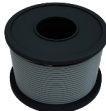
L: 6" (152mm)
W: 2" (50mm)
H: 9/10" (23mm)



BDL-9841-500FT

RS-458 Cable for DMX
24 AWG stranded TC conductors
polyethylene insulation

L: 500' (152.4m)



BDL-9841-1000FT

RS-458 Cable for DMX
24 AWG stranded TC conductors
polyethylene insulation

L: 1000' (304.8m)

STANDARDS & CERTIFICATIONS

Certification	Tested to UL & CSA by ETL For Use in USA & CANADA, Complies with California Title 24 Requirements, Lighting Facts. Exceeds ANSI C78.377A, CE & RoHS Compliant.
Class	3
Environment	Dry Location - IP20
Warranty	5 Year Limited Warranty

ORDERING

RGB-EDG-W