

RF402CICAT

4" Remodel Airtight C-Style Housing for Insulated Ceilings
Recessed Lighting

Job Information		
Project Name		Type
Location		
Quantity		Date
Contact/Phone		
Notes		

Features

Housing Can

Steel construction housing. Allows for use in 2" x 6" joist construction. The housing includes a Stucco stopper that prevents foreign objects, such as paint and plaster, from entering the housing and causing overheating issues.

Mounting Clips

Two pressure screw down clips located on the wall of the housing can. These clips can accommodate ceilings with thicknesses up to 13/16" (21mm). Clips include an integral metal air blocker to reduce heat flow into the plenums and ceiling cavities. Air blockers (patent pending) are compatible with ceiling thicknesses of 3/8" to 5/8". For ceiling thicknesses outside these measurements, Aluminum tape (not included) must be used to cover the opening to maintain an airtight housing.

Junction Box

Pre-wired three quick connectors included for easy wiring. Listed for through branch circuit wiring. Maximum eight no. 12 AWG 90°C branch-circuit

conductions (four in and four out). Nine 1/2" knockouts with true pry-out slots and four knockouts with Romex® cable clamp. Ground wire is provided on J-Box.

Thermal Protection

Self-resetting thermal protector deactivates fixture if overheating occurs due to improper lamping or misapplied insulation.

Socket

Ceramic socket for medium base PAR16, PAR20 or PAR30S lamps.

Lamps

- LED PAR16, 8W max.
- LED PAR20, 8W max.
- LED PAR30S, 14.5W max.
- PAR30S, 50W max. (when used with HV4-TH4007A trim only).

Listing

- cETLus listed for damp locations.

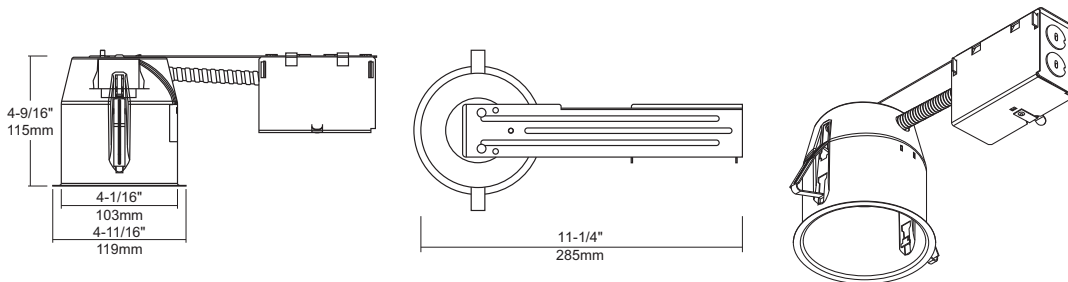
HOUSING SPECIFICATIONS

Airtight	Yes
Aperture	4"
Application	Recessed
Approved Location	Damp
Base	E26
Box Type	White
Certification	cETLus
Cut Hole	4-1/4"
Housing Type	C
Lamp Type	PAR16 LED
Material	Galvanized Steel
Max. Watt	14.5W
Primary Voltage	120V
Warranty	1 Year



Description

The RF402CICAT is a 4" aperture line voltage housing with screws down c-style mounting clips for use in insulated ceilings remodel applications.



Notes: Accessories should be ordered separately. For additional options please consult your Liteline representative. Romex is a registered trademark of Southwire Company. Due to our continued efforts to improve our products, product specifications are subject to change without notice.

Ordering Guide



RF402CICAT

4" remodel airtight c-style housing for insulated ceilings.

