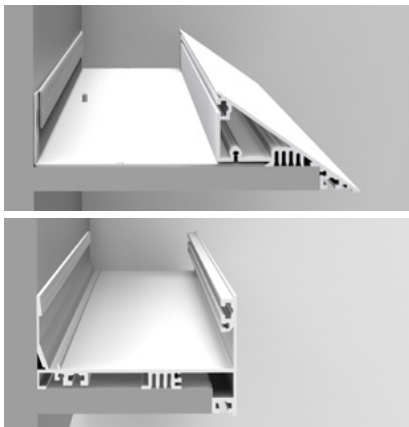


# ALCOVE RAMP - PATTERNS



**LUMENWERX**  
WWW.LUMENWERX.COM



## DESCRIPTION

**ALCOVE Ramp** is an enclosure Ramp measures 2 5/8" high by 8 1/2" deep and is available in both 90° and 35° angle ramp finish.

We make it simple to design patterns customized for you. While our standard is a 90° corner, we can customize angles to suit your needs.

**PROJECT:** \_\_\_\_\_

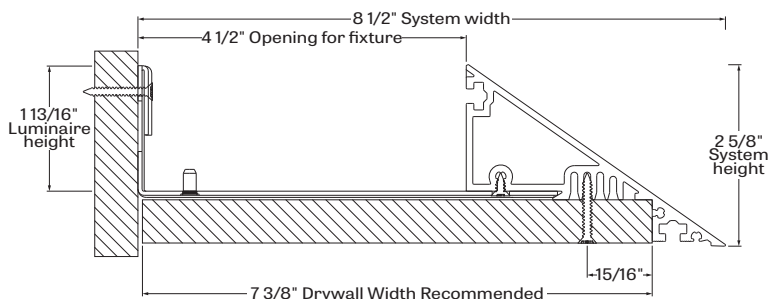
**TYPE:** \_\_\_\_\_

**NOTES:** \_\_\_\_\_

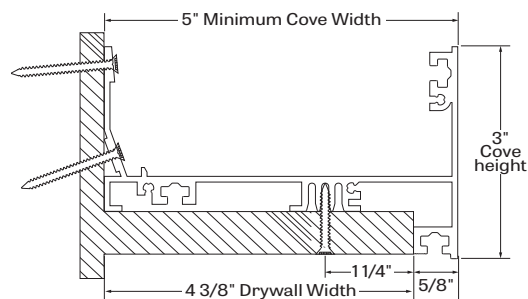
## ORDER GUIDE

| LUMINAIRE ID                          | PATTERN LENGTH   | CORNER TYPE   | UNLIT CORNERS DEGREE                        | MOUNTING   |
|---------------------------------------|--|---|---|--|
| <b>ALCRAPAT</b> - alcove ramp pattern | #FT - nominal length in feet<br>#IN - length in inches<br>Continuous Run - for luminaires over 12' | <b>LEO</b> - leveled outside corner<br><b>LEI</b> - leveled inside corner | <b>90</b> - 90 degrees<br># - other degrees | <b>COV35</b> - cove ramp 35 degrees<br><b>COV90</b> - cove ramp 90 degrees |

## CROSS SECTIONS



**ALCRAPAT** - alcove ramp 35°



**ALCRAPAT** - alcove ramp 90°

## PATTERN LENGTH

ALCOVE is highly flexible and can be installed as a single luminaire up to 12' long (see ordering code) or in continuous runs and patterns with a maximum module length of 8' (to simplify aiming). In continuous runs, modules are connected with easy-to-install joiner kits and electrical quick-connects. Total luminaire length must be 2" shorter than the inside of the cove to permit access to electrical connections.

## CONSTRUCTION RAMP

**Aluminium plate** - Aluminum 0.090" nominal thickness

**Steel plate** - 16 GA CRS / Cold rolled Steel

**Extrusion** - Extruded aluminum

**End-Plates** - Aluminium 0.125" nominal thickness

**Aligner** - 11 GA CRS / Steel

## WEIGHT RAMP

**ALCOVE Ramp 4ft** - 5.1Kg - 11.4 lb

**ALCOVE Ramp 8ft** - 10.2Kg - 22.8 lb

**ALCOVE Ramp 12ft** - 15.3Kg - 34.2 lb

## CERTIFICATIONS

**ETL** - Rated for Indoor Dry/Damp locations. Conforms to UL Standard 1598 and certified to CAN/CSA Standard C22.2 No. 250.0.

## WARRANTY

LumenWerx provides a five-year limited warranty of electrical and mechanical performance of the luminaires, including the LED boards, drivers, and auxiliary electronics. LumenWerx will repair or replace defective luminaires or components at our discretion, provided they have been installed and operated in accordance with our specifications. Other limitations apply, please refer to the full warranty on our website.

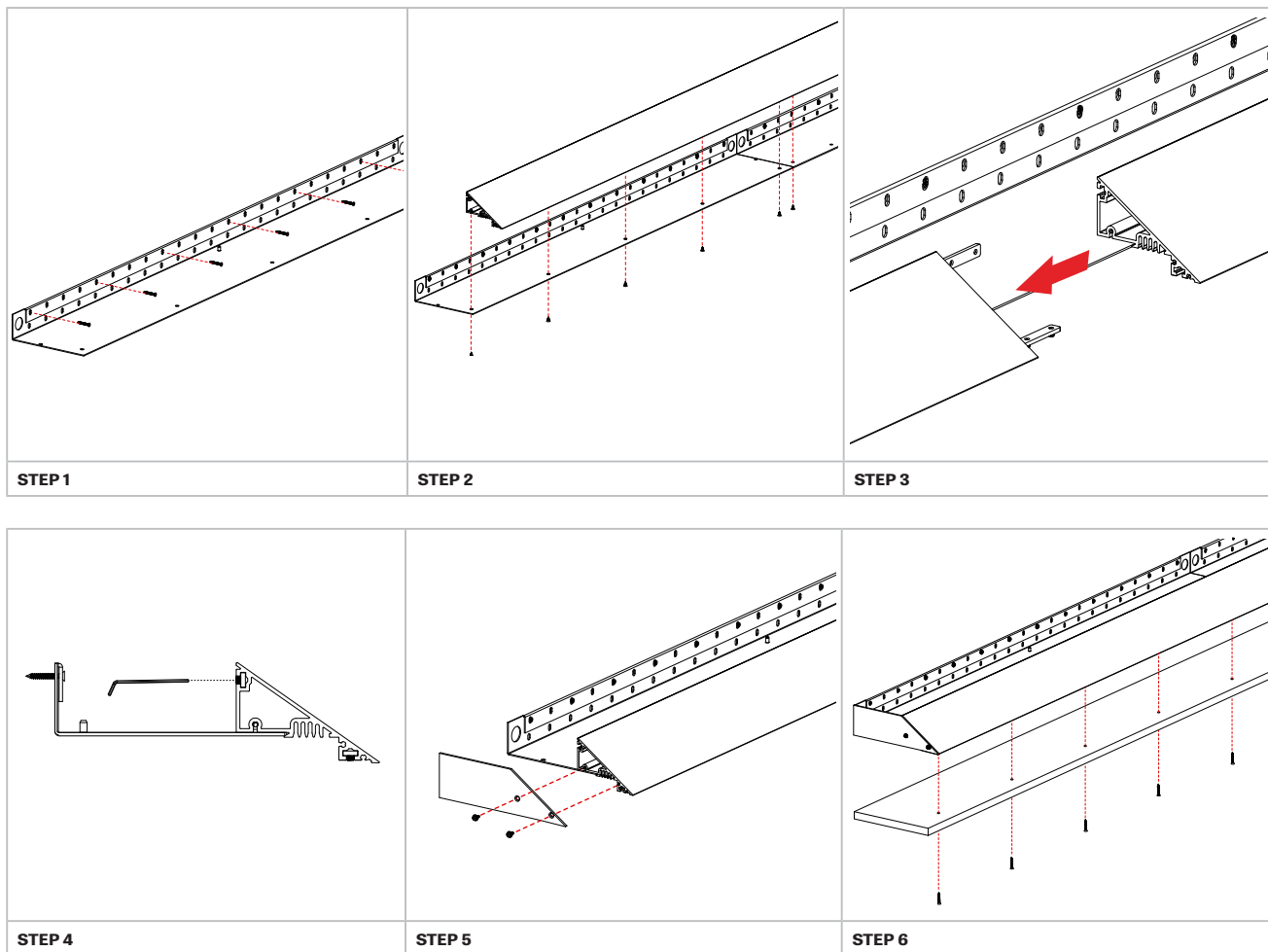
# ALCOVE RAMP - PATTERNS

## INSTALLATION

ALCOVE Ramp eliminates the need to construct a site-built enclosure and can be installed as an individual cove luminaire up to 12' or in continuous runs and patterns.

The ALCOVE Ramp bracket mounts directly to the wall. The sloping fascia attaches to the bracket; in continuous runs, the sections slide together with aligning joiner brackets. A gypsum board bottom panel and finished painting are by others. See illustrations on page 3\*.

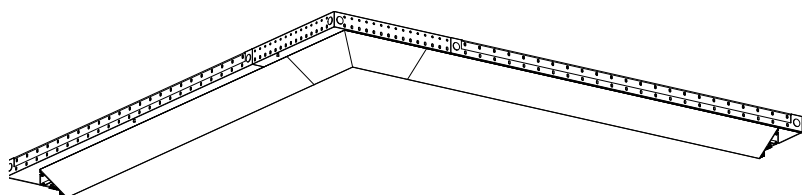
The ALCOVE luminaire fits neatly into the completed enclosure. In continuous runs, modules (maximum length of 8' to facilitate aiming) are connected with easy-to-install joiner kits and electrical quick-connects.



## ALCOVE Ramp

We supply:

1. Steel sheet-metal plates (48" long), enough to cover the needed length (max. 48").
2. One aluminium sheet-metal plate that can be field-cut to the exact length needed.
3. Aluminium extrusions 8FT/12FT long enough to exceed the needed total length.
4. End plates (1/8" thick) if needed.
5. Corner kits (16" wall length) if needed.
6. Flat-Head screws used for attaching the extrusion to the sheet-metal plates.

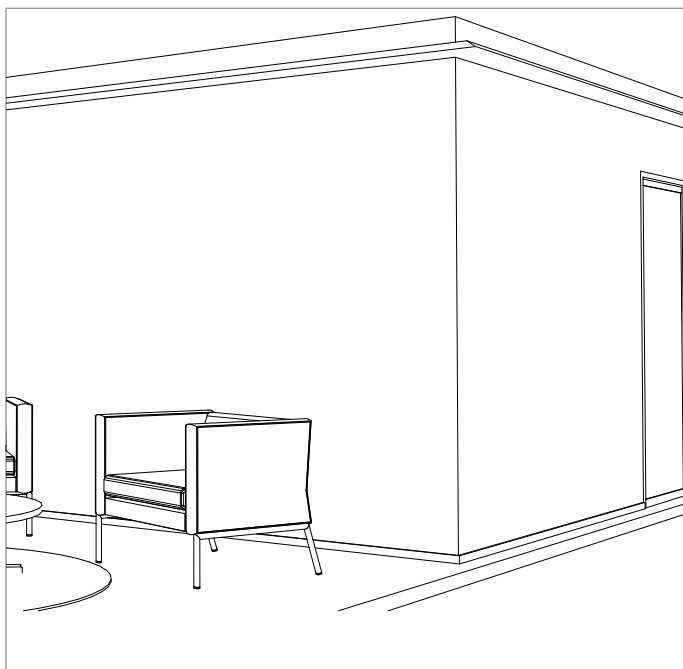


# ALCOVE RAMP - PATTERNS

**PATTERN - LEVELED INSIDE CORNER**



**PATTERN - LEVELED OUTSIDE CORNER**



## HOW TO SPECIFY A PATTERN?

Please follow these steps when specifying in order to be as precise as possible.

- (1) We require a drawing illustrating the pattern you are trying to achieve - anything from a simple line drawing to elaborate architectural drawings will suffice. Please mark clearly on the drawing the location of the wall.
- (2) Under **PATTERN LENGTH**, enter the overall length of your pattern - either in feet or inches.
- (3) Under **CORNER TYPE**, please enter LEO or LEI for leveled corner
- (4) Under **CORNERS DEGREE**, please enter the angle in degrees of each corner required to complete your pattern (for example 90+90+90).
- (5) Under **MOUNTING**, please enter the type of ramp under mounting

| PATTERN LENGTH                           | CORNER TYPE                  | UNLIT CORNERS DEGREE | MOUNTING                    |
|--|------------------------------|----------------------|-----------------------------|
| #FT - nominal length in feet             | LEO - leveled outside corner | 90 - 90 degrees      | COV35- cove ramp 35 degrees |
| #IN - length in inches                   | LEI - leveled inside corner  |                      | COV90- cove ramp 90 degrees |
| Continuous Run - for luminaires over 12' |                              |                      |                             |