

CURA

WALL OVERBED LIGHT FOR HEALTHCARE

LUMENWERX

Project: _____

Type: _____



Cura offers multi-function lighting with independently controllable indirect ambient and direct reading illumination from the bedhead. Chromawerx SOLA and DUO provide dim-to-warm and full-range tunable white capabilities.

Cura's compact and durable form, combined with multiple light sources and control options, makes this luminaire particularly well suited to a variety of healthcare environments, including senior living and patient rooms with separate exam illumination. Cura is also available with full exam and night light functions (see separate static white specification sheet).

Code



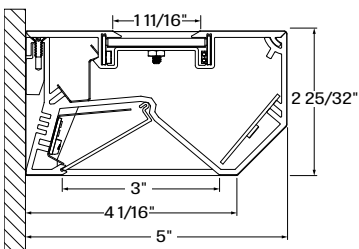
LUMINAIRE ID	LENGTH	CRI	LIGHT SOURCE	READING (DIRECT)	AMBIENT (INDIRECT)
CUR	4				
CUR - Cura, wall mounted bedlight for health care	4 - 4 ft	80 - 80CRI 90 - 90CRI (R9 - 50+)	SOLA - Dim-to-Warm 35K-22K DUO - Tunable White 27K-65K	REH - High output 750 lm/ft REM - Medium output 500 lm/ft REL - Low output 350 lm/ft	AMBH - High output 500 lm/ft AMBL - Low output 350 lm/ft AMBNA - No ambient

FUNCTION CONTROL ¹	VOLTAGE	FINISH
SOLA	120 - 120V 277 - 277V UNV - 120V-277V	W - Matte white AL - Aluminum WA - White antimicrobial Silverwerx CF# - Custom finish specify RAL# (e.g. RAL1028)
SDI - Single 0-10V input		
DUO		
DMX ² - DMX, to specify see pages 4 - 5 DA ² - DALI DDI - Dual 0-10V input for CCT/intensity PSQ0 ² - Lutron T-Series 1% Tunable White		

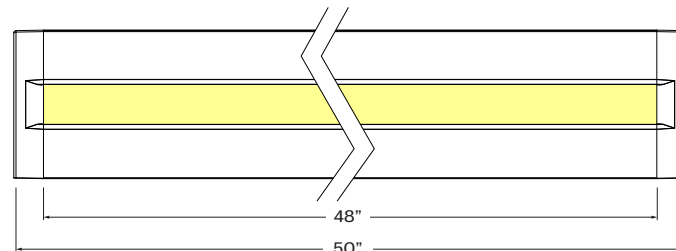
¹ PoE (Power-over-Ethernet) compatible. Consult factory for details.

² On-site commissioning of functions is required.

SECTION VIEW



TOP VIEW



CURA

WALL OVERBED LIGHT FOR HEALTHCARE

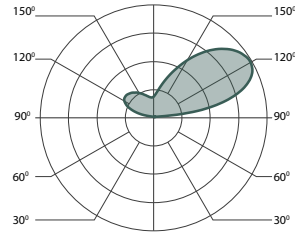
LUMENWERX

Project: _____

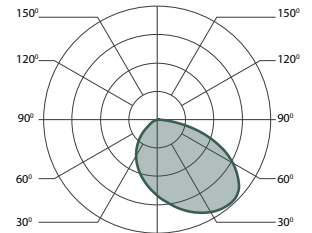
Type: _____



Ambient
Dimmable



Reading
Dimmable



Technical Specifications

HOUSING: Constructed of rigid extruded aluminum with die cast Aluminum end caps. Complete with spring loaded cover for ease of install and maintenance.

REFLECTOR: Specular reflector.

FINISH: Powder coated polyester paint that comes standard in white. Optional antimicrobial finish is optional along with custom RAL.

LENSING: Bottom compartment (Reading functions) use a high-efficiency Lambertian optic (HLO). Upper compartment (Ambient) is edge-lit with a prismatic micro-optic (PMO) light guide.

LIGHT SOURCE: Mid-flux LEDs in warm and cool color temperature are interleaved on circuit boards and are available in 80 and 90 CRI. L80 at greater than 60,000 hours.

ELECTRICAL: See controls

INSTALLATION: Cura comes complete with a die-cast aluminum wall bracket for easy installation.

WEIGHT: 16 lbs, 7.25 kg.

ENVIRONMENT: Ambient temperature at fixture location shall not exceed 30°C/86°F, indoor use, dry or damp locations.

CERTIFICATION: cETLus certification to UL 1598 and CAN/CSA Standard C22.2 No. 250.0.v

WARRANTY: Lumenwerx provides a five-year limited warranty of electrical and mechanical performance of the luminaires, including the LED boards, drivers, and auxiliary electronics. Lumenwerx will repair or replace defective luminaires or components at our discretion, provided they have been installed and operated in accordance with our specifications. Other limitations apply, please refer to the full warranty on our website.

Project: _____

Type: _____



CHROMAWERX SOLA AND DUO

Chromawerx SOLA dims output while warming the color temperature from 3500K to 2200K. Chromawerx DUO provides independent control of output and color temperature, from warm (2700K) to cool (6500K). Duo can help circadian rhythms and stimulate alertness. Chromawerx drivers are programmed to limit maximum light output and power across all color temperatures.

Controls

DMX

Factory-set, adjustable output current, multi-channel LED driver with universal (120-277VAC) input. Using DMX wall controls (optionally supplied by LumenWerx) or an existing DMX control system, two channels of LEDs (warm-white & cool-white) are independently adjustable. Each DMX driver has multiple output channels that can be independently addressed at the factory or on-site using built-in RDM (Remote Device Management) functionality. Dimming range from 100%-0%. At maximum driver load, efficiency<89%, PF>0.9, THD<20%.

DALI (DUO ONLY)

Factory-set, adjustable output current LED driver with universal (120-277VAC) input. Using an existing DALI control system (supplied by others), one control channel adjusts the fixture color temperature, and the other control channel adjusts fixture brightness. Dimming range from 100%-0%. At maximum driver load, efficiency<86%, PF>0.9, THD<20%.

SD1 (SOLA)

Factory-set, adjustable output current LED driver with universal (120-277VAC) input. Using a single 0-10V control signal, the light output warms in color temperature as it dims down to 1% and 2200K. At maximum driver load, efficiency<86%, PF>0.9, THD<20%.

DD1 (DUO)

Factory-set adjustable output current LED driver with universal (120-277VAC) input. Controlled via two individual 0-10V signals, one for setting light output down to a minimum of 1% and the other for adjusting the CCT (default range of 2700K-6500K).

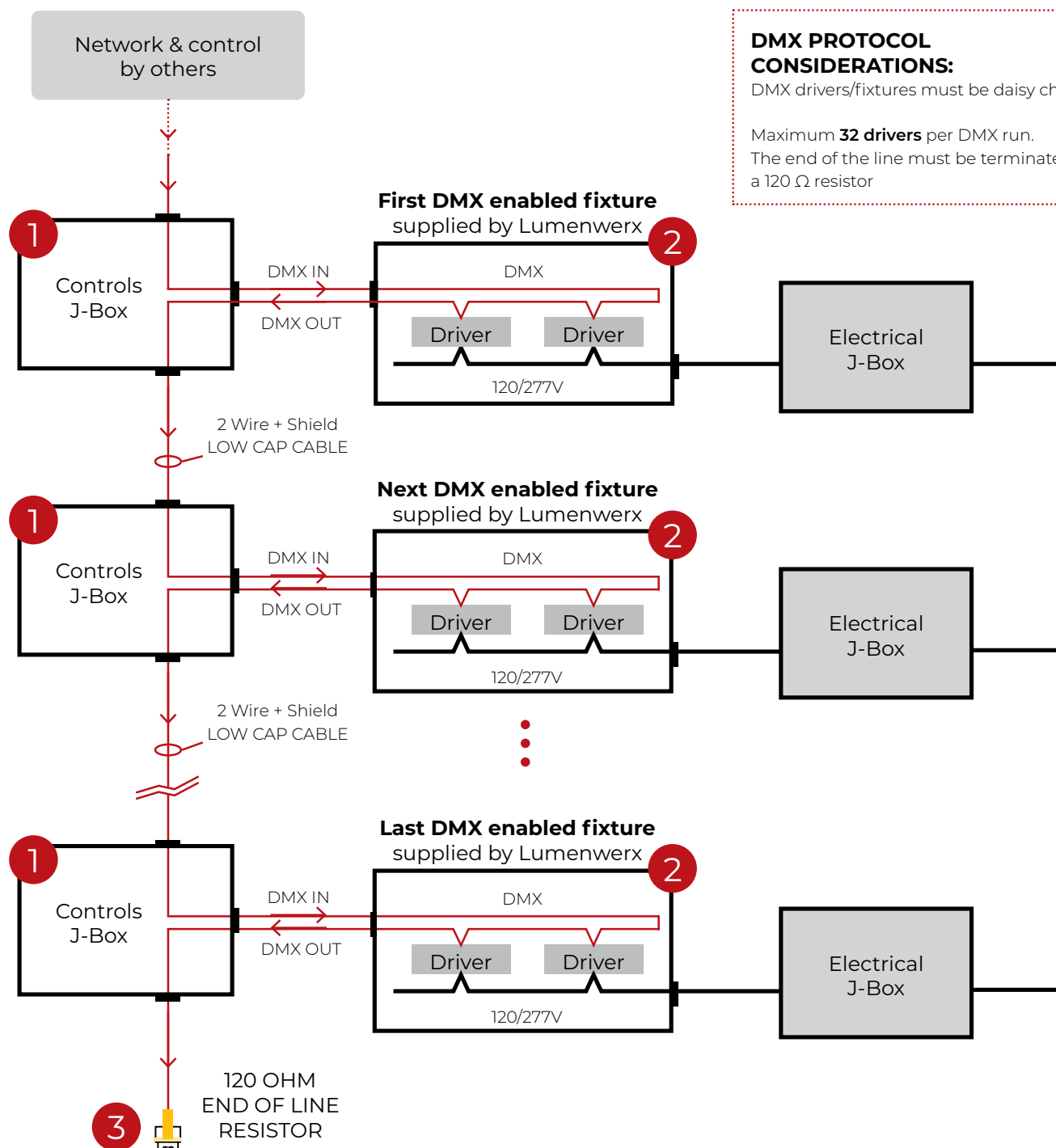
PSQO

Lutron T-Series 2-Channel tunable white drivers enable high-performance human centric lighting (HCL) applications. Digital control of color temperature (CCT) and intensity are achieved when used with the ESN T-Series tunable white controller as a part of a Lutron Quantum System

POE

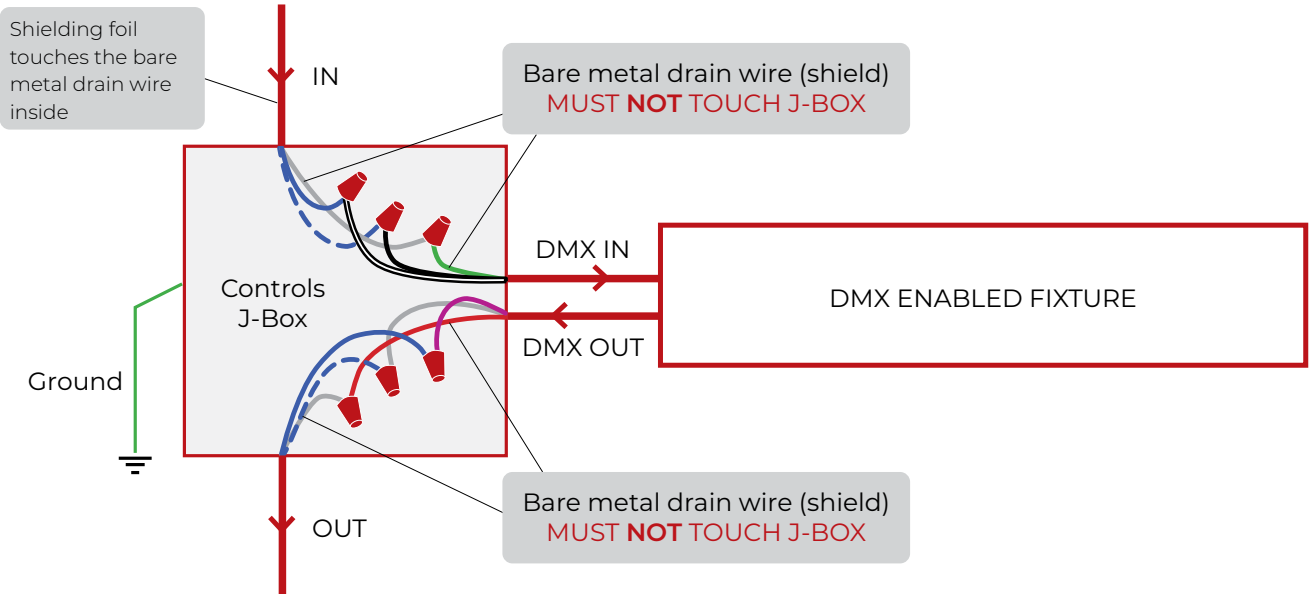
Depending on the PoE manufacturer selected, Lumenwerx will install the node in factory as either integral to the luminaire or as a remote module. Factory programming of the PoE node may or may not enable the following functionalities: lumen package, Duo (tunable white), emergency battery backup, and sensor integration. These must be addressed and evaluated on a case-by-case basis.

GENERIC DMX NETWORK ARCHITECTURE



1 J-BOX DMX DAISY CHAIN DETAIL

Low capacitance DMX Cable from Previous Fixture



Low capacitance DMX cable to next fixture

2 DMX CONNECTION RECESSED, SURFACE & WALL

