

Project: _____

Type: _____



Cura offers multi-function lighting with ambient, exam, reading, and night light illumination from the bedhead. Each lighting function can satisfy the illuminance recommendations of ANSI-IES RP29-16. Optional BIOS SkyBlue™ technology provides a biologically optimized light spectrum that supports both circadian stimulus and visual diagnosis.

Cura's compact and durable form, combined with multiple light sources and control options, makes this luminaire particularly well suited to today's healthcare patient rooms. Cura is also available with Chromawerx DUO and SOLA capability (see separate specification sheet).

Performance

FUNCTIONS	LUMEN OUTPUT	WATTS	EFFICACY LM/W
Ambient	4 200 lm	50 W	84 lm/W
Reading	2 800 lm	31 W	90 lm/W
Exam	9 600 lm	101 W	95 lm/W

Calculation with 4' fixture, 80 CRI, 35 K, 6' from floor In a room : H: 9' x W: 10' x D: 10'

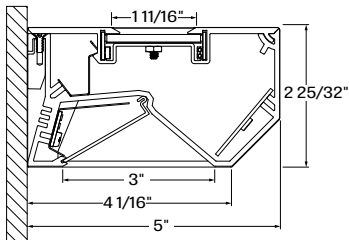
Code

LUMINAIRE ID	LENGTH	EXAM (DIRECT/INDIRECT)	AMBIENT (INDIRECT)	READING (DIRECT)	NIGHT LIGHT (INDIRECT)	
CUR						
CUR - Cura, wall mounted bedlight for healthcare	3 - 3 ft 4 ¹ - 4 ft ¹ Meets RP29-16 with EX1+AMB1.	EX1 ² - 2400lm/ft (with AMB1) EX2 - 2100lm/ft (with AMB2) EX3 - 1350lm/ft (with AMBNA) EXFS - 1700lm/ft (with AMBFS) EXNA - No Exam ² Meets RP29-16 in 4' static white only.	AMB1 ³ - High output SW 1050 lm/ft AMB2 - Medium output SW 750 lm/ft AMBFS - Medium output full spectrum 750 lm/ft AMBNA - No Ambient ³ Meets RP29-16 in 4'.	REH - High output SW 700 lm/ft REL - Low output SW 400 lm/ft RELFS - Low output full spectrum 400 lm/ft REB - Static biologically-optimized lighting. Low output 400 lm/ft	SW - Static white PCA1 - Phosphor converted amber (wavelength of 590nm) PCA2 - Phosphor converted amber (wavelength of 620nm) NA - No night light	
CRI	COLOR TEMP.	FUNCTION CONTROL ⁷			VOLTAGE	FINISH
80 - 80CRI 90 ^{4,5} - 90CRI (R9 - 50+)	27 ⁶ - 2700K 30 - 3000K 35 - 3500K 40 - 4000K ⁶ Not available with BIOS.	INDEPENDENT FUNCTION CONTROL D1 - 1% 0-10V (Ambient + Reading dimmable. Exam + Night Light ON/OFF control) DA ⁸ - DALI (4 ft only) LDE1 ⁸ - Lutron Hi-lume 1% Eco (4 ft only) LDES ⁸ - Lutron 5% EcoSystem (4 ft only) ELD1 ⁹ - eldoLED 1% ECOdrive ELDO ⁹ - eldoLED 0.1% SOLOdrive LOW-VOLTAGE CONTROL ¹⁰ LVC2# - Individual or sequential control for 2 functions LVC3# - Individual or sequential control for 3 functions LVC4# - Individual or sequential control for 4 functions (e.g. LVC44) The number of functions specified must coincide with the number of functions for the low voltage control scheme. PULL SWITCH CONTROL 2PS - 2 Pole Pull Switch - (1 function - Reading) 4PS - 4 Pole Pull Switch (2 functions - Ambient and Reading) All other specified functions (if selected) must be controlled independently. ⁷ PoE (Power-over-Ethernet) compatible. Consult factory for details. ⁸ On-site commissioning of functions is required (Night Light requires high-end trim adjustment). ⁹ Not available with 3 ft. ¹⁰ See table on page 4 to select control scheme.			120 - 120V 277 - 277V	W - Matte white AL - Aluminum WA - White antimicrobial Silverwerx CF# - Custom finish specify RAL# (e.g. CF1028)

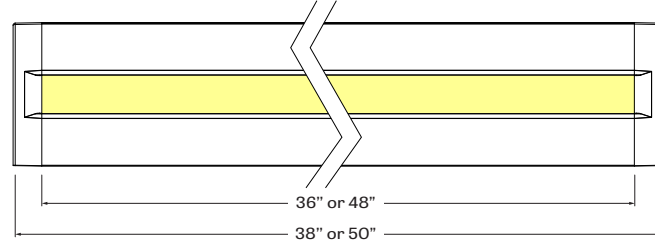
Project: _____

Type: _____

SECTION VIEW



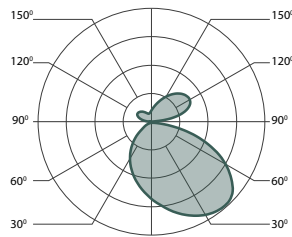
TOP VIEW



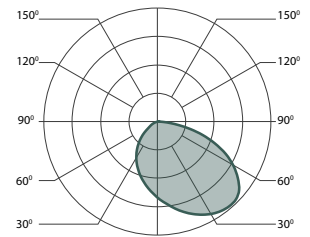
Photometrics



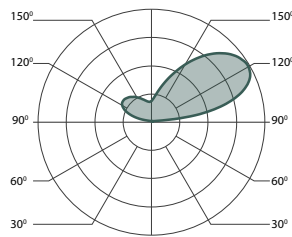
Exam
No dimming



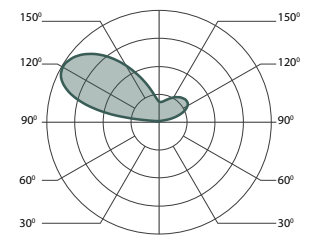
Reading
Dimmable



Ambient
Dimmable



Night Light
No dimming



FUNCTION	LUMEN OUTPUT	AVG. ILLUMINANCE	UNIFORMITY (AVG:MIN)
AMBIENT	4 200 lm	14 fc	2.19 : 1
EXAM	9 600 lm	110 fc	2.41 : 1
READING	2 800 lm	65 fc	1.71 : 1

Calculation with 4' fixture, 80 CRI, 35 K, 6' from floor In a room : H: 9' x W: 10' x D: 10'

Project: _____

Type: _____

Technical Specifications

HOUSING: Constructed of rigid extruded aluminum with die cast aluminum end caps. Complete with spring loaded cover for ease of install and maintenance.

REFLECTOR: Specular reflector.

FINISH: Powder coated polyester paint that comes standard in white. Optional antimicrobial finish along with custom RAL.

LENSING: Bottom compartment (Exam and Reading functions) uses a high-efficiency Lambertian optic (HLO). Upper compartment (Ambient and Night Light) is edge-lit with a prismatic micro-optic (PMO) light guide.

LIGHT SOURCE - STATIC WHITE: Mid flux LEDs with a CRI of 80+ are standard in static white. Optional Bios LEDs can be incorporated in the fixture to increase Cyanosis Observation Index (COI) and assist in regulating circadian rhythms. 90 CRI and other high range TM-30-18 sources are also available upon request by consulting the factory. Static white LEDs have been tested in accordance with IESNA LM-80-08 and the results have shown L80 lumen maintenance greater than 60,000 hours.

LIGHT SOURCE - FULL SPECTRUM: The full spectrum LED option offers improved color particularly in the cyan region that is beneficial in both healthcare and circadian lighting strategies. The cyan region in full spectrum LED is richer at the 480 nm range.

NIGHT LIGHT: Night light or chart light has the unique ability to hit specific ranges, from amber 590 nm or 620 nm, to match the latest extensive research, which shows that lighting in the redder spectrum of amber (620 nm) to be more effective in younger patients (NICU), as opposed to the traditional spectrum of 590 nm geared more towards adults.

ELECTRICAL: Each function is separately controlled with onboard drivers. Reading and Ambient functions come standard with 0-10V, 100%-1% dimming, constant current driver. Exam and Night Light functions use non-dim drivers. Fixtures can be configured with Curbell or other interfaces to communicate with control systems by others.

POE Depending on the PoE manufacturer selected, Lumenwerx will install the node in factory as either integral to the luminaire or as a remote module. Factory programming of the PoE node may or may not enable the following functionalities: lumen package, Duo (tunable white), emergency battery backup, and sensor integration. These must be addressed and evaluated on a case-by-case basis.

CONTROL/SWITCHING: Cura can be controlled by a variety of controls

- Four-pole pull chain switching & Wall multi-function switches supplied by others
- Patient pillow switch supplied & low voltage wall control (with LVC options)

INSTALLATION: Cura comes complete with a die-cast aluminum wall bracket for easy installation.

WEIGHT: 16 lbs, 7.25 kg.

ENVIRONMENT: Ambient temperature at fixture location shall not exceed 30°C/86°F, indoor use, dry or damp locations.

CERTIFICATION: cETLus certification to UL 1598 and CAN/CSA Standard C22.2 No. 250.0.

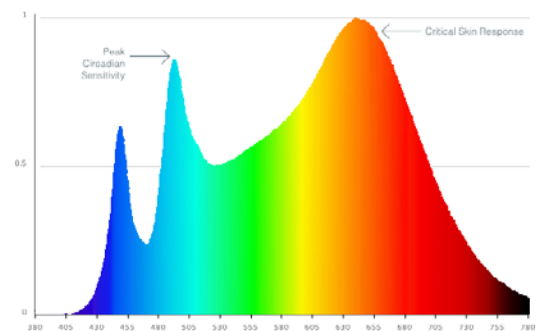
WARRANTY: Lumenwerx provides a five-year limited warranty of electrical and mechanical performance of the luminaires, including the LED boards, drivers, and auxiliary electronics. Lumenwerx will repair or replace defective luminaires or components at our discretion, provided they have been installed and operated in accordance with our specifications. Other limitations apply, please refer to the full warranty on our website.

bios

BIOS SkyBlue™ Technology

The BIOS SkyBlue™ Technology option with Cura provides a modified white LED spectrum with peak intensity in the "sky blue" region (490 nm) to align better with the peak circadian stimulus. This can help regulate sleep/wake cycles and alertness.

The enhanced deep-red spectrum (near 660 nm) can improve visual diagnosis and treatment of a range of ailments, including more accurate vein delineation, essential for detecting cyanosis and administering medication.



Project: _____

Type: _____

Function Control

INDEPENDENT CONTROL: On/Off Control of each load - dimming available for dimmable Loads

PULL SWITCH: Mounted to the right side as facing the luminaire.

2WPS - 2 pole pull switch which gives on-off control of a single function.

4WPS - 4 pole pull switch which controls sequentially 2 functions
F1 > F2 > F1+F2 > OFF

LOW VOLTAGE CONTROL: The Low Voltage Controller (LVC) option allows control of the luminaire functions from a patient pillow switch, bed side rail, or wall switch with normally-open momentary dry contacts. Depending on the number of functions to be controlled, various control options are available

See reference table for different configurations

LOW-VOLTAGE CONTROL (LVC) SCHEMES

		Reading	Ambient	Exam	Night Light
2 functions LVC2	LVC21	SM		I	
	LVC22		SM		I
	LVC23	ST		I	
	LVC24		ST		I
	LVC25	I		I	
	LVC26	SQ	SQ		
	LVC27	ST	ST		
3 functions LVC3	LVC31		SM	I	I
	LVC32	ST	ST	I	
	LVC33		ST	I	I
	LVC34	I	I	I	
	LVC35		I	I	I
	LVC36	SQ	SQ	I	
	LVC37	SQ	SQ		I
	LVC38	SM	SM	I	
4 functions LVC4	LVC41	ST	ST	I	I
	LVC42	SQ	SQ	I	I
	LVC43	SM	SM	I	I
	LVC44	I	I	I	I

SM: smooth dimming

I: On/off control

SQ: sequential

ST: Step dimming

The number of functions specified must coincide with the functions for the low voltage control scheme.