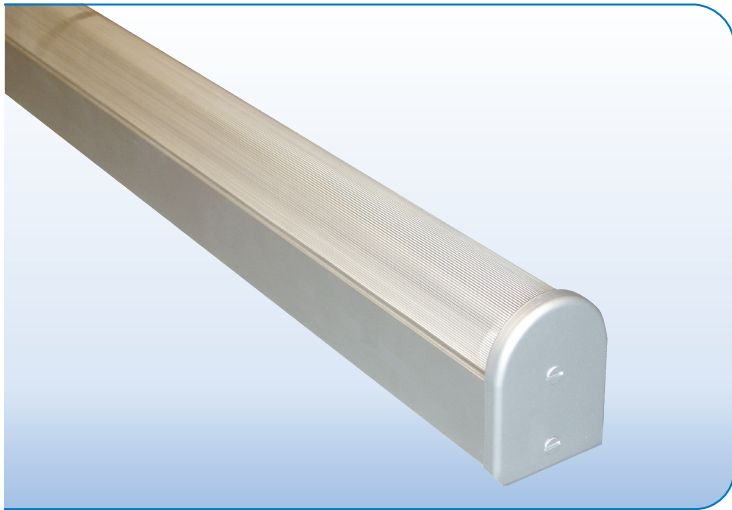


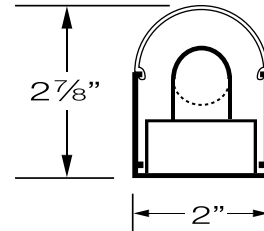


WET LOCATION / SURFACE MOUNT





PROJECT:

TYPE:



SPECIFICATIONS

HOUSING	Extruded aluminum housing up to 12' long.
FINISH	Satin anodized or white paint finish standard. Custom finish optional.
LENS	Extruded, round snap-on clear and frosted linear prismatic serrated widespread lens.
GASKET	1/4" Neoprene gasket between endcap and lens prevents dirt/bug entry and light leak.
BALLAST	Integral 120V or 277V electronic ballast. Dimming ballast available.
MOUNTING	SURFACE MOUNT: Mounting holes, field drilled as required.
CERTIFICATION	ETL listed for wet locations.  2001431  MADE IN THE USA

LAMPS & FIXTURE LENGTHS

LAMP TYPE	T5			
LAMP WATTAGE	14, 24W	21, 39W	28, 54W	35, 80W
LAMP DIMENSION	22 3/16"	33 7/8"	45 3/4"	57 9/16"
FIXTURE LENGTH	25"	37"	49"	61"
TANDEM FIXTURE LENGTH	N/A	71"	95"	119"

T5, T8 = 1Lamp in Cross Section • T5T, T8T Denotes Tandem

T8			
17W	25W	32W	40W
24"	36"	48"	60"
26"	38"	50"	62"
N/A	74"	98"	122"

PART NUMBER

SERIES	WATTS	LENS	VOLTS	BALLAST	FEED & MOUNTING	OPTIONS	FINISH	LENGTH
ALX2-RLR-WL-T5	REFER	F FROSTED	120	IS INST. START	SURFACE MOUNT	LS LIGHT SENSOR	S SATIN	REFER
ALX2-RLR-WL-T5T	TO	C CLEAR	277	PS PROG. START	B BACK CTR K/O	MS MOTION SENSOR	W WHITE	TO
ALX2-RLR-WL-T8	CHART		UNV	<u>DIMMING</u>	E ONE END K/O		C CUSTOM	CHART
ALX2-RLR-WL-T8T	ABOVE			CONSULT FACTORY	BE BOTH END K/O FD FIELD DRILL	<u>EM PACKS</u> EM 500L		ABOVE