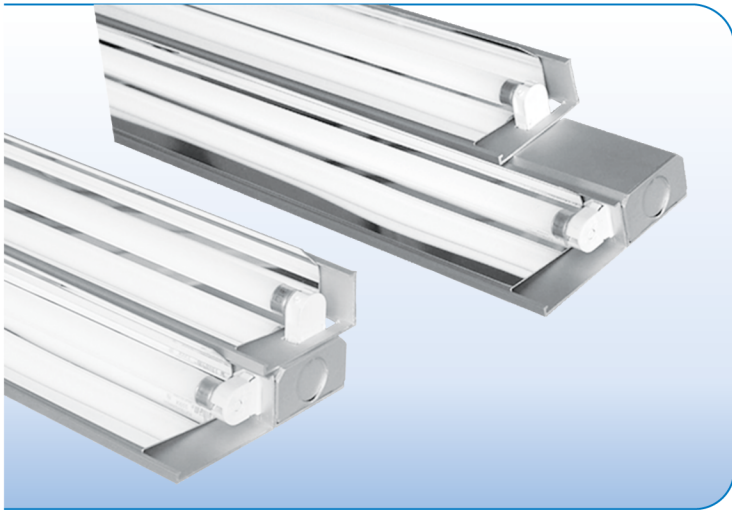
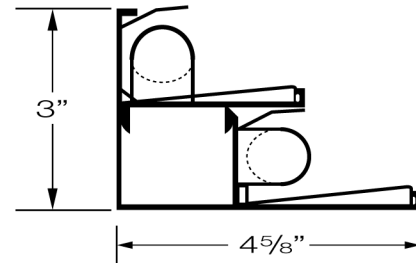


FLUORESCENT COVE AND INDIRECT LIGHTING

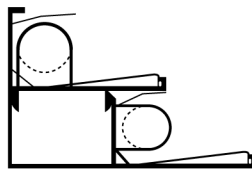


PROJECT: _____
 TYPE: _____

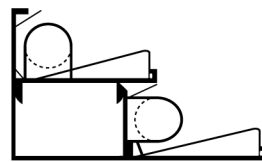


SPECIFICATIONS

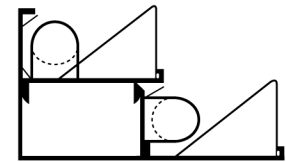
- HOUSING** 3" x 4 5/8" Two piece snap together top/bottom extruded aluminum housing up to 12' long.
- FINISH** Satin anodized or white paint finish standard. Custom finish optional.
- BALLAST** Integral 120 or 277V electronic ballast. Dimming and EM ballasts available.
- CERTIFICATION** UL listed for damp locations. E211631 MADE IN THE USA
- REFLECTORS** Precision asymmetric, high polished specular aluminum, three beam patterns available. Reflectors can be mixed to optimize performance, example: AS1/AS3 (AS1 top reflector/AS3 lower reflector).



AS1



AS2



AS3

LAMPS & FIXTURE LENGTHS

T5 FLOURESCENT LAMPS	14W, 24W HO	21W, 39W HO	28W, 54W HO	35W, 80W HO
T5 LAMP DIMENSION	22 3/16"	33 7/8"	45 3/4"	57 9/16"
ALX82-T5 FIXTURE LENGTH	23"	34 5/8"	46 1/2"	58 1/2"
ALX82-T5 (TANDEM) FIXTURE LENGTH	46"	69"	92 1/2"	116 1/2"
ALX82-S-T5 FIXTURE LENGTH	27"	38 5/8"	50 1/2"	62 1/2"
ALX82-S-T5 (TANDEM) FIXTURE LENGTH	50"	73"	96 1/2"	120 1/2"

PART NUMBER

SERIES	LAMPS	VOLTS	REFLECTOR	FINISH	LENGTH
ALX82-T5	14W 24W HO	120	AS1/AS1	S SATIN	SPECIFY
ALX82-T5T	21W 39W HO	277	AS2/AS2	W WHITE	
ALX82-S-T5	28W 54W HO	DIMMING	AS3/AS3	C CUSTOM	
ALX82-S-T5T	35W 80W HO	DOUBLE SWITCHED	MIXED EXAMPLE AS1/AS3		