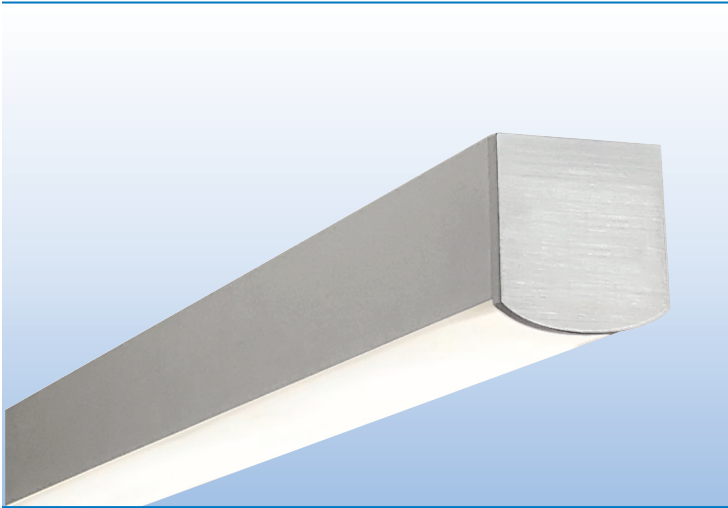
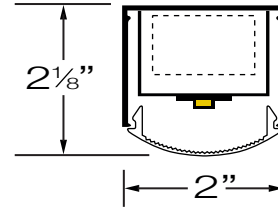




LINEAR CABLE SUSPENDED / SURFACE MOUNT



PROJECT:
TYPE:



SPECIFICATIONS

HOUSING	Extruded aluminum housing up to 12' long. Continuous runs available.
FINISH	Satin anodized or white paint finish standard. Custom finish optional.
LENS	Extruded DR acrylic, snap-on frosted widespread lens.
LED DRIVER	Integral, universal voltage; 0-10V dimming standard; 1% or 10% dimming.
MOUNTING	SURFACE MOUNT: Mounting holes pre-drilled. See page 2 for details. CABLE SUSPENDED: Aircraft cable suspension kit (SK), canopy and prewired with 18/5 SVT cord.
LED's	60,000 hours. (L70), High uniformity, 80 CRI
CERTIFICATION	ETL/CSA listed for damp locations.  2001431  MADE IN THE USA

LED COLOR & LUMEN OPTIONS

4' – 24" BOARDS		LUMENS PER FOOT – WATTS PER FOOT – LUMENS PER WATT								
LED COLOR	CRI	LOW			MEDIUM			HIGH		
WHITE 2700K	80	500 L/FT	3.5 W/FT	136 L/W	870 L/FT	6.5 W/FT	130 L/W	1160 L/FT	9.0 W/FT	127 L/W
WHITE 3000K	80	530 L/FT	3.5 W/FT	144 L/W	915 L/FT	6.5 W/FT	137 L/W	1220 L/FT	9.0 W/FT	133 L/W
WHITE 3500K	80	535 L/FT	3.5 W/FT	144 L/W	920 L/FT	6.5 W/FT	137 L/W	1225 L/FT	9.0 W/FT	133 L/W
WHITE 4000K	80	560 L/FT	3.5 W/FT	151 L/W	970 L/FT	6.5 W/FT	145 L/W	1290 L/FT	9.0 W/FT	140 L/W

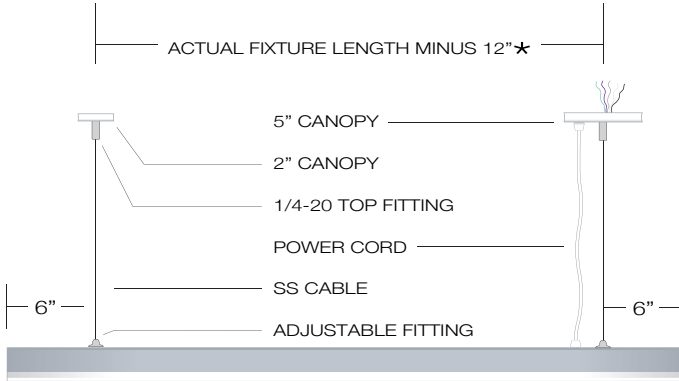
Higher lumen packages available.

PART NUMBER

SERIES	LUMENS	COLOR	VOLTS	MOUNTING	ENDCAP STYLE	OPTIONS	FINISH	LENGTH
LN2-FRL <small>FORMERLY ALX2-FRL</small>	L LOW	27K 2700K	UNV	<u>CABLE SUSPENDED</u>	<u>STANDARD ENDCAP</u>	MS MOTION SENSOR MSP BI-LEVEL MOTION SENSOR	S SATIN W WHITE C CUSTOM	2' 8' 3' 9' 4' 10' 5' 11' 6' 12' 7'
	M MEDIUM	3K 3000K	(120/277) 10% DIM	SK36 36" CABLE KIT SK48 48" CABLE KIT SK72 72" CABLE KIT	SEB BLANK ENDS SEK ONE END K/O SBEK BOTH ENDS K/O			
	H HIGH	35K 3500K		<u>SURFACE MOUNT</u>	<u>ARCHITECTURAL ENDCAP</u>	<u>EM PACKS</u>		
	CP CUSTOM PROGRAMMED (Specify Lumens/FT or Watts/FT)	4K 4000K	UNV 1% (120/277) 1% DIM	SM SURFACE MOUNT JBP J BOX PLATE	AEB BLANK ENDS	EM1 800 LUMEN EM2 1400 LUMEN		

MOUNTING

CABLE SUSPENDED

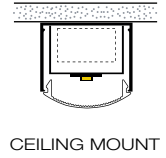
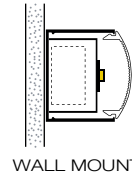


- SK36** 36" Suspension Kit
- SK48** 48" Suspension Kit
- SK72** 72" Suspension Kit
- Other cable lengths available.

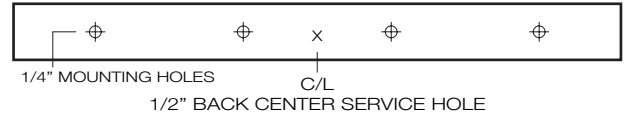
- Suspension Kit includes:
- (2) Top Fittings for 1/4-20 Rod
 - (2) Adjustable Bottom Fittings
 - (2) Aircraft Cables
 - (1) Prewired 18/5 White SVT Cord
 - (1) 5" White Canopy with Mounting Hardware
 - (1) 2" White Canopy

- *Custom pendant spacing available; consult factory
- *Lengths over 8' require center cable support
- *EM option includes 18/6 cord

SURFACE MOUNT

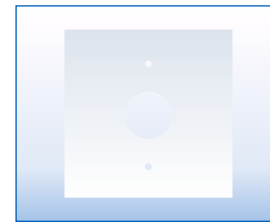


MOUNTING DETAILS



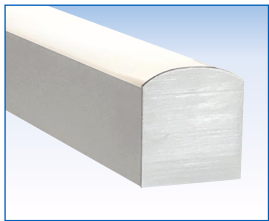
- 1/4" Mounting holes provided evenly spaced on back channel.
- 1/2" Back center service hole for snap-in connector provided for surface mount applications when using standard blank endcap or architectural endcap.
- 2' fixtures require off center service hole due to 12" driver

Note: Narrow housing will not cover recessed J Box. Whip feed recommended. Use optional "JBP" canopy plate for J-Box mount. (See Picture Below)

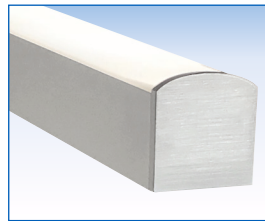


J-BOX PLATE
JBP 5" FLAT CANOPY PLATE
 TO COVER J-BOX

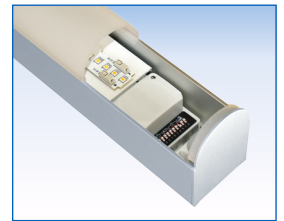
ENDCAP STYLES & SENSORS



STANDARD ENDCAP
K/O OPTIONS
SEB BLANK ENDS
SEK ONE END K/O
SBEK BOTH END K/O



ARCHITECTURAL ENDCAP
AEB BLANK ENDS
 3/16" PLATE ENDCAP

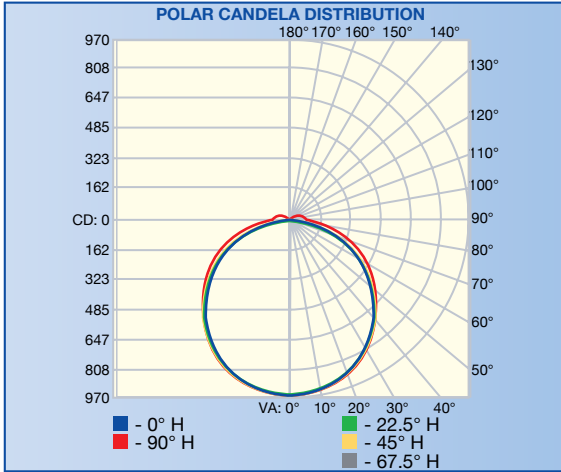


MOTION SENSOR
MS MOTION SENSOR
MSP BI-LEVEL MOTION SENSOR
 MOUNTS UNDER LENS; ADDS 3" TO FIXTURE

FIXTURE LENGTHS

NOMINAL LENGTH	2'	3'	4'	5'	6'	7'	8'	9'	10'	11'	12'
ACTUAL LENGTH	23"	34"	49"	56"	73"	89"	97"	111"	121"	133"	145"

PHOTOMETRICS / CANDELA DISTRIBUTION .IES files available online or by calling the factory.



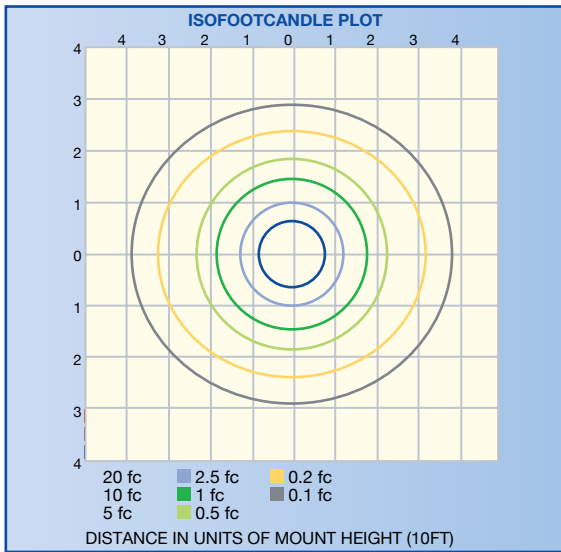
LN2 – FRL 2" FLAT ROUND LENS

POLAR GRAPH

REPORT NO.: 103499092LAX-003

Based on 4' linear fixture at medium lumens (35K 903L/FT x 4' = 3612L)

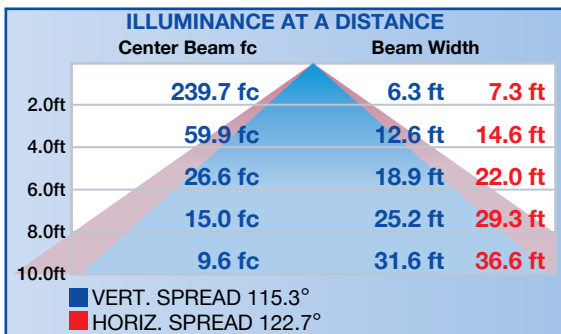
ISOILLUMINATION PLOT



ZONAL LUMENS & PERCENTAGES AT 25°C

ZONE	LUMENS	% LUMINAIRE
0-10	90.8	2.9
10-20	260.6	8.2
20-30	397.5	12.6
30-40	484.8	15.3
40-50	513.7	16.2
50-60	482.1	15.2
60-70	394.7	12.5
70-80	269.7	8.5
80-90	134.4	4.2
90-100	57.6	1.8
100-110	39.0	1.2
110-120	23.4	0.7
120-130	10.2	0.3
130-140	3.3	0.1
140-150	0.4	0.0

ILLUMINANCE – CONE OF LIGHT



ZONAL LUMEN SUMMARY & PERCENTAGES AT 25°C

ZONE	LUMENS	% LUMINAIRE
0-30	748.9	23.7
0-40	1234	39.0
0-60	2230	70.5
60-90	798.8	25.3
0-90	3028	95.8
90-180	134.0	4.2
0-180	3162	100.0