

CORNERSTONE W DL LED

Architectural Outdoor



PROJECT:	
TYPE:	
PO#:	QTY:
COMMENTS:	

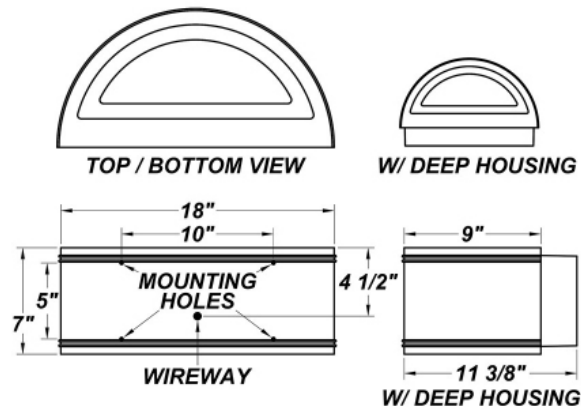
FEATURES

- Down Light Only
- Clear Tempered Glass Diffuser
- Constant Voltage Modules
- CSA Listed Wet Location
- Die-Cast Aluminum Housing w/ Textured Black Polyester Powder Coat Finish
- Emergency Battery Available (L16.0 Only)
- LED Light Fixture
- Mounts Direct to Flat Surface w/ Two #8 Wall Anchors (Not Included)
- Surge Protector
- Thermal Compensation Technology Ensures Longer LED Lifetime - Ideal For Fixtures Being Placed in Area w/ Fluctuating or Higher Ambient Temperatures



LINE DRAWING

LINE DRAWING NOT TO SCALE

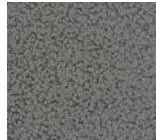


FINISHES

Antique Copper



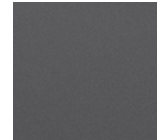
Antique Silver



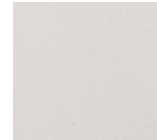
Bronze Mist



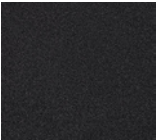
Matte Silver



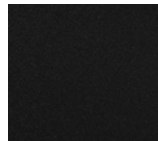
Sand



Swedish Steel



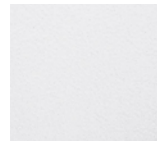
Textured Black



Textured Bronze



Textured White



For RAL Colors & Custom Match - Contact Teron Lighting Inc.

CORNERSTONE W DL LED

Architectural Outdoor



Fixture Core

PROJECT:	
TYPE:	
PO#:	QTY:
COMMENTS:	

PRODUCT CODE	SOURCE/WATTAGE	VOLTAGE	DIMMING DRIVER
CRNW-DL - Cornerstone W Down Light Only	L16.0-12CV - 16W @ 12V Constant Voltage Non-Dimming Driver L20.0-ZE12CV - 20W @ 12V Constant Voltage Non-Dimming Driver	120 - 277V	Not Applicable (0-10V Dimming)
ORDER INFO			
CRNW-DL	L16.0-12CV	120 - 277V	Not Applicable

Example ^ (may not represent a manufacturable product)

Aesthetics & Options

TRIM	FINISH	COLOR TEMP	OPTIONS
Not Applicable	AC - Antique Copper AS - Antique Silver BT - Bronze Mist SM - Matte Silver SN - Sand SW - Swedish Steel TB - Textured Black (Standard) BZ - Textured Bronze TW - Textured White	30K - 3000K Color Temp 35K - 3500K Color Temp 40K - 4000K Color Temp 50K - 5000K Color Temp	EB - Integral EM Battery (L16.0 Only) DH - Deep Housing PCL - Photocell
ORDER INFO			
Not Applicable	AC	30K	EB

Example ^ (may not represent a manufacturable product)

PROD	SOURCE	30K SPECS				
CRNW-DL	L16.0	<ul style="list-style-type: none"> 30K - 3000K Color Temp 1264 LED Source Lumens 79 LED Source Lumens Per Watt 1142.2 Delivered LED Lumens 71.4 Delivered LED Lumens Per Watt 				
	L20.0	<ul style="list-style-type: none"> 30K - 3000K Color Temp 1560 LED Source Lumens 78 LED Source Lumens Per Watt 1408 Delivered LED Lumens 70.4 Delivered LED Lumens Per Watt 				

REPLACEMENT PART	PART NO	NOTES
Black Glass Lens	3702824	
Clear Glass Lens	37028	

Don't see the configuration you are looking for?
Call us today at (513) 858-6004



TERONLIGHTING.COM
33 DONALD DR, FAIRFIELD, OH 45014
P: 513.858.6004 F: 513.858.6038
E: SALES@TERONLIGHT.COM



We reserve the right to revise the design components of any product due to parts availability or change in UL standards, without assuming any obligation or liability to modify any products previously manufactured, and without notice.

CORNERSTONE W DL LED

Architectural Outdoor



Fixture Core

PROJECT:	
TYPE:	
PO#:	QTY:
COMMENTS:	

PRODUCT CODE	SOURCE/WATTAGE	VOLTAGE	DIMMING DRIVER
CRNW-DL - Cornerstone W Down Light Only	L32.0-12CV - 32W @ 12V Constant Voltage Non-Dimming Driver	120 - 277V	Not Applicable
ORDER INFO			
CRNW-DL	L32.0-12CV	120 - 277V	Not Applicable

Example ^ (may not represent a manufacturable product)

Aesthetics & Options

TRIM	FINISH	COLOR TEMP	OPTIONS
Not Applicable	AC - Antique Copper AS - Antique Silver BT - Bronze Mist SM - Matte Silver SN - Sand SW - Swedish Steel TB - Textured Black (Standard) BZ - Textured Bronze TW - Textured White	30K - 3000K Color Temp 35K - 3500K Color Temp 40K - 4000K Color Temp 50K - 5000K Color Temp	DH - Deep Housing PCL - Photocell
ORDER INFO			
Not Applicable	AC	30K	DH

Example ^ (may not represent a manufacturable product)

PROD	SOURCE	30K SPECS				
CRNW-DL	L32.0-12CV	<ul style="list-style-type: none"> • 30K - 3000K Color Temp • 3289 LED Source Lumens • 102.8 LED Source Lumens Per Watt • 2284 Delivered LED Lumens • 71.4 Delivered LED Lumens Per Watt 				

REPLACEMENT PART	PART NO	NOTES
Black Glass Lens	3702824	
Clear Glass Lens	37028	

Don't see the configuration you are looking for?
Call us today at (513) 858-6004



TERONLIGHTING.COM
 33 DONALD DR, FAIRFIELD, OH 45014
 P: 513.858.6004 F: 513.858.6038
 E: SALES@TERONLIGHT.COM



We reserve the right to revise the design components of any product due to parts availability or change in UL standards, without assuming any obligation or liability to modify any products previously manufactured, and without notice.