

MIGHTY MAC™

WDU SERIES

PRODUCT FEATURES:

- » Surface wall mount – (6"×10")×26", (6"×10")×50"
- » Two apertures provide up and down light
- » TIG welded housing with no post grinding for additional strength
- » Vertically adjustable bracket secured to housing via thru-studs



PROJECT INFORMATION

Job Name _____

Fixture Type _____

Catalog Number _____

Approved by _____

SPECIFICATIONS

HOUSING: One-piece die-formed prime grade material as specified – see ordering information. Corners continuously seam welded and smooth with no post grinding (TIG).

LENS: As specified – maximum thickness .625" – see ordering information. Kenall recommends a prismatic inner lens and a clear outer lens. Two clear lenses used in combination cannot be provided.

LENS RETENTION: Vertically adjustable continuous "Z" brackets of prime grade material, secured to housing via thru-studs (6" maximum spacing).

DOOR: One-piece die-formed prime grade material as specified – see ordering information.

HINGE: Staked and welded external piano hinge (1/2" knuckle/1/8" diameter pin) standard. See Options for Internal Hinge (IH) and Full Length Internal Hinge (IHF).

FASTENERS: Hardened security screws as specified – see ordering information. Fully recessed.

FINISH: TGIC polyester powder coat – 5-stage pre-treatment. Salt spray test: 1,000 hours; Reflectance: 92%.

LAMPS: Quantity and type as specified – see ordering information. Lamps supplied by others.

BALLAST: Quantity and type as specified – see ordering information. All ballasts UL listed class P.

LUMINOUS SEAL: Polyurethane foam prevents light leaks from luminaire base.

PHOTOMETRICS: Efficiency of WDU4-0/0-232-IS-1-120-1/7-1 = 60.3%. For photometric information, go to www.kenall.com.

WARRANTY: One (1) year warranty for Kenall fluorescent products.

LISTINGS: UL and CUL listed for damp locations.



ORDERING INFORMATION (Ex: WDU-2-0/0-2-17-RS-1-120- 1/B-1)

Model	Size	Hsg./Base Plate	Lamp Qty	Lamp Type	Ballast Type	Ballast Qty	Voltage	Lens (Inner/Outer)	Fasteners	Options
WDU	/							/		
Nominal Size		Lamp Type		Lens (Inner/Outer)‡		Options				
2	(6"×10")×26"	2'	Nominal Length	0	No Lens	EL	Standard Lumen EL Pack			
4	(6"×10")×50"	17	F17T8	1	.125" Prismatic Acrylic	PEL	High Lumen EL Pack			
Housing/Door Material		4' Nominal Length		2	.125" Prismatic Polycarbonate	SEL	Specified EL Pack			
0	14-Ga CRS (Painted White)	32	F32T8	3	.125" Textured Polycarbonate	DLN	LED Night Light w/Light Level Control (100% - 20%. Voltage specific selection required)			
1	16-Ga CRS (Painted White)	Ballast Type		G	.125" Clear Polycarbonate	FS	Single Fuse & Holder			
2	18-Ga CRS (Painted White)	IS	Instant Start Electronic <10% THD (T8)	4	.156" Prismatic Polycarbonate	IH	Internal Hinge			
3	14-Ga SS (Painted White)	RS	Rapid Start Electronic <10% THD (CFL, T8)	TG	.156" Textured Tempered Glass	IHF	Full Length Internal Hinge			
4	16-Ga SS (Painted White)	Ballast Quantity		6	.187" Prismatic Polycarbonate	PSL♦	Push Switch – Left side (as viewed facing fixture)			
6	14-Ga SS (Brushed)	1	One	7	.187" Clear Polycarbonate	PSR♦	Push Switch – Right side (as viewed facing fixture)			
7	16-Ga SS (Brushed)	Voltage		8	.187" Clear Tempered Glass	RGT	Removable Gear Tray			
Lamp Quantity		120	120 Volts	9	.250" Clear Polycarbonate	TCL♦	Touch Control Switch – Left side (as viewed facing fixture)			
1	One	277	277 Volts	A	.250" Clear Tempered Glass	TCR♦	Touch Control Switch – Right side (as viewed facing fixture)			
2	Two	347	347 Volts	B	.375" Clear Polycarbonate	TN	PL Night Light – 5/7/9 Watt (Lamp supplied by others; 120/277V specific selection required)			
				C	.375" Clear Tempered Glass	UV	Ultraviolet Filter			
				J	.500" Clear Polycarbonate					
				P	.500" Clear Tempered Glass					
				Fastener						
				1	Torx® Head w/ Center Pin					
				2	Allen Head w/ Center Pin					

‡ Refer to lens specifications
♦ n/a with 347V



www.kenall.com | P: 800-4-Kenall | F: 262-891-9701 | 10200 55th Street Kenosha, Wisconsin 53144, USA

A brand of **legrand**

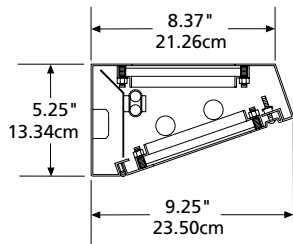
This product complies with the Buy American Act: manufactured in the United States with more than 50% of the component cost of US origin. It may be covered by patents found at www.kenall.com/patents. Content of specification sheets is subject to change; please consult www.kenall.com for current product details. ©2019 Kenall Mfg. Co.

MIGHTY MAC™

WDU SERIES

DIMENSIONAL DATA

CROSS SECTION



MOUNTING HOLES

