

ORDERING CODE

ANGC1L

CCH1A

MVOLT

PROJECT INFO

TYPE

DATE

QUANTITY

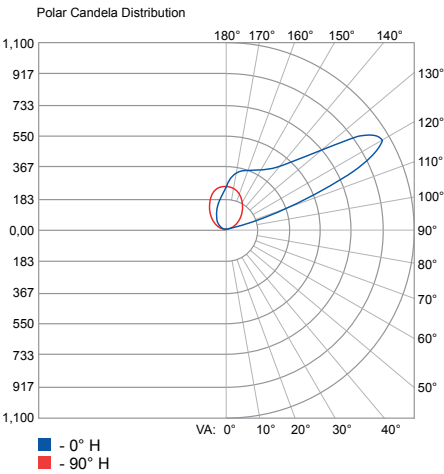
| CCH1A Linear Cantilever Mount | | | | | |
|-------------------------------|---------------|--------|--------|-------------|---------|
| NOMINAL LENGTH | ACTUAL LENGTH | SOURCE | LUMENS | INPUT WATTS | WEIGHT |
| 2FT | 27.50" | AL1AN1 | 1118 | 10w | 12 lbs. |
| | | AL1AH1 | 2243 | 22w | |
| 3FT | 38.94" | AL1AN1 | 1668 | 15w | 16 lbs. |
| | | AL1AH1 | 3349 | 33w | |
| 4FT | 50.31" | AL1AN1 | 2332 | 20w | 20 lbs. |
| | | AL1AH1 | 4443 | 41w | |

Example: ANG1L LSL 20FT MSL4 CSH1A INT AL1NA1 30K MVOLT N100 CA SGW

| ANGC1L | | | | CCH1A | | | | | | | | | |
|---|--|-----------------------------|-------------------------|------------------|----------------------|-----------------|--|-----------------|---------------------|--------|--------------------------------|-----|-----------|
| SERIES | | LINEAR PLAN | | TOTAL RUN LENGTH | MAX SELECTION LENGTH | MOUNT ACCESSORY | ENVIRONMENT | SOURCE | LED CCT | | | | |
| ANGC1L | Asymmetric LED Linear Cantilever Mount | LSL | Linear Same Length | FT | MSL2 | 2FT Length | CCH1A Continuous Mount Cantilever Hub Assembly | INT | Interior Location | AL1AN1 | Asymmetric LED Normal Output 1 | 30K | 3000K CCT |
| | | LCB | Linear Center Balanced | | MSL3 | 3FT Length | | WL ² | Wet Location | | | 35K | 3500K CCT |
| | | LLP | Linear Longest Possible | | MSL4 | 4FT Length | | NT ² | Natatorium Location | AL1AH1 | Asymmetric LED High Output 1 | 40K | 4000K CCT |
| | | See page 2 for descriptions | | | | | | | | | | | |
| 2 Top gasketed lens assembly automatically included with WL or NT selection | | | | | | | | | | | | | |

| | | MVOLT | | | | | | | | | |
|---------|--|------------------------------|--|----------------------------|--|------------------|--|-------------------------------------|--|---------------------------------------|--|
| LED CRI | | VOLTAGE | | ELECTRICAL OPTION | | LENS | | | | | |
| 80+ CRI | | Multi Volt 120V thru 277V | | N100 nLight Enabled Module | | CA Clear Acrylic | | SGW Semi-Gloss White | | MOD Modification (consult factory) | |
| 90+ CRI | | | | (blank) None | | (blank) None | | SGB Semi-Gloss Black | | | |
| | | | | | | | | ALP Aluminum Paint (matte) | | | |
| | | | | | | | | CPF ² Custom Paint Finsh | | | |
| | | | | | | | | | | | |
| | | | | | | | | | | | |
| | | | | | | | | | | | |
| | | | | | | | | | | | |
| | | | | | | | | | | | |
| | | | | | | | | | | | |
| | | | | | | | | | | | |
| | | | | | | | | | | | |
| | | | | | | | | | | | |
| | | | | | | | | | | | |
| | | | | | | | | | | | |
| | | | | | | | | | | | |
| | | | | | | | | | | | |
| | | | | | | | | | | | |
| | | | | | | | | | | | |
| | | | | | | | | | | | |
| | | | | | | | | | | | |
| | | | | | | | | | | | |
| | | | | | | | | | | | |
| | | | | | | | | | | | |
| | | | | | | | | | | | |
| | | | | | | | | | | | |
| | | | | | | | | | | | |
| | | | | | | | | | | | |
| | | | | | | | | | | | |
| | | | | | | | | | | | |
| | | | | | | | | | | | |
| | | | | | | | | | | | |
| | | | | | | | | | | | |
| | | | | | | | | | | | |
| | | | | | | | | | | | |
| | | | | | | | | | | | |
| | | | | | | | | | | | |
| | | | | | | | | | | | |
| | | | | | | | | | | | |
| | | | | | | | | | | | |
| | | | | | | | | | | | |
| | | | | | | | | | | | |
| | | | | | | | | | | | |
| | | | | | | | | | | | |
| | | | | | | | | | | | |
| | | | | | | | | | | | |
| | | | | | | | | | | | |
| | | | | | | | | | | | |
| | | | | | | | | | | | |
| | | | | | | | | | | | |
| | | | | | | | | | | | |
| | | | | | | | | | | | |
| | | | | | | | | | | | |
| | | | | | | | | | | | |
| | | | | | | | | | | | |
| | | | | | | | | | | | |
| | | | | | | | | | | | |
| | | | | | | | | | | | |
| | | | | | | | | | | | |
| | | | | | | | | | | | |
| | | | | | | | | | | | |
| | | | | | | | | | | | |
| | | | | | | | | | | | |
| | | | | | | | | | | | |
| | | | | | | | | | | | |
| | | | | | | | | | | | |
| | | | | | | | | | | | |
| | | | | | | | | | | | |
| | | | | | | | | | | | |
| | | | | | | | | | | | |
| | | | | | | | | | | | |
| | | | | | | | | | | | |
| | | | | | | | | | | | |
| | | | | | | | | | | | |
| | | | | | | | | | | | |
| | | | | | | | | | | | |
| | | | | | | | | | | | |
| | | | | | | | | | | | |
| | | | | | | | | | | | |
| | | | | | | | | | | | |
| | | | | | | | | | | | |
| | | | | | | | | | | | |
| | | | | | | | | | | | |
| | | | | | | | | | | | |
| | | | | | | | | | | | |
| | | | | | | | | | | | |
| | | | | | | | | | | | |
| | | | | | | | | | | | |
| | | | | | | | | | | | |
| | | | | | | | | | | | |

CLEAR LENS



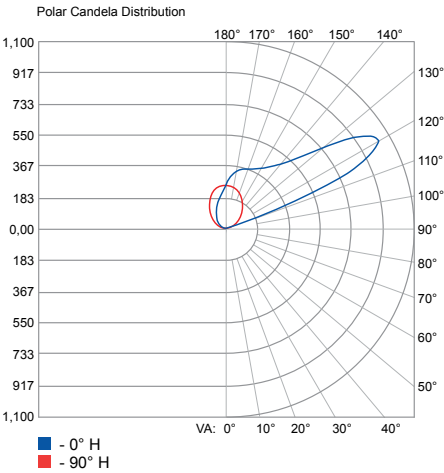
Test Report: **ISF35341 (PRORATED)**
IES LM 79-08
ANGC1L INT 48LONG 30K HIGH (clear lens)

Lumens: **4443**
Wattage: **41W**
Efficacy: **108.3**
Max. Candela: **4185**
CRI: **81.9**

| Zonal Lumen Summary | | |
|---------------------|--------|-------------|
| Zone | Lumen | % Luminaire |
| 70-100 | 24.2 | 0.5% |
| 90-120 | 1361.5 | 30.6% |
| 90-180 | 4425.1 | 99.6% |
| 0-180 | 4443 | 100.0% |

| Angle | Candlepower Distribution | | | | |
|-------|--------------------------|------|------|------|------|
| | Plane | | | | |
| | 0 | 45 | 90 | 135 | 180 |
| 0 | 4 | 4 | 4 | 4 | 4 |
| 30 | 0 | 4 | 8 | 4 | 0 |
| 60 | 0 | 4 | 8 | 4 | 4 |
| 80 | 0 | 8 | 12 | 4 | 0 |
| 90 | 0 | 4 | 8 | 0 | 0 |
| 100 | 8 | 151 | 52 | 28 | 28 |
| 105 | 171 | 831 | 111 | 64 | 52 |
| 110 | 1602 | 1892 | 179 | 107 | 91 |
| 115 | 3263 | 2416 | 250 | 159 | 139 |
| 120 | 4185 | 2086 | 322 | 207 | 183 |
| 125 | 3787 | 1637 | 385 | 258 | 223 |
| 130 | 2941 | 1395 | 453 | 310 | 262 |
| 135 | 2305 | 1311 | 525 | 362 | 310 |
| 140 | 1931 | 1296 | 588 | 409 | 358 |
| 145 | 1741 | 1303 | 656 | 457 | 405 |
| 150 | 1617 | 1323 | 735 | 513 | 457 |
| 160 | 1474 | 1331 | 874 | 660 | 596 |
| 170 | 1347 | 1248 | 970 | 819 | 771 |
| 180 | 1029 | 1029 | 1029 | 1029 | 1029 |

WET LOCATION

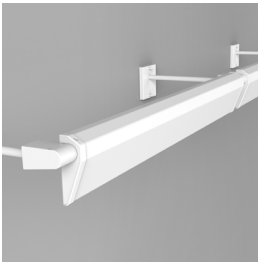


Test Report: **ISF35340 (PRORATED)**
IES LM 79-08
ANGC1L WL 48LONG 30K HIGH (wet location)

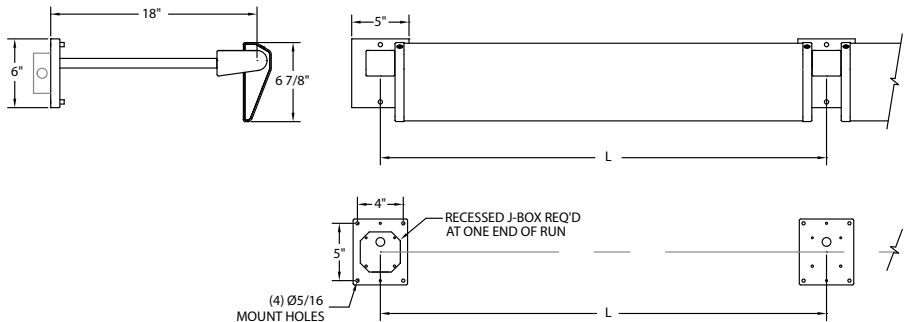
Lumens: **4359**
Wattage: **41W**
Efficacy: **106.3**
Max. Candela: **4109**
CRI: **81.9**

| Zonal Lumen Summary | | |
|---------------------|--------|-------------|
| Zone | Lumen | % Luminaire |
| 70-100 | 24.2 | 0.6% |
| 90-120 | 1256.4 | 28.8% |
| 90-180 | 4340.7 | 99.6% |
| 0-180 | 4359 | 100.0% |

| Angle | Candlepower Distribution | | | | |
|-------|--------------------------|------|------|------|------|
| | Plane | | | | |
| | 0 | 45 | 90 | 135 | 180 |
| 0 | 4 | 4 | 4 | 4 | 4 |
| 30 | 0 | 4 | 8 | 4 | 0 |
| 60 | 0 | 8 | 8 | 4 | 0 |
| 80 | 0 | 8 | 8 | 4 | 0 |
| 90 | 0 | 4 | 8 | 4 | 0 |
| 100 | 4 | 16 | 52 | 48 | 44 |
| 105 | 20 | 707 | 107 | 83 | 75 |
| 110 | 644 | 1804 | 183 | 131 | 119 |
| 115 | 3199 | 2301 | 254 | 175 | 163 |
| 120 | 4109 | 2023 | 322 | 226 | 211 |
| 125 | 3751 | 1589 | 389 | 278 | 246 |
| 130 | 2917 | 1387 | 461 | 326 | 290 |
| 135 | 2293 | 1315 | 528 | 377 | 334 |
| 140 | 1963 | 1291 | 596 | 425 | 385 |
| 145 | 1756 | 1299 | 668 | 473 | 429 |
| 150 | 1621 | 1319 | 735 | 532 | 477 |
| 160 | 1486 | 1339 | 882 | 676 | 612 |
| 170 | 1363 | 1256 | 981 | 834 | 795 |
| 180 | 1041 | 1041 | 1041 | 1041 | 1041 |



| CCH1A Continuous Cantilever Mount Hub |
|---|
| Length Chart |
| 2FT = 27.5" |
| 3FT = 38.94" |
| 4FT = 50.31" |



IES data is available at www.alights.com. Always refer to our website for the latest IES files updates.

LINEAR PLAN

A.light offers the ability to provide a continuous run plan to suit your requirements by optionally offering three methods of configuration.

LSL LINEAR SAME LENGTH:

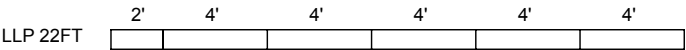
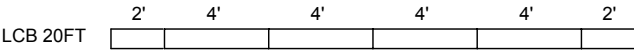
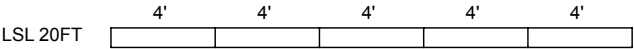
In this configuration each segment is the same length is standardized based on the longest length available and is the only option provided. Because it is dependent on one segment length there are mathematical limitations on what overall row lengths can be achieved. Example: 20FT row would be achieved with (5) 4FT long segments equaling 20FT (nominal).

LCB LINEAR CENTER BALANCED:

This configuration incorporates the longest center segment(s) along with any additional lengths required to fill located at each end. Example: 20FT row would have (2) 2FT segments (one at each end) and (4) 4FT intermediate segments located in between.

LLP LINEAR LONGEST POSSIBLE:

In this plan the longest length available is optimized resulting in the fewest segments and mounting locations. Caution should be used where balanced appearance is a concern. Example: 22FT row would have (5) 4FT segments and (1) 2FT segment located at one end.



CONSTRUCTION

Extruded aluminum housing, optional clear acrylic lens, die-cast end caps with stainless steel hardware.

SOURCE

LED lumen packages provide high performance asymmetric distribution in 3000K, 3500K or 4000K color temperature options. Components are designed to be serviceable and replaceable.

L80 >60,000 hours at 25C ambient temperature.

OPTICS

Advanced asymmetric optical system optimized for LED source and arrayed for specific lumen output and distribution.

FINISH

6 stage pre-treated polyester powder coat painted finish. All hardware is stainless steel.

ELECTRICAL

LED light engine consists of modular LED boards and 0-10V dimming driver rated for 50,000 hours at 25°C ambient temperature, wattage is dependent on luminaire output. eldoLED solodrive power supply integrally mounted. Boards and drivers are modular for replacement or service. Compatible with the following Acuity Controls: nLight nPS 80 EZ and LC&D MicroPanel.

CONTROLS

Optional intelligence allows for constant lumen management and facilitates simple networking and control via CAT-5e cable. nLight components are provided as accessories for remote field installation.

ENVIRONMENT

UL and cUL listed for interior dry or wet location use. Optional Natatorium Construction (NT). Ambient operating temperature -20°C to 35°C.

A+ CAPABLE LUMINAIRE

This item is an A+ capable luminaire, which has been designed and tested to provide consistent color appearance and out-of-the-box control compatibility with simple commissioning.

- All configurations of this luminaire meet the Acuity Brands' specification for chromatic consistency
- This luminaire is part of an A+ Certified solution for nLight® control networks when ordered with drivers marked by a shaded background*
- This luminaire is part of an A+ Certified solution for nLight control networks, providing advanced control functionality at the luminaire level, when selection includes driver and control options marked by a shaded background*

To learn more about A+, visit www.acuitybrands.com/aplus.

*See ordering tree for details

WARRANTY

Limited defect-free manufactured equipment warranty provided under normal use and proper storage for a period of one (1) year. LED products (LED boards and drivers) will be covered for a period of five (5) years. Wet location fixtures are not recommended for extreme wet weather conditions and must be installed according to factory drawings; there is a modified warranty for LED components installed in applications not in accordance with factory recommendations/drawings. Please refer to full terms and conditions on our website.