

ORDERING CODE

ANGWC1L

MVOLT

PROJECT INFO

TYPE

DATE

QUANTITY

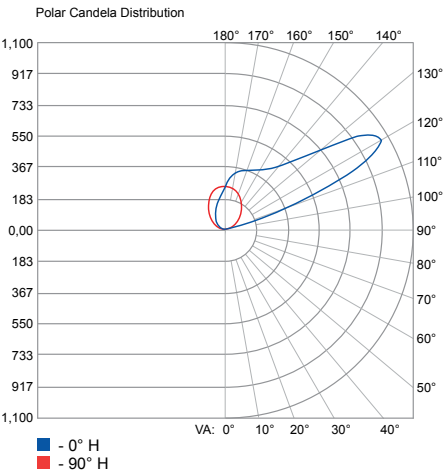
CSH1A / CSC1A Surface Linear Wall / Ceiling Mount					
NOMINAL LENGTH	ACTUAL LENGTH / SSY1	SOURCE	LUMENS	INPUT WATTS	WEIGHT
2FT	27.50" / 25.88"	AL1AN1	1118	10w	10 lbs.
		AL1AH1	2243	22w	
3FT	38.94" / 37.31"	AL1AN1	1668	15w	14 lbs.
		AL1AH1	3349	32w	
4FT	50.31" / 48.68"	AL1AN1	2332	20w	18 lbs.
		AL1AH1	4443	41w	

Example: ANGWC1L LSL 20FT MSL4 CSH1A INT AL1NA1 30K MVOLT N100 CA SGW

ANGWC1L							
SERIES	LINEAR PLAN	TOTAL RUN LENGTH	MAX	MOUNT ACCESSORY	ENVIRONMENT	SOURCE	LED CCT
ANGWC1L Asymmetric LED Linear Surface Wall/Ceiling Mount	LSL Linear Same Length	FT	MSL2 2FT Length	CSC1A Continuous Surface Mount Conduit Feed Assembly	INT Interior Location	AL1AN1 Asymmetric LED Normal Output 1	30K 3000K CCT
	LCB Linear Center Balanced		MSL3 3FT Length		WL ^{1,3} Wet Location		35K 3500K CCT
	LLP Linear Longest Possible		MSL4 4FT Length	CSH1A Continuous Surface Mount Hub Assembly	NT ^{1,3} Natatorium Construction	AL1AH1 Asymmetric LED High Output 1	40K 4000K CCT
See page 2 for descriptions					¹ 8FT not available for wet or natatorium location use. ³ Top gasketed lens assembly automatically included with WL selection.		

		MVOLT									
LED CRI		VOLTAGE		ELECTRICAL OPTION		LENS		FINISH		SPECIAL	
— 80+ CRI		MVOLT	Multi Volt 120V thru 277V	N100	nLight Enabled Module	CA	Clear Acrylic (blank) None	SGW	Semi-Gloss White	MOD	Modification (consult factory)
90 CRI 90+ CRI				(blank)	None			SGB	Semi-Gloss Black		
								ALP	Aluminum Paint (matte)		
								CPF ²	Custom Paint Finish		
						For use with INT option only		2 For custom finish specify MOD.			

CLEAR LENS



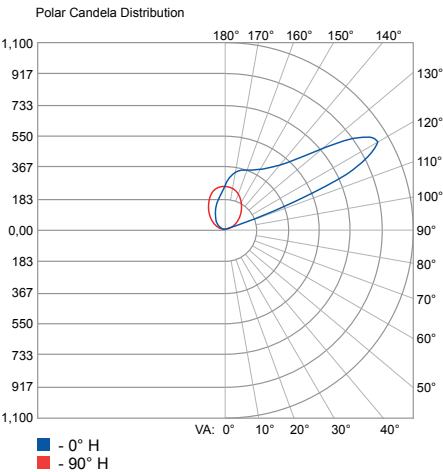
Test Report: **ISF35341 (PRORATED)**
IES LM 79-08
ANGWC1L INT 48LONG 30K HIGH (clear lens)

Lumens: **4443**
Wattage: **41W**
Efficacy: **108.3**
Max. Candela: **4185**
CRI: **81.9**

Zonal Lumen Summary		
Zone	Lumen	% Luminaire
70-100	24.2	0.5%
90-120	1361.5	30.6%
90-180	4425.1	99.6%
0-180	4443	100.0%

Angle	Candlepower Distribution				
	Plane				
	0	45	90	135	180
0	4	4	4	4	4
30	0	4	8	4	0
60	0	4	8	4	4
80	0	8	12	4	0
90	0	4	8	0	0
100	8	151	52	28	28
105	171	831	111	64	52
110	1602	1892	179	107	91
115	3263	2416	250	159	139
120	4185	2086	322	207	183
125	3787	1637	385	258	223
130	2941	1395	453	310	262
135	2305	1311	525	362	310
140	1931	1296	588	409	358
145	1741	1303	656	457	405
150	1617	1323	735	513	457
160	1474	1331	874	660	596
170	1347	1248	970	819	771
180	1029	1029	1029	1029	1029

WET LOCATION



Test Report: **ISF35340 (PRORATED)**
IES LM 79-08
ANGWC1L WL 48LONG 30K HIGH (wet location)

Lumens: **4359**
Wattage: **41W**
Efficacy: **106.3**
Max. Candela: **4109**
CRI: **81.9**

Zonal Lumen Summary		
Zone	Lumen	% Luminaire
70-100	24.2	0.6%
90-120	1256.4	28.8%
90-180	4340.7	99.6%
0-180	4359	100.0%

Angle	Candlepower Distribution				
	Plane				
	0	45	90	135	180
0	4	4	4	4	4
30	0	4	8	4	0
60	0	8	8	4	0
80	0	8	8	4	0
90	0	4	8	4	0
100	4	16	52	48	44
105	20	707	107	83	75
110	644	1804	183	131	119
115	3199	2301	254	175	163
120	4109	2023	322	226	211
125	3751	1589	389	278	246
130	2917	1387	461	326	290
135	2293	1315	528	377	334
140	1963	1291	596	425	385
145	1756	1299	668	473	429
150	1621	1319	735	532	477
160	1486	1339	882	676	612
170	1363	1256	981	834	795
180	1041	1041	1041	1041	1041

IES data is available at www.alights.com. Always refer to our website for the latest IES files updates.

LINEAR PLAN

A.light offers the ability to provide a continuous run plan to suit your requirements by optionally offering three methods of configuration.

LSL LINEAR SAME LENGTH:

In this configuration each segment is the same length is standardized based on the longest length available and is the only option provided. Because it is dependent on one segment length there are mathematical limitations on what overall row lengths can be achieved. Example: 40FT row would be achieved with (10) 4FT long segments equaling 40FT (nominal).

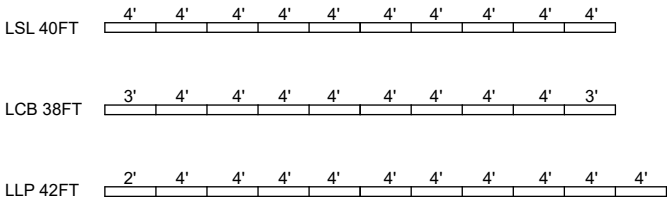
LCB LINEAR CENTER BALANCED:

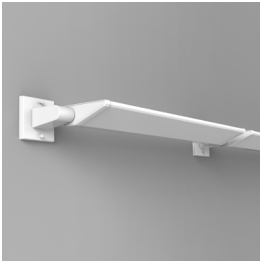
This configuration incorporates the longest center segment(s) along with any additional lengths required to fill located at each end. Example: 38FT row would have (2) 3FT segments (one at each end) and (8) 4FT intermediate

segments located in between.

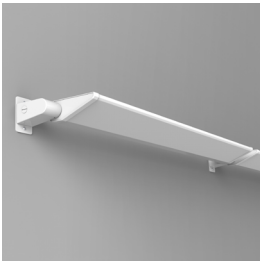
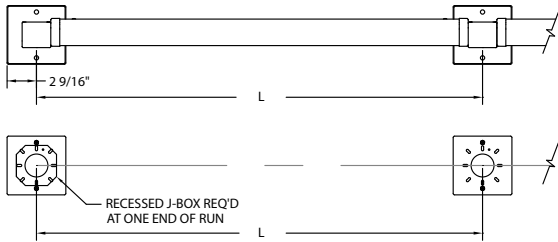
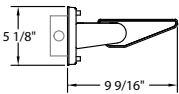
LLP LINEAR LONGEST POSSIBLE:

In this plan the longest length available is optimized resulting in the fewest segments and mounting locations. Caution should be used where balanced appearance is a concern. Example: 42FT row would have (10) 4FT segments and (1) 2FT segment located at one end.

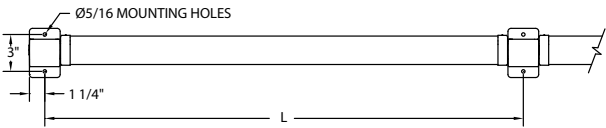
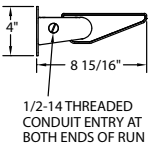




CSH1A Continuous Surface Mount Hub
Length Chart
2FT = 27.5"
3FT = 38.94"
4FT = 50.31"



CSC1A Continuous Surface Mount Conduit Feed
Length Chart
2FT = 27.5"
3FT = 38.94"
4FT = 50.31"



CONSTRUCTION

Extruded aluminum housing, optional clear acrylic lens, die-cast end caps with stainless steel hardware.

SOURCE

LED lumen packages provide high performance asymmetric distribution in 3000K, 3500K or 4000K color temperature options. Components are designed to be serviceable and replaceable.

L80 >60,000 hours at 25C ambient temperature.

OPTICS

Advanced asymmetric optical system optimized for LED source and arrayed for specific lumen output and distribution.

FINISH

6 stage pre-treated polyester powder coat painted finish. All hardware is stainless steel.

ELECTRICAL

LED light engine consists of modular LED boards and 0-10V dimming driver rated for 50,000 hours at 25°C ambient temperature, wattage is dependent on luminaire output. eldoLED solodrive power supply integrally mounted. Boards and drivers are modular for replacement or service. Compatible with the following Acuity Controls: nLight nPS 80 EZ and LC&D MicroPanel.

CONTROLS

Optional intelligence allows for constant lumen management and facilitates simple networking and control via CAT-5e cable. nLight components are provided as accessories for remote field installation.

ENVIRONMENT

UL and cUL listed for interior dry or wet location use; optional natatorium construction (NT). Ambient operating temperature -20°C to 35°C.

A+ CAPABLE LUMINAIRE

This item is an A+ capable luminaire, which has been designed and tested to provide consistent color appearance and out-of-the-box control compatibility with simple commissioning.

- All configurations of this luminaire meet the Acuity Brands' specification for chromatic consistency
- This luminaire is part of an A+ Certified solution for nLight® control networks when ordered with drivers marked by a shaded background*
- This luminaire is part of an A+ Certified solution for nLight control networks, providing advanced control functionality at the luminaire level, when selection includes driver and control options marked by a shaded background*

To learn more about A+, visit www.acuitybrands.com/aplus.

*See ordering tree for details

WARRANTY

Limited defect-free manufactured equipment warranty provided under normal use and proper storage for a period of one (1) year. LED products (LED boards and drivers) will be covered for a period of five (5) years. Wet location fixtures are not recommended for extreme wet weather conditions and must be installed according to factory drawings; there is a modified warranty for LED components installed in applications not in accordance with factory recommendations/drawings. Please refer to full terms and conditions on our website.