



6" LED RECESSED MODULE NEW CONSTRUCTION 1100LM 0-10V DIMMING

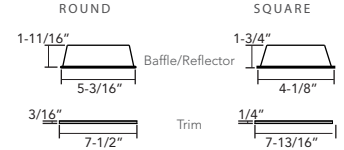
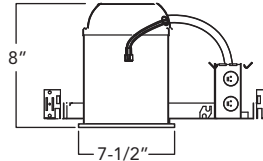
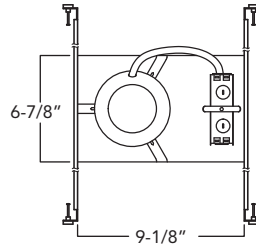
PROJECT:

MODEL #:

LOCATION:

CONTACT:

DIMENSIONS



Use of Product

The Versatrim RFL6 Series is the ideal product for energy efficient lighting in existing, remodel, or new construction housings. This product may be used in hospitality, health care, commercial, retail, and residential applications. The Versatrim will reduce energy consumption, emits little heat, and reduces cooling loads for added costs savings. Approximately 75% in energy savings compared to incandescent light source.

Versatrim Features

- Watts: 12.5W
- Lumens: 1100 Lumens
- Voltage: (120V standard); 120-277V (with optional 0-10V dimming driver)
- Color Temperature: 2700K, 3000K, 3500K, or 4000K
- Color Rendering Index: 93+ CRI Typical
- SDCM: 2 Step binning
- R9 Value: 85
- LED Life: 50,000 hours
- LED Type: Cree LED for maximum light output
- Versatility: Interchangeable baffle, reflector, and trim in round and square.
- EM Battery: 90 min, 800 delivered lumens.
- Warranty: 5 Year Limited Warranty
- Wet Location Certified

LED Driver

Durable 120-277V dimmable driver provides high power factor with the optimum thermal management to prevent damage caused by high temperature. Driver protections include: output open load, over-current and short circuit, and over temperature with auto recovery.

Emergency Battery

Optional emergency back-up may be ordered separately. Unit operates for 90 minutes with LED modules up to 20 Watts and is Damp location rated , 120/277AC operational, 800 delivered lumens.

Dimming

Available in 8 driver selections. Standard Triac/ELV, 120. (011) 0-10V dimming in 1100 lumens, 120-277V. (PEQ0) Lutron Hi-Lume Premier Ecosystem 0.1% w/soft on, fade to black dimming, 120-277V. (LDE1) Lutron Hi-Lume 1% Ecosystem with soft on, fade to black dimming, 120-277V. (L3DA) Hi-lume 1% EcoSystem/3-Wire L3D Driver (LTE) Hi-Lume 1% 2-wire, 120V (EEI) eldoLED Eco 1% Dim (0-10V), 120-277V. (EDIO) eldoLED Solo 0.1% Dim(0-10V), 120-277V. (EDID) eldoLED Solo 0.1% Dim(DALI), 120-277V.

Module Mechanics

The RFL6 Series is constructed of durable heat sink, baffle or reflector, trim ring, diffused lens and Cree LEDs for optimum performance. Interchangeable round or square baffle, reflector, and trim ring are designed for convenient color selection and replacement in the field. Diffused, lens provides for even light output, glare control, and conceals LEDs from view.

Housing Construction

- Minimum Clearance "IC" or insulated ceiling housings are rated for direct contact with insulation. No minimum clearance is required.
- Ceiling Thickness: Up to 1 1/4"
- Bar Hangers: Bar Hangers are adjustable from 13-5/8" to 25" and can be repositioned to 90°.

- Junction Box: Junction box is listed for through branch circuit wiring and contains seven 7/8 knockouts and four ROMEX pryouts with strain relief.
- Plaster Frame: Galvanized steel construction

Labels/Compliance

- CSA Classified for wet location
- LM79 and LM80
- Can be used for state of California Title 24 compliance
- JA8 certified

ORDERING INFO

RHL6-ICAT

RFL6

11L

Series

Module

Lumens

Color Temp.

Dimming

Baffle

or

Reflector

Trim

RHL6-ICAT - 6" IC Air-Tight LED Housing

RFL6

11L - 1100 Lumens (120V)

27 - 2700K

30 - 3000K

35 - 3500K

40 - 4000K

Leave blank - Triac/ELV

011 - 0-10V Dimming (1100 lumen)

LDE1 - Lutron Hi-Lume 1% Ecosystem with soft on, fade to black dimming

PEQ0 - Lutron Hi-Lume Premier Ecosystem 0.1% w/soft on, fade to black dimming

LTE¹ - Hi-Lume 1% 2-wire

L3DA - Hi-Lume 1% EcoSystem/3-Wire L3D Driver

EEI² - eldoLED Eco 1% Dim (0-10V)

EDIO² - eldoLED Solo 0.1% Dim (0-10V)

EDID² - eldoLED Solo 0.1% Dim (DALI)

ROUND

6BLW - White

6BLSN - Satin Nickel

6BLC - Copper

6BLB - Black

6BLBZ - Bronze

6RLCH - Chrome

6RLSN - Satin Nickel

6RLC - Copper

6RLB - Black

6RLBZ - Bronze

6RLH - Haze

6RLCX - Custom

6TLW - White

6TLSN - Satin Nickel

6TLC - Copper

6TLB - Black

6TLBZ - Bronze

6TLH - Haze

6TLCX - Custom

SQUARE

6SBLW - White

6SBLB - Black

6SRLH - Haze

6SRLSN - Satin Nickel

6SRLCH - Chrome

6SRLBZ - Bronze

6SRLCX - Custom

6SRLW - White

6SRLB - Black

6SRLH - Haze

6SRLSN - Satin Nickel

6SRLCH - Chrome

6SRLBZ - Bronze

6SRLCX - Custom

6STLW - White

6STLB - Black

6STLH - Haze

6STLSN - Satin Nickel

6STLBZ - Bronze

6STLCX - Custom

Options

347SDT - 347V Step down Transformer

EM - Emergency Back-up

1. 120V only.

2. Must specify logarithmic or linear eldoLED driver.



www.rayonlighting.com

info@rayonlighting.com

tel: 323.446.2626

fax: 323.446.2606

Specification and product availability
subject to change without notice

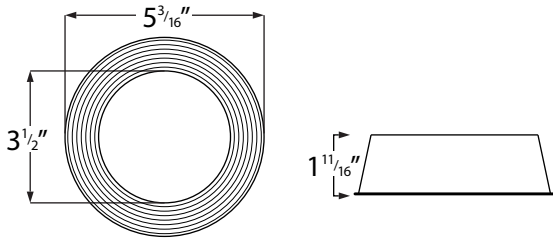
10/20

0-10V DIMMING

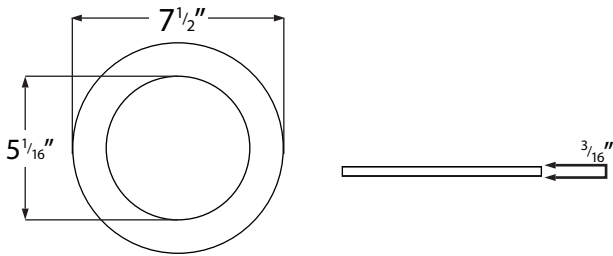
BAFFLE, REFLECTOR AND TRIM DIMENSIONS

Round

Baffle/Reflector

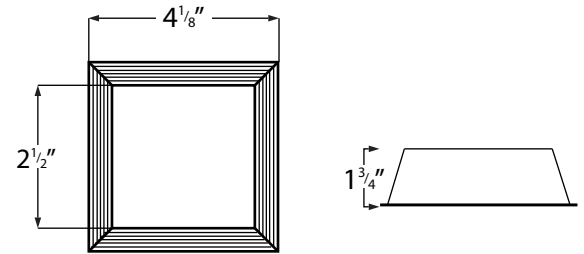


Trim



Square

Baffle/Reflector



Trim

