



# 6" LED RECESSED MODULE NEW CONSTRUCTION 800LM 0-10V DIMMING

**PROJECT:** \_\_\_\_\_

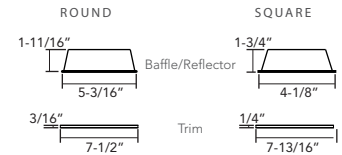
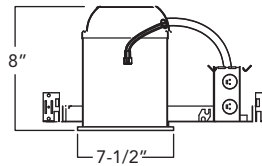
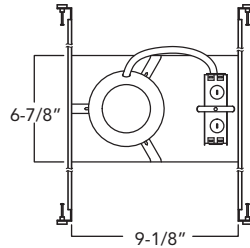
**MODEL #:** \_\_\_\_\_

**LOCATION:** \_\_\_\_\_

**CONTACT:** \_\_\_\_\_



## DIMENSIONS



### Use of Product

The Versatrim RFL6 Series is the ideal product for energy efficient lighting in existing, remodel, or new construction housings. This product may be used in hospitality, health care, commercial, retail, and residential applications. The Versatrim will reduce energy consumption, emits little heat, and reduces cooling loads for added costs savings. Approximately 75% in energy savings compared to incandescent light source.

### Versatrim Features

- Watts: 10.5W
- Lumens: 800 Lumens
- Voltage: (120V standard); 120-277V (with optional 0-10V dimming driver)
- Color Temperature: 2700K, 3000K, 3500K, or 4000K
- Color Rendering Index: 93+ CRI Typical
- SDCM: 2 Step binning
- R9 Value: 85
- LED Life: 50,000 hours
- LED Type: Cree LED for maximum light output
- Versatility: Interchangeable baffle, reflector, and trim in round and square.
- EM Battery: 90 min, 800 delivered lumens.
- Warranty: 5 Year Limited Warranty
- Wet Location Certified

### LED Driver

Durable 120-277V dimmable driver provides high power factor with the optimum thermal management to prevent damage caused by high temperature. Driver protections include: output open load, over-current and short circuit, and over temperature with auto recovery.

### Emergency Battery

Optional emergency back-up may be ordered separately. Unit operates for 90 minutes with LED modules up to 20 Watts and is Damp location rated, 120/277AC operational, 800 delivered lumens.

### Dimming

Available in 8 driver selections. Standard Triac/ELV, 120. (018) 0-10V dimming in 800 lumens, 120-277V. (PEQ0) Lutron Hi-Lume Premier Ecosystem 0.1% w/soft on, fade to black dimming, 120-277V. (LDE1) Lutron Hi-Lume 1% Ecosystem with soft on, fade to black dimming, 120-277V. (L3DA) Hi-lume 1% EcoSystem/3-Wire L3D Driver (LTE) Hi-Lume 1% 2-wire, 120V (EEI) eldoLED Eco 1% Dim (0-10V), 120-277V. (EDIO) eldoLED Solo 0.1% Dim(0-10V), 120-277V. (EDID) eldoLED Solo 0.1% Dim(DALI), 120-277V.

### Module Mechanics

The RFL5 Series is constructed of durable heat sink, baffle or reflector, trim ring, diffused lens and Cree LEDs for optimum performance. Interchangeable round or square baffle, reflector, and trim ring are designed for convenient color selection and replacement in the field. Diffused, lens provides for even light output, glare control, and conceals LEDs from view.

### Housing Construction

- Minimum Clearance "IC" or insulated ceiling housings are rated for direct contact with insulation. No minimum clearance is required.
- Ceiling Thickness: Up to 1 1/4"
- Bar Hangers: Bar Hangers are adjustable from 13-5/8" to 25" and can be repositioned to 90°.
- Junction Box: Junction box is listed through branch circuit

### wiring and contains seven 7/8

- knockouts and four ROMEX pryouts with strain relief.
- Plaster Frame: Galvanized steel construction

### Labels/Compliance

- CSA Classified for wet location
- LM79 and LM80
- Can be used for state of California Title 24 compliance
- JAB certified

0-10V DIMMING

## ORDERING INFO

RHL6-ICAT	RFL6	8L					
Series	Module	Lumens	Color Temp.	Dimming	Baffle	or Reflector	Trim
RHL6-ICAT - 6" IC Air-Tight LED Housing	RFL6	8L - 800 Lumens (120V)	27 - 2700K 30 - 3000K 35 - 3500K 40 - 4000K	Leave blank - Triac/ELV 018 - 0-10V Dimming (800 lumen) LDE1 - Lutron Hi-Lume 1% Ecosystem with soft on, fade to black dimming PEQ0 - Lutron Hi-Lume Premier Ecosystem 0.1% w/soft on, fade to black dimming LTE <sup>1</sup> - Hi-Lume 1% 2-wire L3DA - Hi-Lume 1% EcoSystem/3-Wire L3D Driver EEI <sup>2</sup> - eldoLED Eco 1% Dim (0-10V) EDIO <sup>2</sup> - eldoLED Solo 0.1% Dim (0-10V) EDID <sup>2</sup> - eldoLED Solo 0.1% Dim (DALI)	<b>ROUND</b> 6BLW - White    6RLCH - Chrome    6TLW - White 6BLSN - Satin Nickel    6RLSN - Satin Nickel    6TLSN - Satin Nickel 6BLC - Copper    6RLC - Copper    6TLC - Copper 6BLB - Black    6RLB - Black    6TLB - Black 6BLBZ - Bronze    6RLBZ - Bronze    6TLBZ - Bronze 6RLH - Haze    6TLH - Haze 6RLCX - Custom    6TLCX - Custom		
					<b>SQUARE</b> 6SBLW - White    6SRLW - White    6STLW - White 6SBLB - Black    6SRLB - Black    6STLB - Black 6SRLH - Haze    6STLH - Haze 6SRLSN - Satin Nickel    6STLSN - Satin Nickel 6SRLCH - Chrome    6STLBZ - Bronze 6SRLBZ - Bronze    6STLCX - Custom 6SRLCX - Custom		

### Options

- 347SDT - 347V Step down Transformer
- EM - Emergency Back-up

1. 120V only.  
2. Must specify logarithmic or linear eldoLED driver.



www.rayonlighting.com  
info@rayonlighting.com

tel: 323.446.2626  
fax: 323.446.2606

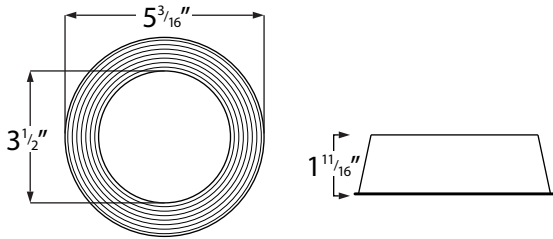
Specification and product availability subject to change without notice

03/21

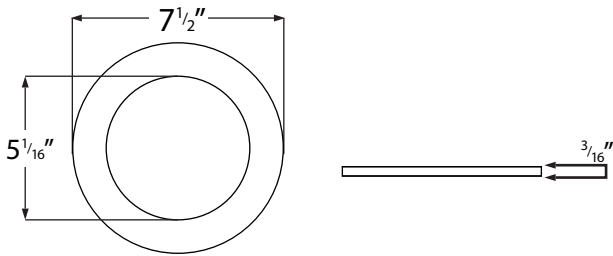
**BAFFLE, REFLECTOR AND TRIM DIMENSIONS**

**Round**

Baffle/Reflector

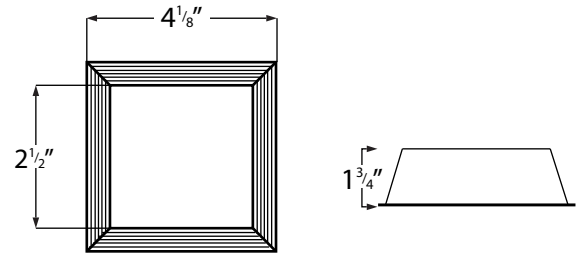


Trim

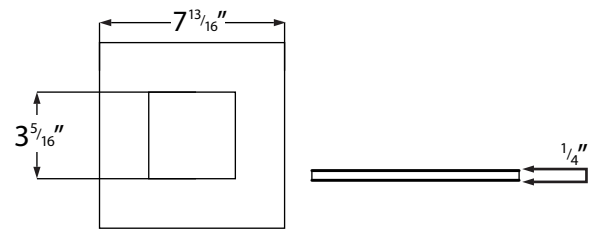


**Square**

Baffle/Reflector



Trim



0-10V DIMMING