



## LUMENPOD® 28 SYMMETRIC WLF

Another Lumenrail®  
Component for Life  
Safety and Light

©2019 Wayne Cable

### FLUSH PROFILE LUMINAIRE

The evolution of the handrail point source from Wagner Architectural Systems has performance that leverages the latest LED technology and manufacturing techniques. This USA engineered and manufactured luminaire is designed for pathway, stair and ramp illumination. Both the asymmetric and symmetric versions have optical characteristics developed specifically for these applications. The Lumenpod 28 provides a flush-profile architectural solution for new or retrofit projects, including egress compliance opportunities. Superior harsh environment protection and vandal resistance are combined with a straight forward, push-in installation.



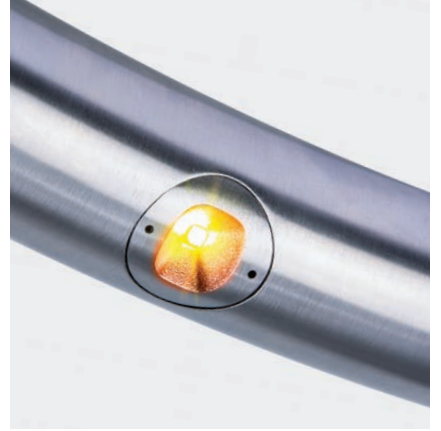
Specifications subject to change without notice. Verify data at time of order.

- Wildlife Amber: Long wave length lights, e.g. those that produce light that measures greater than 560 nanometers on a spectro-scope, are necessary for all construction visible from and adjacent to marine turtle nesting beaches
- Cast solid 316 stainless steel face
- Superior installation in a variety of rail diameters
- 93° optical distribution
- Rectilinear distribution promotes uniformity
- IK9 impact rating and secure installation
- 24VDC operation
- ETL wet location listed
- IP68 ingress protection
- US PAT. # 10,612,734 B2, USA Design, Manufacturing and Engineering

# LUMENPOD® 28

## SYMMETRIC WLF

Another Lumenrail® Component  
for Life Safety and Light



PROJECT NAME: \_\_\_\_\_

REP AGENCY: \_\_\_\_\_

APPROX. LINEAR FT: \_\_\_\_\_

SERVICE OPTIONS:  Field Measure  Job Site Support  System Installation



SCAN QR CODE  
for technical information,  
downloads and instructions.

### PART NUMBER BUILDER

LULR9030KS5	LULR		AMB	S	
EXAMPLE	FIXTURE TYPE	RAIL SIZE	WILDLIFE AMBER	OPTIC	DRIVE CURRENT

Light cannot be visible from the beach to be turtle friendly. The minimum amount of illumination for safety standards must be used. Certification #2018-041.

LULR- Lumenpod 28

50 - 1.50" (38mm) Dia  
120" Wall Tube  
66 - 1.66" (42mm) Dia  
Schedule 40 Pipe  
90 - 1.90" (48mm) Dia  
Schedule 40 Pipe



S- Symmetric

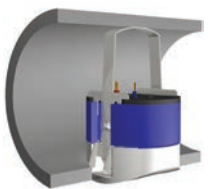
\*5- 1.7W @ 500 mA  
\*3- 1.3W @ 350 mA

### ELECTRICAL SPECIFICATIONS

All electrical connections to be made by a qualified electrician in accordance with all national, state and local electrical codes.

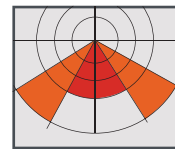
24VDC	ETL LISTED WET, IK9, IP68	0-10V INPUT	-40°F TO +120°F	
INPUT VOLTAGE	CERTIFICATIONS	DIMMING	OPERATING TEMP	
CLASS 2 REQUIRED	5 YEARS	UP TO 96 Lm/W LED	593 nm	8"
DRIVER	WARRANTY	EFFICIENCY	AMBER	WIRE LENGTH

### CONSTRUCTION



The Lumenpod 28's machined aluminum body dissipates heat while the cast stainless face integrates seamlessly with the rail. A precisely engineered retention spring positions it perfectly flush with standard diameter handrail. Removal is achieved only with our unique tool, solidifying a tamper resistant installation. US PAT. # 10,612,734 B2

### PHOTOMETRICS



Symmetric LCS Graph

Symmetric performance is design specific and provides superb illumination results in any application. IES reports to view or download are available by scanning the QR code or visiting our website.

### LUMENGEAR™ LED DRIVER & NEMA ENCLOSURE OPTIONS

Wagner offers multiple ETL listed options for both 24VDC power supplies and NEMA enclosures. Quantities and types will be configured based on your specifications and design. Additional specification options are available by request. Not all options apply to all products—please verify compatibility with the factory.

#### CLASS II DRIVERS:

- STD 100W
- Dali, DMX, 0-10V Dimming Protocols
- Multiple Wattages
- Made in USA Units Available

#### NEMA ENCLOSURES:

4X - Polycarbonate, Painted Steel or Stainless Steel

#### LUMENPOST™:

Integrated 100W, 0-10V DIM

Specifications subject to change without notice. Verify data at time of order.

@wagnercompanies



888-243-6914 // rfq@mailwagner.com  
10600 West Brown Deer Road // Milwaukee, WI 53224, USA

© 2021 R&B Wagner, Inc. All Rights Reserved.  
WagnerCompanies.com  
LULRS SUBM A3