



# LUMENPOD® 16 WLF

Another Lumenrail®  
Component for Life  
Safety and Light

©2019 John Korom

## COMPACT PERFORMER

Wildlife Amber: Long wave length lights, e.g. those that produce light that measures greater than 560 nanometers on a spectro-scope, are necessary for all construction visible from and adjacent to marine turtle nesting beaches

The next generation point source from Wagner Architectural Systems has performance that far exceeds the expectations of its discreet 5/8" diameter. The mechanically threaded luminaire is designed for coastal pathway illumination with mounting options for handrail, guard, decks, and shelter or entry structures.

- Solid machined 316 stainless steel
- 5 IES file supported optic distributions
- IK10 impact rating
- 24VDC operation
- ETL wet location listed
- IP67 ingress protection
- Round or square handrail mounting options



Specifications subject to change without notice. Verify data at time of order.

# LUMENPOD® 16 WLF

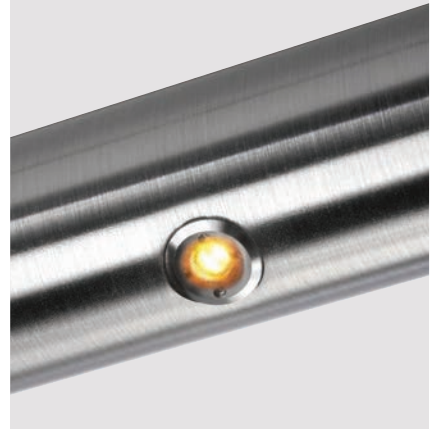
Another Lumenrail® Component for Life Safety and Light

PROJECT NAME: \_\_\_\_\_

REP AGENCY: \_\_\_\_\_


APPROX. LINEAR FT: \_\_\_\_\_

SERVICE OPTIONS:  Field Measure  Job Site Support  System Installation



SCAN QR CODE for technical information, downloads and instructions.

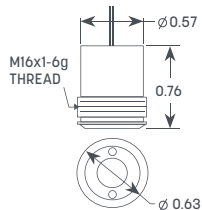
## PART NUMBER BUILDER

LULFAMB705 EXAMPLE	LULF FIXTURE TYPE	AMB COLOR TEMP	OPTIC	DRIVE CURRENT
Light cannot be visible from the beach to be turtle friendly. The minimum amount of illumination for safety standards must be used. Certification #2018-041.	LULF- Lumenpod® <i>* Indicates stock, other options may require additional lead-time.</i>		16 - 16° beam 23 - 23° beam 46 - 46° beam *70 - 70° beam 94 - 94° beam	*5- 1.7W @ 500 mA *3- 1.3W @ 350 mA

## ELECTRICAL SPECIFICATIONS

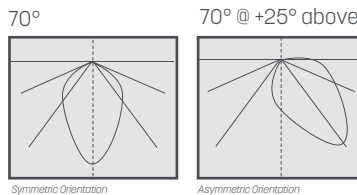
 Intertek <i>All electrical connections to be made by a qualified electrician in accordance with all national, state and local electrical codes.</i>	24VDC INPUT VOLTAGE	ETL LISTED WET, IK10, IP67, CE CERTIFICATIONS	0-10V INPUT DIMMING	-40°F TO +120°F OPERATING TEMP
	CLASS 2 REQUIRED DRIVER	5 YEARS WARRANTY	UP TO 96 LM/W LED EFFICIENCY	593 nm AMBER
				8" WIRE LENGTH

## CONSTRUCTION



The Lumenpod's threaded stainless steel body dissipates heat directly into the mounting material. A machined shoulder positions it nearly flush with any diameter hand rail, as well as flat or square stock.

## PHOTOMETRICS



Asymmetric performance can be fine tuned on fabricated systems by rotating the fixture around the rail diameter. A 25° angle provides superb illumination results in most applications. IES reports to view or download are available by scanning the QR code or visiting our website.

## LUMENGEAR™ LED DRIVER & NEMA ENCLOSURE OPTIONS

Wagner offers multiple ETL listed options for both 24VDC power supplies and NEMA enclosures. Quantities and types will be configured based on your specifications and design. Additional specification options are available by request. Not all options apply to all products, please verify compatibility with the factory.

### CLASS II DRIVERS:

- STD 100W
- Dali, DMX, 0-10V Dimming Protocols
- Multiple Wattages
- Made in USA Units Available

### NEMA ENCLOSURES:

4X - Polycarbonate, Painted Steel or Stainless Steel

### LUMENPOST™:

Integrated 100W, 0-10V DIM

Specifications may change without prior notice, verify data at time of order, all rights reserved

 @wagnercompanies

 **WAGNER**  
Architectural Systems

888-243-6914 // rfq@mailwagner.com  
10600 West Brown Deer Road // Milwaukee, WI 53224, USA

© 2021 R&B Wagner, Inc. All Rights Reserved.  
WagnerCompanies.com  
LULF SUBM A3