

PO number: _____ Signature: _____

T-BAR ECO DC | Order Specification Guide

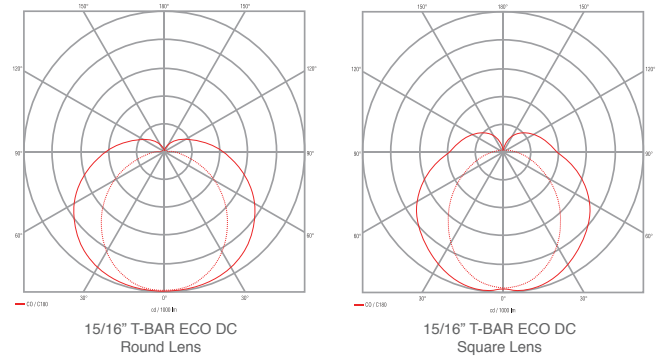
T-BAR ECO® DC

Product Name	Type of LED/K Color	Size	Grid Type	Optic	Mounting Clips
TBECODC = T-BAR ECO 24V DC	HW = Warm White 3000K MW = Medium Warm 3500K MN = Medium Neutral 4000K	2 = 2 ft 4 = 4 ft 4L = 4 ft L 6 = 60 cm 12 = 120 cm 12L = 120 cm L	24 = 15/16"	DW = Diffuser White Round DWS = Diffuser White Square	U = Universal A = Armstrong

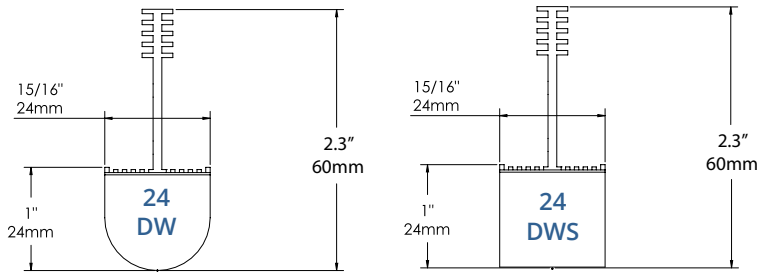
www.jlc-tech.com/patents

Type	Lumens*	Watts	lm/W*	lm/ft*
TBECODC-2	1237	11.2	110	619
TBECODC-4	2474	22.4	110	619

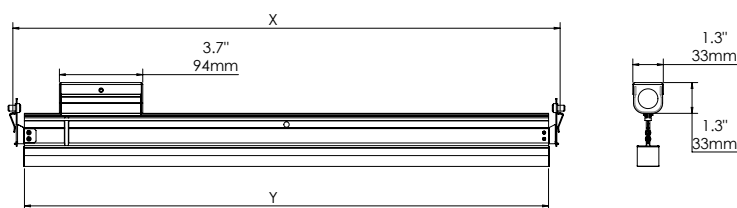
***3500K**



Profile Dimensions



Length Dimensions



Size	Grid Type	X	Y
2 = 2ft	24 = 15/16"	24"	23"
4 = 4ft	24 = 15/16"	48"	47"
4L = 4ft L	24 = 15/16"	48"	24"

NOTES:

T-BAR ECO DC is a 24VDC low voltage LED fixture that replaces the cross tees in a grid ceiling, offering uniform and diffuse light. Fixture must be installed in accordance with local electrical codes.

APPLICATIONS:

Executive, Medical, Health, Educational, Retail, Hotels, Airport, Hospitality and any open space areas that require a unique and elegant architectural lighting design.

MOUNTING:

Universal mounting brackets for easy installation to standard 15/16" T-Bars of most manufacturers' ceiling suspension systems. Armstrong compatible mounting clips for installation with Armstrong Ceiling 15/16" Prelude® and Clean Room™ suspension systems.

MATERIALS:

Anodized aluminum extruded body, steel mounting clips, white PC end caps, high transmitting acrylic PMMA lens.

ELECTRIC:

T-BAR ECO DC fixtures have a 24VDC input and consume 7W/ft max. Junction box installed on fixture for low voltage wiring connection to remote driver (sold separately). L₈₀ > 60k hrs

WARRANTY:

5 years limited warranty. For complete warranty terms, please visit our website.

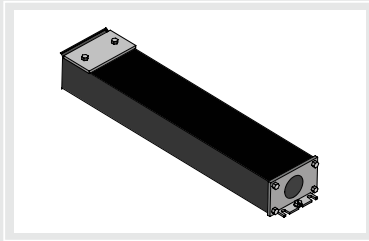
LISTINGS:

ETL/cETLus CE RoHS Indoor use only. IC Rated



Product Name	Driver Type	Power	Wattage	Voltage
TBECODC = T-BAR ECO DC Power Supply	PS = Non Dimmable DIM = 1% Dimmable 0-10 VDC	HP = High Power	100W = 96W	UNV = Universal 100-277V

WARRANTY: 5 years

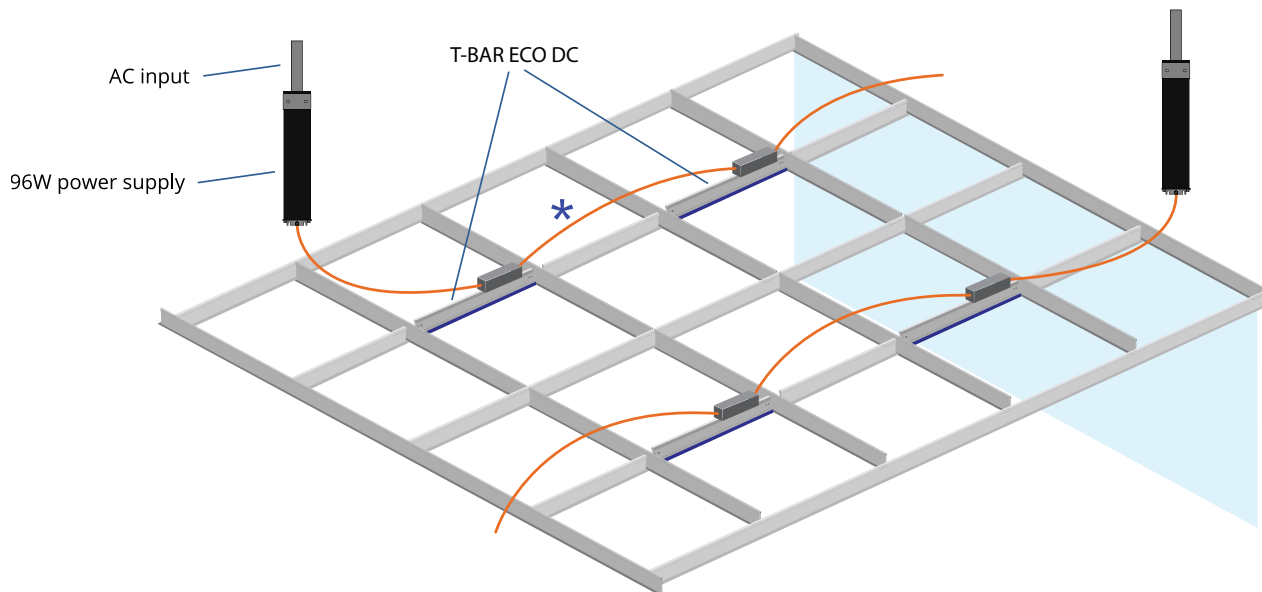
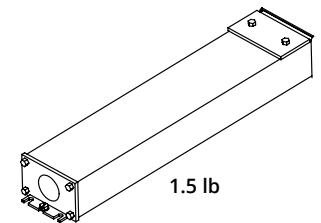
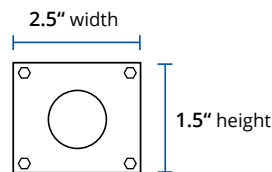
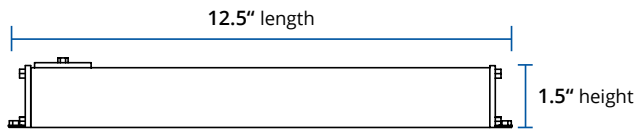


24VDC LED Driver 96W Power Supply

0-10 VDC dimmable and non dimmable

T-BAR ECO DC modules can be parallel connected up to 12 linear feet max per power supply. 96W max single output Class 2 power supply, universal input voltage 100-277Vac output 24VDC. This power supply includes a JB compartment for AC input direct wiring with metal conduit. Available with 0-10Vdc nominal 1% dimming option.

96W Power Supply dimensions



Secure LED driver to a remote location without the need of a NEMA box.

Wiring Chart:

Gauge	Length
18 (0.75 mm ²)	30ft (9m) maximum
16 (1.5 mm ²)	45ft (14m) maximum
14 (2.0 mm ²)	70ft (21m) maximum

* Cabling for low voltage connections between fixtures, by others.