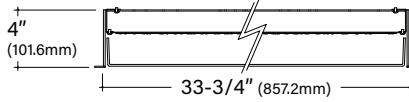


# FINA F36D

## 36" Direct Recessed Architectural Round

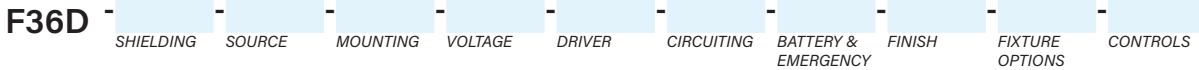


### Key Features

- Extruded aluminum housing is rolled and welded for seamless finish with 3/4" trim
- Aluminum top cover conceals all electrical components. Highly reflective die-formed white painted steel reflector
- FINA offered with a 5-year limited warranty. Covers LED, driver and fixture
- ETL Listed conforming to UL1598 in US and CSA 250 in Canada
- Maximum fixture weight is 47 lbs
- Room-side maintenance for LED system
- Buy American Act compliant



Example Part #: F36D-A-830HO-G-U-PL2-1-0-W



SHIELDING	SOURCE <sup>1</sup>	MOUNTING	VOLTAGE
<b>A</b> - Flush Satine Lens <b>AL</b> - Drop Satine Lens <b>AR</b> - Regress Satine Lens <i>Shielding pg. 2</i>	<b>27</b> - 2700K <b>30</b> - 3000K <b>35</b> - 3500K <b>40</b> - 4000K <b>CL</b> - Custom Lumens <b>CW</b> - Custom Watts <i>Source pg. 2</i>	<b>G</b> - Grid Ceiling <b>FL</b> - Flanged <b>NF</b> - Non-Flanged <b>SF</b> - Spackle Flange <i>Mounting pg. 3</i>	<b>U</b> - Universal (120 thru 277V) <b>1</b> - 120V <b>2</b> - 277V <b>3</b> - 347V <i>Voltage pg. 3</i>
DRIVER	CIRCUITING	BATTERY & EMERGENCY	FINISH
<b>PL2</b> - Advance Xitanium (1%, 0-10v) <b>PS1</b> - Advance Xitanium (50%/100%) <b>EE1</b> - eldoLED ECOdrive (1%, 0-10v) <b>ES1</b> - eldoLED SOLOdrive (0%, 0-10v) <b>LH1</b> - Lutron Hi-lume (1%, EcoSystem) <b>L51</b> - Lutron 5-Series (5%, EcoSystem) <b>OL2</b> - Osram Optotronic (1%, 0-10v) <b>OL4</b> - Osram Optotronic 347V (1%, 0-10v) <b>ND</b> - Non-Dimming <i>Driver pg. 3</i>	<b>1</b> - Single Circuit <b>E</b> - Emergency ( <i>entire fixture</i> ) <b>N</b> - Night Light ( <i>entire fixture</i> ) <i>Circuiting pg. 4</i>	<b>0</b> - None <b>1P</b> - Phillips Bodine 10W <b>1I</b> - Iota 10W <b>1IC</b> - Iota 10W, CEC Listed <i>Battery and Emergency pg. 4</i>	<b>W</b> - White <i>Finish pg. 4</i>
FIXTURE OPTIONS	CONTROLS <sup>2</sup>		
<b>CP</b> - Chicago Plenum <b>AM</b> - Antimicrobial Paint <b>FW6</b> - 6' Flex Whip <b>GMF</b> - Slow Blow Fusing <i>Fixture Options pg. 4</i>	<b>DLMFC</b> - Wattstopper DLM ( <i>wired</i> ) <b>ENLI</b> - Enlighted IOT ( <i>remote</i> ) <b>ENLC</b> - Enlighted Connected Lighting ( <i>remote</i> ) <i>Controls pg. 4</i>		

<sup>1</sup>When specifying SOURCE the first \_ is for specifying either 8 - 80CRI, 9 - 90CRI. The ending \_ \_ are for specifying output, example **HO** - High Output. See output charts for more information. <sup>2</sup>Controls can only be used with Single Circuit (1) or Emergency Circuit (E), cannot be used with any battery options. See Controls chart on page 4 for driver options and more information.

Specifications and dimensions subject to change without notice. Specification sheets that appear on pinnacle-ltg.com are the most recent version and supersede all other previously printed or electronic versions.



## Shielding

- White virgin acrylic lens with matte finish, removable for LED access
- Lens available in 3 positions

### Ordering Code

<b>A</b>	<b>AL</b>	<b>AR</b>
Flush Satine Lens	Drop Satine Lens	Regress Satine Lens

## Source: White LED

- Specify either 80 or 90 CRI
- Longer lead-time may apply for 90 CRI. Consult factory
- 80 CRI = R9≥19 and 90 CRI = R9≥61

## Custom Output- Lumens OR Wattage

<b>CL</b> _____	Specify CRI, CCT and desired lumens (i.e. CL8352000)	Specify lumens between standard offering listed below. Lumens are specified per color temp
<b>CW</b> _____	Specify CRI, CCT and desired wattage (i.e. CW94020)	Specify watts between standard offering listed below

### 80 CRI

	Color	Shielding		
		<b>A, AL, AR</b> Satine Lens		
		Lumens	Watts	LPW
<b>830LO</b>	3000K	4624	43.7	106
<b>830MO</b>	3000K	7974	74.1	108
<b>830HO</b>	3000K	11182	108.1	103
<b>835LO</b>	3500K	4849	44.2	110
<b>835MO</b>	3500K	8512	74.9	114
<b>835HO</b>	3500K	11788	108.9	108
<b>840LO</b>	4000K	4994	44.2	113
<b>840MO</b>	4000K	8528	74.7	114
<b>840HO</b>	4000K	11957	108.8	110

### 90 CRI

<b>927LO</b>	2700K	3923	45.5	86
<b>927MO</b>	2700K	6632	78.2	85
<b>927HO</b>	2700K	9140	115.3	79
<b>930LO</b>	3000K	4019	45.1	89
<b>930MO</b>	3000K	6777	77.3	88
<b>930HO</b>	3000K	9373	113.8	82
<b>935LO</b>	3500K	4019	45.1	89
<b>935MO</b>	3500K	6777	77.3	88
<b>935HO</b>	3500K	9373	113.8	82
<b>940LO</b>	4000K	4211	45.3	93
<b>940MO</b>	4000K	7104	77.7	91
<b>940HO</b>	4000K	9828	114.6	86

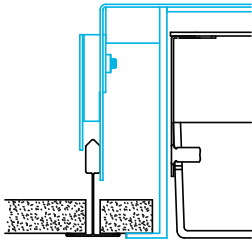


## Mounting

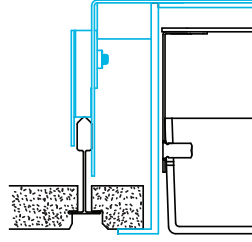
- Designed to install into acoustical grid and inaccessible ceilings
- Tie off fixture to structure with retention wires
- Maximum fixture weight is 47 lbs

### G

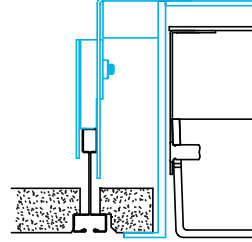
Grid Ceiling with 3/4" (19.1mm) Trim  
15/16" T-Bar



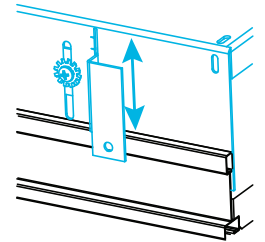
9/16" T-Bar



Screw Slot T-Bar

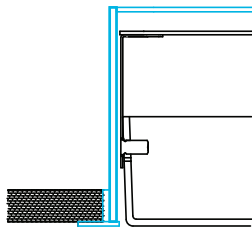


Recessed box allows for 1/2" of adjustability to accommodate a variety of grid ceilings



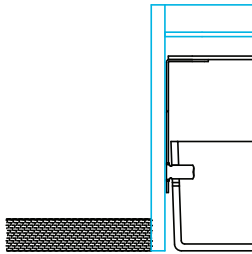
### FL

Standard 3/4" (19.1mm) Flange  
Exposed Flange



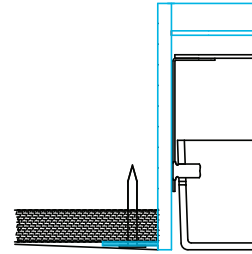
### NF

Non-Flange with 1/4" (6.4mm) Trim  
Metal Pan or Millwork



### SF

Spackle Flange  
Drywall, Flangeless



## Voltage

- Some FINA configurations will not accommodate all voltage options; consult with factory

<b>U</b>	Universal
<b>1</b>	120 volt
<b>2</b>	277 volt
<b>3</b>	347 volt

## Driver

- Standard Driver Option = PL2
- Driver Lifetime: 50,000 hours at 25°C ambient operating conditions
- For more Driver options, see Pinnacle Resource Guide on download pages at [pinnacle-ltg.com](http://pinnacle-ltg.com)
- Some FINA configurations will not accommodate all driver options; consult with factory

<b>PL2</b>	Philips Advance Xitanium 1%, 0-10v
<b>PS1</b>	Philips Advance Xitanium Step Dimming 50%/100%
<b>EE1</b>	eldoLED ECOdrive 1%, 0-10v Logarithmic
<b>EE2</b>	eldoLED ECOdrive 1%, 0-10v Linear
<b>ES1</b>	eldoLED SOLOdrive 0%, 0-10v Logarithmic
<b>ES2</b>	eldoLED SOLOdrive 0%, 0-10v Linear
<b>LH1</b>	Lutron Hi-lume Soft-on, Fade-to-black 1%, EcoSystem, LDE1
<b>L51</b>	Lutron 5-Series 5%, EcoSystem, LDE5
<b>OL2</b>	Osram Optotronic 1%, 0-10v
<b>OL4</b>	Osram Optotronic 347v 1%, 0-10v, requires 347v option
<b>ND</b>	Non-Dimming

Specifications and dimensions subject to change without notice. Specification sheets that appear on [pinnacle-ltg.com](http://pinnacle-ltg.com) are the most recent version and supersede all other previously printed or electronic versions.

Designed in Denver, CO • USA | [pinnacle-ltg.com](http://pinnacle-ltg.com) | O: 303-322-5570 F: 303-322-5568

F36D\_RECESS\_SPEC\_NOV2020



## Circuiting

- Select fixture circuiting from options below
- Some FINA configurations will not accommodate all circuiting options; consult with factory

<b>1</b>	Single Circuit
<b>E</b>	Emergency Circuit only
<b>N</b>	Night Light Circuit only

## Battery & Emergency

- Select battery or emergency options if required
- Battery duration is 90 minutes
- Test button is integral to fixture

- For more Battery options, see Pinnacle Resource Guide on download pages at [pinnacle-ltg.com](http://pinnacle-ltg.com)

<b>0</b>	No Battery
<b>1P</b>	Bodine 10w Integral
<b>1I</b>	Iota 10w
<b>1IC</b>	Iota 10w Integral, <i>CEC Listed</i>
<b>1G</b>	Bodine GTD, Generator Transfer Device

### For Approximate Battery Lumen Output

- Multiply battery wattage X fixture LPW shown on Lumen Table
- 10 (watts) x 92.3 (LPW) = 923 battery lumen output

### Battery & Emergency Ordering Examples

- Single circuit, 10w integral battery      Ordering Code: 1-1P
- Emergency circuit only, 10w integral battery      Ordering Code: E-1P

## Finish

- Powder-coat white painted finish on exposed trim

<b>W</b>	White
----------	-------

## Fixture Options

- Additional options to enhance the fixture and finish of the product

<b>CP</b>	Chicago Plenum
<b>AM</b>	Antimicrobial Paint
<b>FW6</b>	Flex Whip 6'
<b>GMF</b>	Internal Slow Blow Fuse

## Controls

- Pinnacle Lighting offers easy to specify network control solutions that connect to an intelligent centralized system to maximize lighting energy efficiencies or integral sensors for individual fixture control
- Pinnacle Lighting fixtures ship technology ready; commissioning by others
- Controls can only be used with Single Circuit (1) or Emergency Circuit (E)
- Contact factory for any non-standard configurations for layout, placement, or EM options
- One sensor per housing typical, contact factory for more information

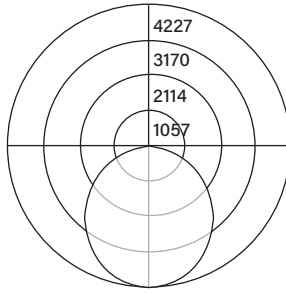
	Solution	Components	Network/Sensor	Connection	RQD Drivers	Limitation
<b>DLMFC</b>	Legrand Wattstopper DLM	LMFC-011	Digital Lighting Management (DLM)	Wired, two RJ45 ports	Any 0-10v	None
<b>ENLI</b>	Enlighted IOT	CU-4E	Enlighted, Remote	Enlighted Cable	Any 0-10v	Not available with 347 volt
<b>ENLC</b>	Enlighted Connected Lighting	CU-4E	Enlighted, Remote	Enlighted Cable	Any 0-10v	Not available with 347 volt



## Photometrics

### Satine Lens

Test #	ITL92435
Catalog #	F36D-A-840HO
Lumens	11954 lm
Watts	106 W
Efficacy	113 LPW



### Candela Distribution

Vert Angle	Horizontal Angle
	0
0	4196
5	4184
10	4127
15	4031
20	3898
25	3731
30	3536
35	3310
40	3058
45	2785
50	2487
55	2173
60	1840
65	1491
70	1136
75	785
80	460
85	196
90	12

### Luminance Data (cd/sq.m)

Angle In Degrees	Average 0-Deg	Average 45-Deg	Average 90-Deg
45	6929	6929	6929
55	6658	6658	6658
65	6190	6190	6190
75	5302	5302	5302
85	3861	3861	3861

For all available IES files, please visit our website at [pinnacle-ltg.com](http://pinnacle-ltg.com). Photometry testing in accordance to IESNA-LM-79-08 at an NVLAP accredited testing laboratory. Testing conducted at 25°C ambient conditions

## Approvals & Certifications

**Construction:** Extruded aluminum housing is rolled and welded for seamless finish with minimal trim detail. Aluminum top cover conceals all electrical components. Highly reflective die-formed white painted steel reflector. Wiring access on both sides and top of housing.

**Shielding:** Single piece diffuse lens creating a fully luminous housing. Available with standard satine lens.

**Sound Absorption:** Sound Absorption panels may be specified in place of lit fixture components to aid in Acoustic Control within a space. Sound Absorption material is a 9mm PET Polyester Fiber acoustic panel, containing up to 90% post-consumer content, made by others. Acoustic testing was completed by Riverbank Acoustic. For specific reports, contact Pinnacle directly.

**Mounting:** Designed to install into acoustical grid and inaccessible ceilings. Recessed, aircraft cable, pendant and surface mount available. For recessed, specify G for acoustical grid ceiling. Specify FL, NF, or SF for inaccessible ceilings. Tie off fixture to structure with retention wires. Maximum fixture weight is 47 lbs.

**LED:** 25°C test environment. Lumen output/wattage has a margin of +/- 5%. All luminaire configurations tested in accordance with IES LM-79. Diodes tested in accordance with IES LM-80. Lifetime calculated using IES TM-21. Minimum lifetime greater than 60,000 hours. L70 = 146,500 hours and L90 = 45,000 hours MacAdam 3-Step Ellipses. Not all products are Lighting Facts listed. For all available IES files, please visit our website at [pinnacle-ltg.com](http://pinnacle-ltg.com).

**CRI, CCT & Output:** Three lumen packages available. Low (LO), Mid (MO) and High (HO). Custom outputs are available. Specify custom lumens or watts between standard offering listed on CRI, CCT & Output page. 80 CRI is available for 3000K, 3500K, and 4000K. 90 CRI is available for 2700K, 3000K, 3500K, and 4000K. 80 CRI = R9≥19 and 90 CRI = R9≥61.

**Voltage:** Universal (U), 120 volt (1), 277 volt (2), 347 volt (3) options available. Some FINA configurations will not accommodate all voltage options; consult with factory.

**Driver:** Standard Driver Option is Advance 0-10V, 1% = PL2. Electronic driver, Power factor is >0.9 with a THD <20%. Driver Lifetime: 50,000 hours at 25°C ambient operating conditions. For more driver options, see Pinnacle Resource Guide on download pages at [pinnacle-ltg.com](http://pinnacle-ltg.com). Some FINA configurations will not accommodate all driver options.

**Circuiting:** Select from Single circuit (1), Emergency circuit (E) or Night Light circuit (N). Some FINA configurations will not accommodate all circuiting options, consult with factory.

**Battery & Emergency:** Select battery or emergency options if required. If battery or emergency option is not required, enter 0. Battery duration is 90 minutes as standard. Test button is integral to fixture. For more Battery options, see Pinnacle Resource Guide on download pages at [pinnacle-ltg.com](http://pinnacle-ltg.com).

**Finish:** Standard powder-coat textured white consult factory for chip of standard paint finishes. Contact factory for additional custom color and finish options.

**Controls:** DLM utilizes wired network connections for digital control through switching and dimming with 0-10v LED drivers. Enlighted Smart Sensor provides multi-functionality including daylight harvesting and PIR occupancy; for IOT platform using 0-10v LED drivers. Enlighted Smart Sensor provides multi-functionality including daylight harvesting and PIR occupancy; for Connected platform using 0-10v LED drivers.

**Labels:** ETL Listed conforming to UL1598 in US and CSA 250 in Canada. Standard and High output lumen packages are IC Rated for recessed fixtures and are approved for dry/damp location unless otherwise noted.

**Fixture Weight:** 47 lbs maximum

**Buy American Act compliant**

**Warranty:** FINA LED offered with a 5-year limited warranty. Covers LED, driver and fixture.