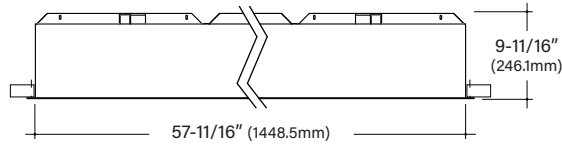




FINA F60

60" Recessed Architectural Round



Key Features

- Extruded aluminum housing is rolled and welded for seamless finish with 1/4" trim
- Aluminum top cover conceals all electrical components. Highly reflective die-formed white painted steel reflector
- FINA offered with a 5-year limited warranty. Covers LED, driver and fixture
- IC Rated, UL and cUL Listed, approved for dry/damp location
- Maximum fixture weight is 110 lbs
- Room-side maintenance for LED system
- Buy American Act compliant



Example Part #: F60-A-830HO-G-U-OL2-1-0-W



A	-----	-----	---
SHIELDING	CRI, CCT & OUTPUT	MOUNTING	VOLTAGE
A - Flat Satine Lens <i>Shielding pg. 2</i>	27 _ _ - 2700K 30 _ _ - 3000K 35 _ _ - 3500K 40 _ _ - 4000K CL _ _ _ _ _ - Custom Lumens CW _ _ _ _ _ - Custom Watts <i>Lumen Output pg. 2</i> <i>Example: 830HO is 8 = 80 CRI; 30 = 3000K; HO = High Output; Blank = Standard Output</i>	G - Grid Ceiling FL - Flanged NF - Non-Flanged SF - Spackle Flange <i>Mounting pg. 2</i>	U - Universal (120 thru 277V) 1 - 120V 2 - 277V 3 - 347V <i>Voltage pg. 3</i>
DRIVER	CIRCUITING	BATTERY & EMERGENCY	FINISH
OL2 - Osram (1%, 0-10v, standard) OL3 - Osram 347V (10%, 0-10v) EE1 - eldoLED ECOdrive (1%, 0-10v) ES1 - eldoLED SOLOdrive (0%, 0-10v) LH1 - Lutron Hi-lume (1%, EcoSystem) L51 - Lutron 5-Series (5%, EcoSystem) PL2 - Advance Xitanium (1%, 0-10v) PS1 - Advance Xitanium (50%/100%) ND - Non-Dimming <i>Driver pg. 3</i>	1 - Single Circuit E - Emergency (entire fixture) N - Night Light (entire fixture) <i>Circuiting pg. 3</i>	0 - None 1P - Bodine 10W 1I - Iota 10W 1IC - Iota 10W (CEC Listed) 1G - Bodine GTD <i>Battery and Emergency pg. 3</i>	W - White <i>Finish pg. 3</i>
FIXTURE OPTIONS	CONTROLS		
CP - Chicago Plenum AM - Antimicrobial Paint FW6 - 6' Flex Whip GMF - Slow Blow Fusing <i>Fixture Options pg. 4</i>	Pinnacle is able to accommodate different control solutions from different manufacturers. Consult Factory for more information.		

Specifications and dimensions subject to change without notice. Specification sheets that appear on pinnacle-ltg.com are the most recent version and supersede all other previously printed or electronic versions.

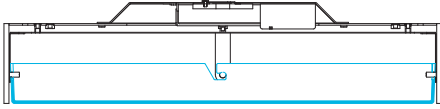


Shielding

- White virgin acrylic lens with matte finish, removable for LED access

A

Flat Lens



Output

- Specify either 80 or 90 CRI
- Longer lead-time may apply for 90 CRI. Consult factory.
- 80 CRI = R9≥19 and 90 CRI = R9≥61

Custom Output- Lumens OR Wattage

CL _____	Specify CRI, CCT and desired lumens (i.e. CL8352000)	Specify lumens between standard offering listed below. Lumens are specified per color temp
CW _____	Specify CRI, CCT and desired wattage (i.e. CW940200)	Specify watts between standard offering listed below

80 CRI

	Color	Output	Watts	Shielding	
				A Satine Lens	
				Lumens	LPW
830	3000K	Standard	145.2	14773	101.7
830HO	3000K	High	295.9	28710	97.0
835	3500K	Standard	145.2	15191	104.6
835HO	3500K	High	295.9	29523	99.8
840	4000K	Standard	145.2	15485	106.6
840HO	4000K	High	295.9	30094	101.7

90 CRI

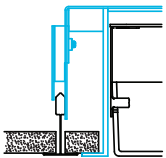
927	2700K	Standard	145.2	11676	80.4
927HO	2700K	High	295.9	22691	76.7
930	3000K	Standard	145.2	13606	93.7
930HO	3000K	High	295.9	26442	89.4
935	3500K	Standard	145.2	13657	94.1
935HO	3500K	High	295.9	26542	89.7
940	4000K	Standard	145.2	13813	95.1
940HO	4000K	High	295.9	26844	90.7

Mounting

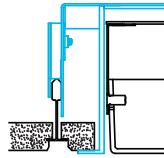
- Designed to install into acoustical grid and inaccessible ceilings
- Tie off fixture to structure with retention wires
- Maximum fixture weight is 110 lbs

G

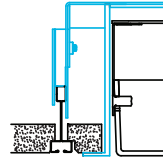
Grid Ceiling with 3/4" (19.1mm) Trim
15/16" T-Bar



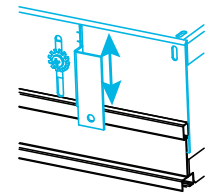
9/16" T-Bar



Screw Slot T-Bar

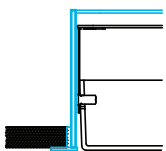


Recessed box allows for 1/2" of adjust-ability to accommodate a variety of grid ceilings



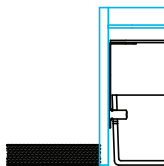
FL

Standard 3/4" (19.1mm) Flange
Exposed Flange



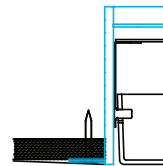
NF

Non-Flange with 1/4" (6.4mm) Trim
Metal Pan or Millwork



SF

Spackle Flange
Drywall, Flangeless



Specifications and dimensions subject to change without notice. Specification sheets that appear on pinnacle-ltg.com are the most recent version and supersede all other previously printed or electronic versions.

Designed in Denver, CO • USA | pinnacle-ltg.com | O: 303-322-5570 F: 303-322-5568

F60_LED_SPEC_NOV2020



Voltage

- Some FINA configurations will not accommodate all voltage options; consult with factory

U	Universal
1	120 volt
2	277 volt
3	347 volt

Driver

- Standard Driver Option = OL2
- Driver Lifetime: 50,000 hours at 25°C ambient operating conditions
- For more Driver options, see Pinnacle Resource Guide on download pages at pinnacle-ltg.com
- Some FINA configurations will not accommodate all driver options; consult with factory

OL2	Osram Optotronic 1%, 0-10v, nominal 1% dimming range
OL3	Osram Optotronic 347v 10%, 0-10v, requires 347v option
EE1	eldoLED ECOdrive 1%, 0-10v Logarithmic
EE2	eldoLED ECOdrive 1%, 0-10v Linear
ES1	eldoLED SOLOdrive 0%, 0-10v Logarithmic
ES2	eldoLED SOLOdrive 0%, 0-10v Linear
LH1	Lutron Hi-lume Soft-on, Fade-to-black 1%, EcoSystem, LDE1
L51	Lutron 5-Series 5%, EcoSystem, LDE5
PL2	Advance Xitanium 1%, 0-10v
PS1	Advance Xitanium Step Dimming 50%/100%
ND	Non-Dimming

Circuiting

- Select fixture circuiting from options below
- Some FINA configurations will not accommodate all circuiting options; consult with factory

1	Single Circuit
E	Emergency Circuit only
N	Night Light Circuit only

Battery & Emergency

- Select battery or emergency options if required
- Battery duration is 90 minutes
- Test button is integral to fixture
- For more Battery options, see Pinnacle Resource Guide

0	No Battery
1P	Bodine 10w Integral
1I	Iota 10w Integral
1IC	Iota 10w Integral, CEC Listed
1G	Bodine GTD

For Approximate Battery Lumen Output

- Multiply battery wattage X fixture LPW shown on Lumen Table
- 10 (watts) x 92.3 (LPW) = 923 battery lumen output

Battery & Emergency Ordering Examples

- Single circuit, 10w integral battery Ordering Code: 1-1P
- Emergency circuit only, 10w integral battery Ordering Code: E-1P

Finish

- Powder-coat white painted finish on exposed trim

W	White
----------	-------



Fixture Options

- Additional options to enhance the fixture and finish of the product

CP	Chicago Plenum
AM	Antimicrobial Paint
FW6	Flex Whip 6'
GMF	Internal Slow Blow Fuse

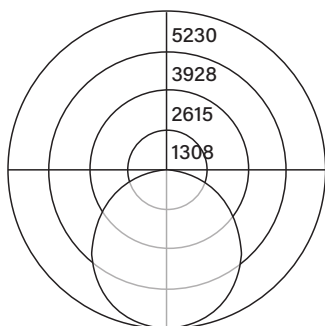
Controls

- Pinnacle is able to accommodate different control solutions from different manufacturers. Consult Factory for more information.

Photometrics

Satine Lens

Test #	ITL84339
Catalog #	F60-A-840
Lumens	15485 lm
Watts	145.2 W
Efficacy	107 LPW



Candela Distribution

Vert Angle	Horizontal Angle				
	0	22.5	45	67.5	90
0	5230	5230	5230	5230	5230
5	5216	5217	5217	5216	5218
10	5156	5158	5158	5158	5159
15	5057	5055	5054	5053	5056
20	4908	4908	4908	4908	4907
25	4720	4718	4719	4718	4712
30	4493	4485	4483	4487	4482
35	4227	4219	4224	4218	4212
40	3926	3924	3921	3921	3916
45	3589	3589	3586	3585	3588
50	3226	3226	3222	3215	3223
55	2837	2834	2831	2830	2824
60	2430	2420	2417	2416	2412
65	1990	1984	1982	1982	1980
70	1540	1535	1532	1534	1531
75	1091	1086	1085	1088	1083
80	668	659	664	666	662
85	308	305	306	311	307
90	12	14	14	13	13

Luminance Data (cd/sq.m)

Angle In Degrees	Average 0-Deg	Average 45-Deg	Average 90-Deg
45	3007	3005	3006
55	2930	2924	2917
65	2790	2778	2775
75	2497	2484	2478
85	2093	2082	2086

For all available IES files, please visit our website at pinnacle-ltg.com. Photometry testing in accordance to IESNA-LM-79-08 at an NVLAP accredited testing laboratory. Testing conducted at 25°C ambient conditions

Approvals & Certifications

Construction: Extruded aluminum housing is rolled and welded for seamless finish with minimal trim detail. Aluminum top cover conceals all electrical components. Highly reflective die-formed white painted steel reflector. Wiring access on both sides and top of housing.

Shielding: Single piece diffuse lens creating a fully luminous housing. Available with standard satine lens.

Mounting: Designed to install into acoustical grid and inaccessible ceilings. Specify G for acoustical grid ceiling. Specify FL, NF, or SF for inaccessible ceilings. Tie off fixture to structure with retention wires. Maximum fixture weight is 110 lbs.

LED: 25°C test environment. Lumen output/wattage has a margin of +/- 5%. All luminaire configurations tested in accordance with IES LM-79. Diodes tested in accordance with IES LM-80. Lifetime calculated using IES TM-21. Minimum lifetime greater than 60,000 hours. MacAdam 3-Step Ellipses. Not all products are Lighting Facts listed. For all available IES files, please visit our website at pinnacle-ltg.com.

CRI, CCT & Output: Two lumen packages available. Standard and High (HO). Custom outputs are available. Specify custom lumens or watts between standard offering listed on CRI, CCT & Output page. 80 CRI is available for 3000K, 3500K, and 4000K. 90 CRI is available for 2700K, 3000K, 3500K, and 4000K. 80 CRI = R9≥19 and 90 CRI = R9≥61.

Voltage: Universal (U), 120 volt (1), 277 volt (2) and 347 volt (3) options available. Must specify OL3 in Driver section when 347 volt (3) is selected. Some FINA configurations will not accommodate all voltage options; consult with factory.

Driver: Standard Driver Option is Osram 0-10V, 1% = OL2. Electronic driver, Power factor

is >0.9 with a THD <20%. Driver Lifetime: 50,000 hours at 25°C ambient operating conditions. Ambient operating range: -20°F/-30°C to TBD. For more driver options, see Pinnacle Resource Guide on download pages at pinnacle-ltg.com. Some FINA configurations will not accommodate all driver options.

Circuiting: Select from single circuit (1), Emergency circuit (E) or Night Light circuit (N). Some FINA configurations will not accommodate all circuiting options, consult with factory.

Battery & Emergency: Select battery or emergency options if required. If battery or emergency option is not required, enter 0. Battery duration is 90 minutes as standard. Test button is integral to fixture. For more Battery options, see Pinnacle Resource Guide on download pages at pinnacle-ltg.com.

Finish: Standard powder-coat textured white. Contact factory for additional custom color and finish options.

Controls: Consult factory.

Labels: UL and cUL Listed. Standard and HO lumen packages are IC Rated, approved for dry/damp location unless otherwise noted.

Fixture Weight: 110 lbs. maximum

Buy American Act Compliant

Warranty: FINA LED offered with a 5-year limited warranty. Covers LED, driver and fixture.