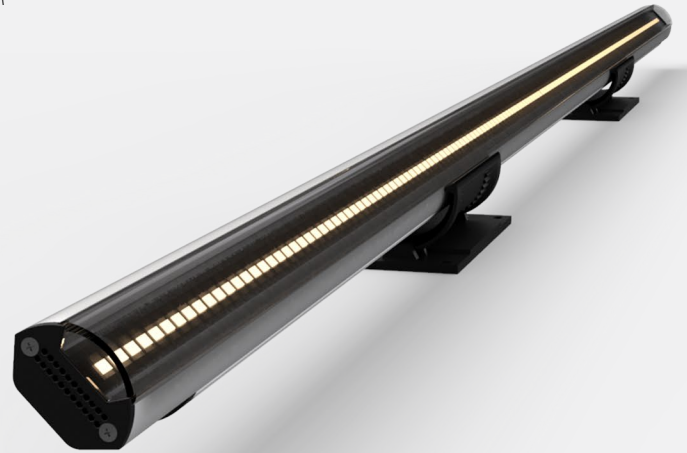


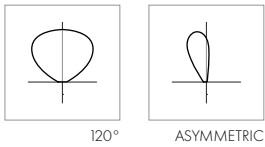
PROJECT:	TYPE:	CAT. #:	PCM - - - - SM - - UNV - - MG -
----------	-------	---------	---------------------------------

PROFILE

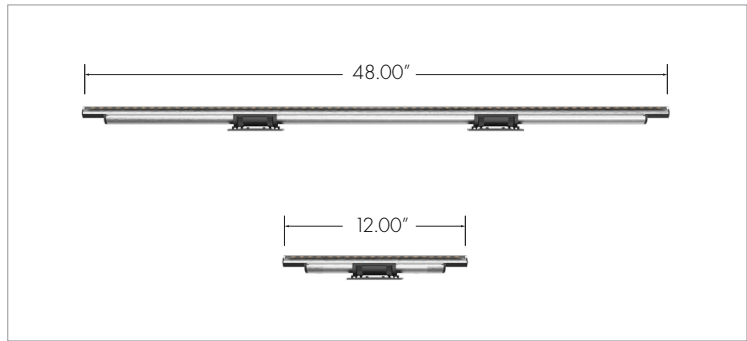
LIGHT SOURCE	3.5 W/FT, 5 W/FT, 7 W/FT, 10 W/FT, 13 W/FT
OPTICS	120°, ASYMMETRIC
CCT	27K, 30K, 35K, 40K, STATIC COLORS, DIM TO WARM
CRI	90+ IS STANDARD
PERFORMANCE	UP TO 113LM/W
VOLTAGE	UNIVERSAL 120-277VAC (NOT AVAILABLE IN 240V)
POWER	INTEGRATED POWER SUPPLY
CONTROL	0-10V DIMMING, DMX DIMMING
DIMENSIONS	1.87" x 1.93" x 12" - 1.87" x 1.93" x 48"
WEIGHT	1.6 LBS (0.72 KG) - 6.0 LBS (2.72 KG)
HOUSING	ALUMINUM HOUSING, MOLDED END CAPS
EPA	0.483 FT²
LENS	POLYCARBONATE LENS
FINISH	METALLIC GRAY
WARRANTY	5-YEAR LIMITED
OPERATING TEMP	-25° C TO 40° C
LUMEN MAINTENANCE	75,000 HOURS
CERTIFICATION	ETL, cETL FOR DAMP/DRY LOCATION



DISTRIBUTION



DIMENSIONS



PERFORMANCE SUMMARY

3.5W/FT, 40K, 48"	LUMENS	EFFICACY
120°	1322	113 LM/W
ASYMMETRIC	1322	113 LM/W

OPTICS



PROJECT: _____ TYPE: _____ CAT. #: PCM - - - - SM - - - - UNV - - - - MG -

PROFILE

separate options with dashes

PCM				SM		UNV		MG	
1	2	3	4	5	6	7	8	9	10

1 FIXTURE PILOT PCM _____ PCM	3 CCT 2700K _____ 27K 3000K _____ 30K 3500K _____ 35K 4000K _____ 40K RED _____ R GREEN _____ G BLUE _____ B AMBER _____ A DIM TO WARM _____ ZIA requires 0-10V dimming	5 MOUNTING SURFACE _____ SM	9 FINISH METALLIC GRAY _____ MG finish is subject to change without notice.
2 WATTAGE 3.5 WATTS/FT _____ 3.5 5 WATTS/FT _____ 5 7 WATTS/FT _____ 7 10 WATTS/FT _____ 10 13 WATTS/FT _____ 13	4 DISTRIBUTION 120° _____ 120 ASYMMETRIC RIGHT _____ ASYR right side power feed ASYMMETRIC LEFT _____ ASYL left side power feed	6 FIXTURE LENGTH 12" _____ 12 48" _____ 48	10 OPTIONS FROSTED LENS _____ FL not available with asymmetric distribution
		7 VOLTAGE 120-277VAC _____ UNV not available in 240V an AC Leader Cable is required with each fixture run for connection from first fixture to the j-box.	
		8 CONTROL 0-10V DIMMING _____ DIM dimming control system supplied by others. contact factory for TRIAC dimming. DMX DIMMING _____ DMXDM 2-channel fixture control DMX dimming not available with DIM TO WARM	

IQ QUICKSHIP [see Quickship Guide >](#)

IQ/PCM/7W/35K/120°/SM/12/UNV/DIM/MG/FL
 IQ/PCM/7W/35K/120°/SM/48/UNV/DIM/MG/FL
 IQ/PCM/7W/50K/120°/SM/48/UNV/MG

The listed configurations are eligible for the Insight Quickship program.

CONTROL & WIRING ORDER OPTIONS

DMX DISTRIBUTION KIT - REQUIRED FOR DMX DIMMING
 DMX/RDM DISTRIBUTION KIT (4 OUTPUTS) - IP67 _____ CDS-RDM
 DMX/RDM DISTRIBUTION KIT consists four outputs. Each output is limited to (1) run per output, up to 32 fixtures max. Four terminators are included for end of line termination.

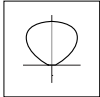

LEADER CABLES
 10' BLACK LEADER CABLE _____ PCML-10/0-10V
 used for connection to the start of each run.
 end of line terminator provided with each leader cable.
 a leader cable is required with each fixture run for connection from j-box to the first fixture.

JUMPER CABLES
 1' BLACK JUMPER CABLE _____ PCMJ-1/0-10V
 for 0-10V runs
 5' BLACK JUMPER CABLE _____ PCMJ-5/0-10V
 for 0-10V runs
 plug and play installation allows for end-to-end fixture connection without additional AC jumpers.
 if fixtures are not mounted in an end-to-end continuous manner, AC jumpers are required.

PROJECT:	TYPE:	CAT. #:	PCM - - - - SM - - UNV - - MG -
----------	-------	---------	---------------------------------

PERFORMANCE

*BASELINE - ALL OTHER DATA ESTIMATED

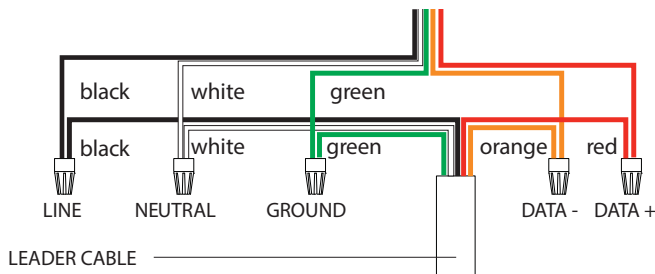
DISTRIBUTION	3.5 W/FT (3.0 W/FT)		5.0 W/FT (4.3 W/FT)		7.0 W/FT (6.2 W/FT)		10.0 W/FT (10.0 W/FT)		13.0 W/FT (12.8 W/FT)	
	DELIVERED LUMENS	LUMINAIRE EFFICACY	DELIVERED LUMENS	LUMINAIRE EFFICACY	DELIVERED LUMENS	LUMINAIRE EFFICACY	DELIVERED LUMENS	LUMINAIRE EFFICACY	DELIVERED LUMENS	LUMINAIRE EFFICACY
120° 	1322 LM	113 LM/W	1925 LM	111 LM/W	2495 LM	107 LM/W	3543 LM	89 LM/W	4741 LM	92 LM/W
ASYMMETRIC 	1611 LM	115 LM/W	2302 LM	115 LM/W	3223 LM	115 LM/W	4604 LM	114 LM/W*	5985 LM	115 LM/W

WIRING

FIXTURES PER CIRCUIT

3.5 W/FT (3.0 W/FT)		5.0 W/FT (4.3 W/FT)		7.0 W/FT (6.2 W/FT)		10.0 W/FT (10.0 W/FT)		13.0 W/FT (12.8 W/FT)	
120V	277V	120V	277V	120V	277V	120V	277V	120V	277V
100 FT	200 FT	100 FT	200 FT	100 FT	200 FT	70 FT	125 FT	55 FT	100 FT

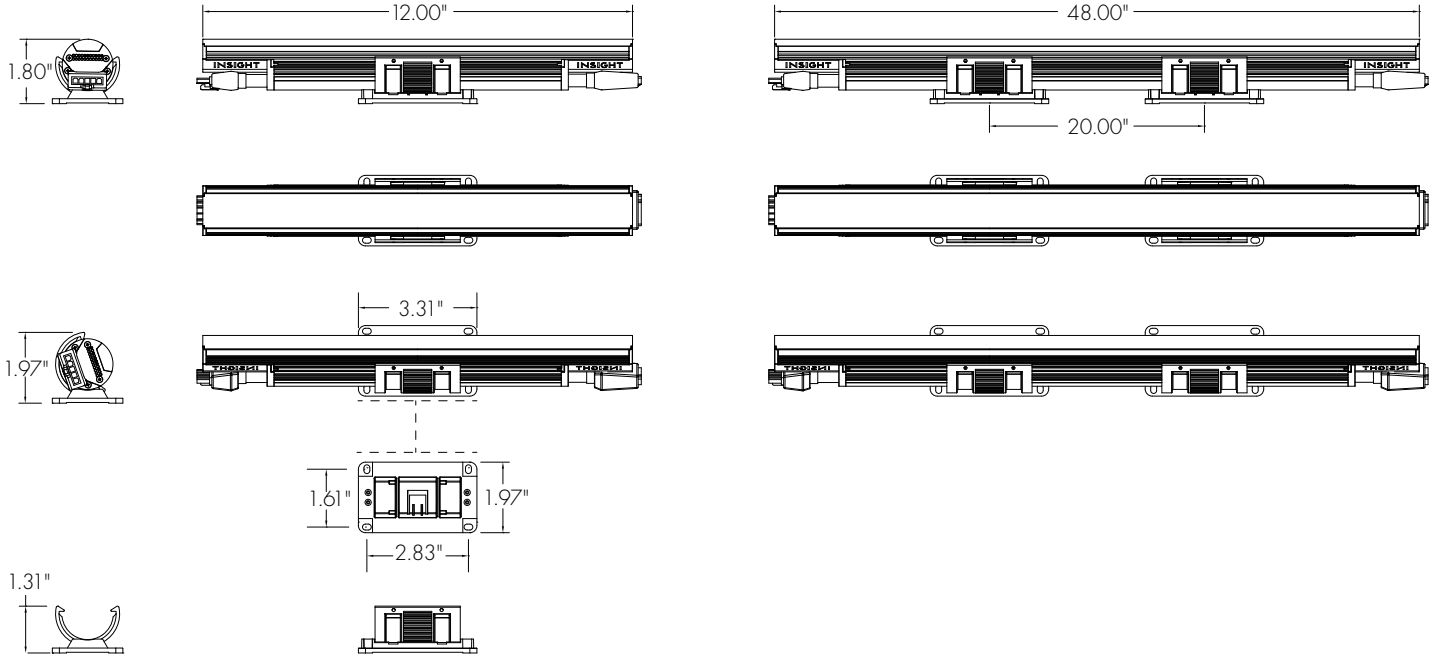
SCHEMATIC



PROJECT:	TYPE:	CAT. #:	PCM - - - - SM - - UNV - - MG -
----------	-------	---------	---------------------------------

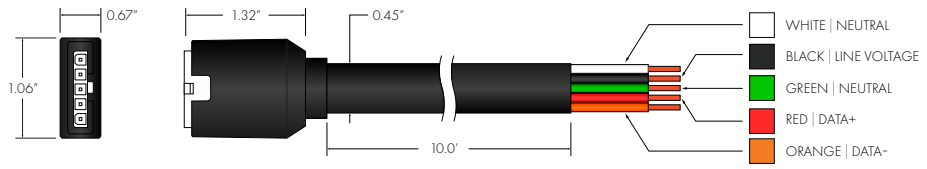
DIMENSIONS

SURFACE

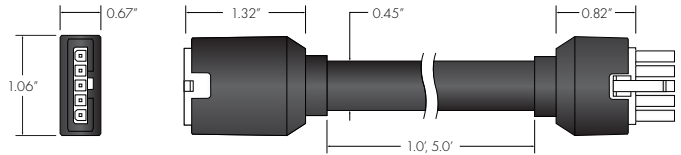


CABLES

PCM/PGM LEADER (PCML) BLACK | 2x16AWG | 105°C | 300V



PCM/PGM JUMPER (PCMJ) BLACK | 5x16AWG | 105°C | 300V



PCM/PGM TERMINATOR (PCMT) BLACK | 105°C | 300V

