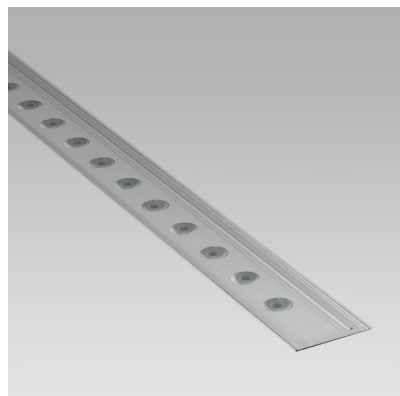


# KRIO-IN (Model)



## TECHNICAL INFORMATION

[IES Files](#)

|                      |                                |
|----------------------|--------------------------------|
| <b>Watt</b>          | 2.5W – 24W                     |
| <b>Luminaire</b>     | Up to 2100lm                   |
| <b>CCT</b>           | 3000K – 4000K                  |
| <b>CRI</b>           | >80                            |
| <b>Wiring</b>        | VCC 24Vdc                      |
| <b>LED life time</b> | > 60000h - L80 - B20 (Ta 25°C) |
| <b>Color</b>         | Aluminium - 21                 |

## DESCRIPTION

### Construction

- Extruded aluminium body.
- Die-cast aluminium caps (EN 47100).
- Double layer polyester powder paint resistant to corrosion and salt spray fog.
- Silicone rubber gaskets.
- AISI 316 stainless steel external screws.

### Electrical & Optics

- High-efficacy LEDs with standard 3000K, 4000K (2700K or other CCTs available on request).
- PMMA lenses for LEDs.
- Screen made of 5/16" thermal-shock resistant tempered glass.
- To be operated only with constant voltage 24Vdc Class 2 remote drivers (order separately).

### Listings

- UL certified to U.S. and Canadian standards, suitable for wet locations (cULus mark).
- Rated IP67 per EN60598.
- Luminaire rated for -40°C minimum ambient temperature.
- 1000Kg static load capacity per EN60598.
- High quality LED sources characterized according to IES TM-30, with high color consistency <3SDCM and long useful life >60000 hours at L80.

### Installation

- Recessed installation.
- Steel spring clips.
- Supplied with extruded aluminium recessed box.
- Supplied with power cord. 22AWG conductors.
- End caps to be ordered separately.

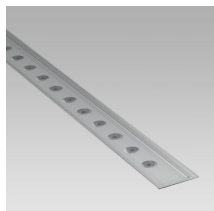
IP67



## VERSIONS *(Click on below link to configure your product)*



[low luminance](#)



[high power](#)

- Size:
- 2" 17/32
  - 3" 5/8
  - 11" 13/16 to 27" 9/16

- Size:
- 2" 17/32
  - 3" 5/8
  - 27" 9/16

## OPTICS



See accessories in the next page

## STRAIGHT JOINT.

Arcluce Code **1099241X**  
Code Ref. **O7931**

**TECHNICAL INFORMATION**

**Weight** 0.02 lb

---

## PAINTED STEEL ENDS AND SUCTION CAPS (2 PCS).

Arcluce Code **1099018X-21**  
Code Ref. **O7934-21**

**TECHNICAL INFORMATION**

**Color** Aluminium - 21

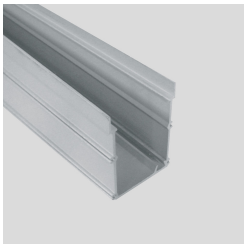
---

**Weight** 0.44 lb

---

## PAINTED EXTRUDED ALUMINIUM INSTALLATION-BOX

Arcluce Code **1099132X-21**  
Code Ref. **O7937-21**

**TECHNICAL INFORMATION**

**Color** Aluminium - 21

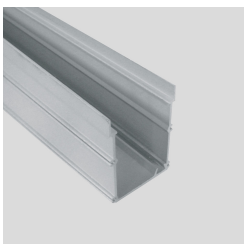
---

**Weight** 2.43 lb

---

## PAINTED EXTRUDED ALUMINIUM INSTALLATION-BOX

Arcluce Code **1099131X-21**  
Code Ref. **O7936-21**

**TECHNICAL INFORMATION**

**Color** Aluminium - 21

---

**Weight** 1.1 lb

---