

TULA (Model)



TECHNICAL INFORMATION

[IES Files](#)

| | |
|----------------------|--------------------------------|
| Watt | 5W – 10W |
| Luminaire | Up to 860lm |
| CCT | 3000K – 4000K |
| CRI | >70 – >80 |
| Wiring | 120V 60Hz |
| LED life time | > 60000h - L80 - B20 (Ta 25°C) |
| Color | Aluminium - 21 / Grey - 16 |

DESCRIPTION

Construction

- Die-cast aluminium body (EN 47100).
- Double layer polyester powder paint resistant to corrosion and salt spray fog.
- Silicone rubber gaskets.
- AISI 316 stainless steel external screws.

Electrical & Optics

- Wiring on removable galvanized steel tray.
- High-efficacy LEDs with standard 3000K, 4000K (2700K or other CCTs available on request).
- PMMA lenses for LEDs.
- Opal PMMA screen or 3/16" thermal-shock resistant tempered safety glass.

Listings

- UL certified to U.S. and Canadian standards, suitable for wet locations (cULus mark).
- Rated IP66 per EN60598.
- Luminaire rated for -25°C minimum ambient.
- High quality LED sources characterized according to IES TM-30, with high color consistency <3SDCM and long useful life >60000 hours at L80.

Installation

- Wall mounted.
- Waterproof grommet for single cable entry.
- Die-cast aluminium base (EN 47100) for anchoring with rawlplugs.
- Available accessory for mounting on standard junction boxes.

IP66



VERSIONS *(Click on below link to configure your product)*



[oneway](#)

Size:
Ø 1" 31/32
4" 3/4
4" 19/32



[oneway - opal](#)

Size:
Ø 1" 31/32
4" 3/4
5" 7/16



[twoway](#)

Size:
Ø 1" 31/32
4" 3/4
5" 5/32



[twoway - opal](#)

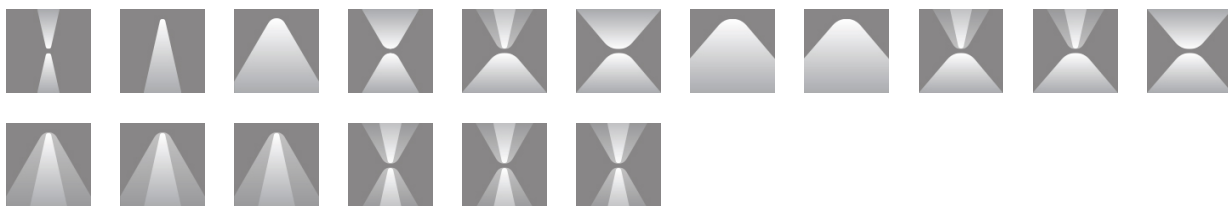
Size:
Ø 1" 31/32
4" 3/4
6" 7/8



[twoway - opal + blade](#)

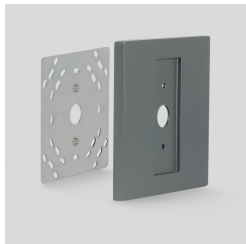
Size:
Ø 1" 31/32
4" 3/4
6" 3/32

OPTICS



See accessories in the next page

WALL PLATE TULA ANTHRACITE

Arcluce Code **X-TU-WPCUS-16**Code Ref. **1099379X-16US****TECHNICAL INFORMATION****Color** Grey - 16**Weight** 0.88 lb

WALL PLATE TULA ALUMINIUM

Arcluce Code **X-TU-WPCUS-21**Code Ref. **1099379X-21US****TECHNICAL INFORMATION****Color** Aluminium - 21**Weight** 0.88 lb