

Manufactured in the USA - IBEW



## Features

- 20° - 40° beam spread
- Framing shutters included
- Stock or custom, steel or glass patterns
- Numerous mounting options and accessories

## Construction

- Steel housing with black, white or silver finish
- Accepts up to 2 accessories
- Weight: 5.5 lbs.

## Optics

- 20°-40° Zoom optics system

## Electrical

- Integral electronic driver
- Meets FCC 47 CFR Part 15/18 Requirements
- 90-305 VAC, 50/60 Hz
- Power Consumption: 28W
- Do not install on a circuit containing a dimmer.
- DMX Addressing is RDM-only (No Onboard DMX)



COLORMIX

\* Specification sheets are subject to change without notice.

# MOSAIC Profile

Color Mix Pattern & Framing Projector



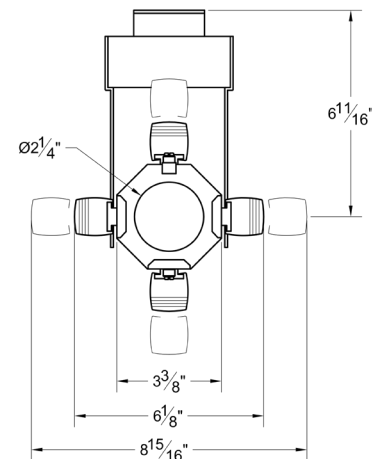
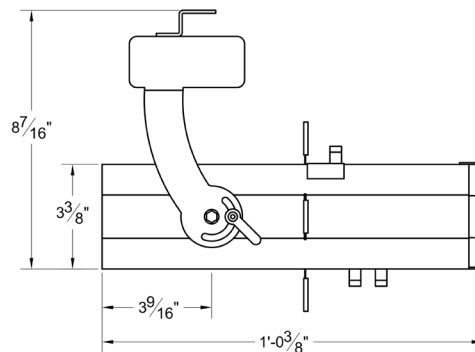
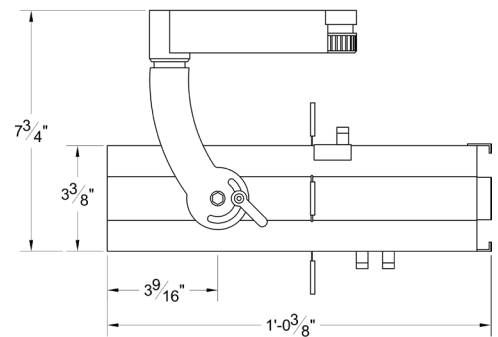
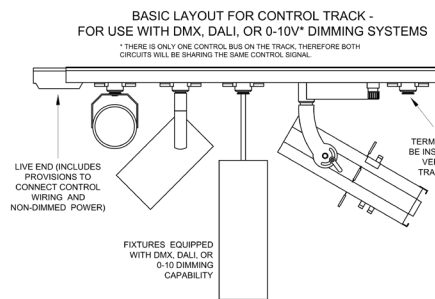
5 Holt Drive,  
Stony Point, NY 10980  
845-947-3034  
www.tsight.com

## Color Mixing - Tunable White

The Mosaic Profile is a color mixing and variable white pattern and framing projector with high-CRI output that is tunable between 1650K-8000K. Featuring framing shutters and DMX control, it is designed to blend into any architectural space, making it a perfect choice for museums, retail applications and restaurants.

### Key Features:

- 1000 Lumen Output
- 4 DMX Channels
- Tunable range: 1650 - 8000K tunable white.
- 90+ CRI
- Dimmable from 100 - 0.1% at constant CCT
- <2 MacAdam ellipse over 50,000 hour life
- On-board Bluetooth Low Energy (BLE) included in every fixture



## Ordering Matrix

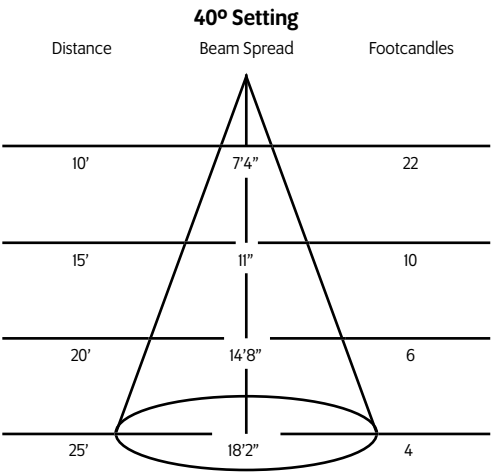
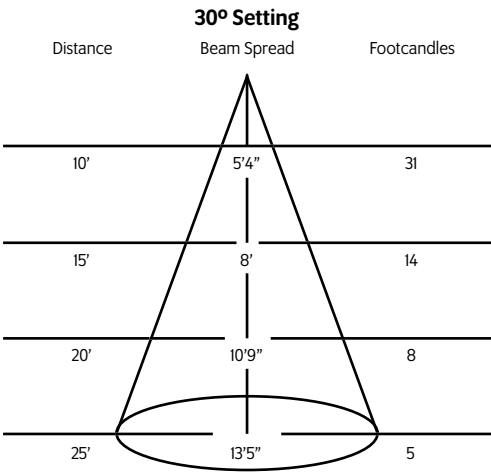
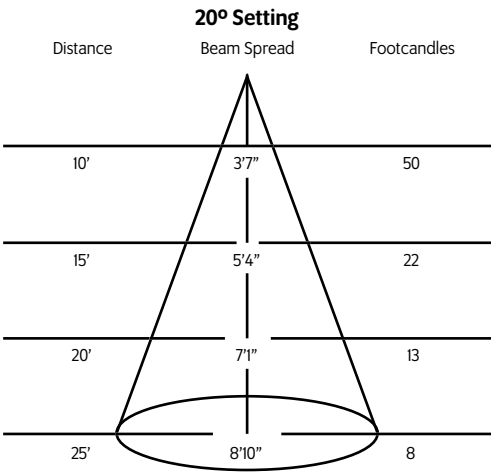
Model	Finish	Mounting	Dimming*
MPRO	B - Black W - White S - Silver CC - Custom Color	See Mounting Options	BT = Bluetooth DX = DMX / RDM

\* Maximum Ambient Temperature 40° C

Example: MPRO-B-N4-DX

MPRO - \_\_\_\_\_ - \_\_\_\_\_ - \_\_\_\_\_

Photometric Data 4000° K 95CRI



Mounting Options

- GAC** Track adapter for global pulse track.
- N4** Mounting for Data Bus 2-circuit specification e-series grade track. 120V.
- DT2** Track adapter for SpecTrack 2-Circuit data track. 120V.
- N5** Mounting for Data Bus 2-circuit specification e-series grade track. 277V.
- HDT2** Track adapter for SpecTrack 2-Circuit data track. 277V.
- USI\*** 6 5/8" x 1 1/2" Unistrut adapter.
- MN\*** Medium duty pipe clamp for small to large fixtures. For pipes up to 2" O.D.
- CM3\*** Canopy mount.
- IG\*** (Blue tooth, 010V dimming, lutron ecosystem only).

Accessories

- |                |                                            |
|----------------|--------------------------------------------|
| <b>CF6</b>     | Color Frame                                |
| <b>SN6</b>     | Snoot/Hood                                 |
| <b>PH6</b>     | Pattern Holder                             |
| <b>PD6</b>     | Pattern Donut                              |
| <b>SPE</b>     | Stock Pattern Steel                        |
| <b>CPE</b>     | Custom Pattern Steel                       |
| <b>GPE</b>     | Custom Pattern Glass                       |
| <b>DF6</b>     | Dichroic Color Filter                      |
| <b>GF6-702</b> | UV Blocking Filter                         |
| <b>CC18</b>    | Coiled Cord                                |
| <b>5300</b>    | Mini Spin (variable speed pattern rotator) |

Extension Wands

- |              |               |
|--------------|---------------|
| <b>SP 12</b> | 12" Stem      |
| <b>SP 18</b> | 18" Stem      |
| <b>SP 24</b> | 24" Stem      |
| <b>SP X</b>  | Custom Length |

Patterns

For standard and custom patterns please see the pattern specification sheet.



[Click here to download pattern datasheet.](#)

Slingshot



The Slingshot allows you to cast the output of a Times Square Lighting ellipsoidal at a right angle. This allows flexibility in situations when the fixture is mounted horizontally but the desired aiming angle is vertical (or vice versa).

- LENGTH:** 6-3/4"
- WIDTH:** 4"
- DEPTH:** 4"
- RANGE OF MOTION:** 0° to 44°

MODEL	COLOR
SLMB	Black Slingshot
SLMW	White Slingshot

\* Contact factory for wiring details.

\* For notes on dimming, please [click here](#).