

LTR-4RD (SH)

LITEISTRY 4" ROUND NON-CONDUCTIVE SHOWER DOWNLIGHT

LITEISTRY™

FEATURES

- 4" architectural LED downlight delivering 600 – 2500 lm
- Non-conductive dead-front trim
- Available with four regressed lens options
- Suitable for wet locations, covered ceiling
- IP65 rated (room side)
- Anti-microbial finish, optional
- 2700K - 5000K, 80+ and 90+ CRI options
- For New Construction (non-IC) applications
- Variety of dimming protocol options including 0-10V, DALI, DMX, Lutron Forward Phase and EcoSystem



RELATED PRODUCTS

- [Ø 3" LITEISTRY Family](#)
- [Ø 4" LITEISTRY Family](#)
- [Ø 6" LITEISTRY Family](#)

CONTROL TECHNOLOGY



SPECIFICATIONS

CONSTRUCTION

- New Construction (non-IC) applications
- Painted black durable steel platform with pre-installed bar hangers
- Pre-wired junction box with snap-on covers for easy access
- Snap-in connection from driver compartment allows easy installation
- Light Engine connections use plenum rated (CMP) cable

OPTICS

- Durable, non-conductive trim with 1/2" regressed lens
- Lens options include acrylic, polycarbonate, or tempered glass micro-prism, and clear acrylic
- Smooth room side lens surface for easy wipe down
- Available in white, black, or anti-microbial white trim color

ELECTRICAL

- Chip-on-board LED with 2 SDCM
- Multiple CCTs, 80+ or 90+ CRI
- Long LED life: L90 at >55,000 hours (TM-21)
- Universal voltage 120V–277V driver, 347V optional
- UL Class 2, inherent short circuit and overload protection, RoHS compliant
- Flicker free 0-10V dimming with 1% or <1% performance
- DALI, DMX, and Lutron Forward Phase and EcoSystem options
- Remote emergency controller and battery pack option available
- NX or Lutron Vive control options available

INSTALLATION

- Accommodates ceiling thickness up to 2"
- Universal adjustable mounting brackets also accept 0.5" EMT conduit or 1.5" or 0.75" lathing channel (by others) or Prescolite accessory bar hangers (B24 or B6)
- Light Engine/Driver fully serviceable from above or below the ceiling

CERTIFICATIONS

- cCSAus certified to UL 1598
- IP65 rated (room side) when properly installed per installation instructions
- Suitable for wet locations, covered ceiling. EMR: Suitable for damp locations.
- EMR: Certified under UL 924 standard for emergency lighting and power equipment
- Approved for 8 (4 in/4 out) No. 12AWG conductors rated for 90°C through wiring

WARRANTY

- 5 year warranty
- See [HLI Standard Warranty](#) for additional information

KEY DATA	
Lumen Range	600-2500
Wattage Range	8-28
Efficacy Range (LPW)	49-52*
Reported Life (Hours)	L90 / >55,000
Input Current (mA)	65-233 (120V)

*Based on 35K, 80 CRI



LTR-4RD (SH)

LITEISTRY 4" ROUND NON-CONDUCTIVE SHOWER DOWNLIGHT

DATE: _____ LOCATION: _____
 TYPE: _____ PROJECT: _____
 CATALOG #: _____

ORDERING GUIDE

Example: LTR-4RD-H-SL10L-DM1-LTR-4RD--SHSL35K8-WTAML

CATALOG # _____

HOUSING

LTR-4RD-H		Lumen Package		Lumen Output		Driver Options		Control Options		Voltage		Housing Options										
Aperture/Shape/Function																						
LTR-4RD-H	4" Round Downlight New Construction Housing	SL	Standard Lumen	06L	600	DM1	0-10V Dimming to 1%	NXE	NX Enabled, Dual SmartPorts ³	Standard	120-277V	EMR	Emergency Battery Pack with remote test switch and indicator light ⁶									
				10L	1000		DM01							0-10V Dimming to < 1%								
				15L	1500									DMX	DMX with RDM dimming to < 0.1% ²							
		ML	Medium Lumen	20L	2000		DALI								DALI Dimming to 1%	NXWE	NX Wireless Enabled ³	34	347V ⁵	DTS	Device Transfer Switch with Dimming Bypass ^{6,7}	
				25L	2500		2DM								Lutron Hi-Lume 2-wire Dimming to 1% (120V Forward Phase only) ²							NXWD
				EDM	Lutron Hi-Lume EcoSystem Dimming to 1% ²		LV							Lutron Vive Enabled, 0-10V (requires 0-10V driver)	GTD							
LVE	Lutron Vive Enabled, EcoSystem, (requires EDM)	F	Fuse																			

TRIM

LTR-4RD-T		Trim Style		Lumen Package		CCT		CRI	
Aperture/Shape/Function									
LTR-4RD-T	4" Round Downlight Light Engine/Trim Assembly	SH	Non-Conductive Shower Trim	SL	Standard Lumen	27K	2700K	8	80+CRI
				ML	Medium Lumen	30K	3000K	9	90+CRI
						35K	3500K		
						40K	4000K		
						50K	5000K ¹		

TRIM CONTINUED

Trim Color		Lens Options		Options	
WT	White Trim and Flange	AML	Acrylic, Micro-prism	AM	Antimicrobial ⁴
BT	Black Trim and Flange	PML	Polycarbonate, Micro-prism		
		GML	Tempered glass, Micro-prism		
		ACL	Acrylic, Clear		

Accessories

- B24** Set of two (2) 24" bar hangers for T-bar ceilings
- B6** Set of two bar hangers for ceiling joist up to 24" centers
- LiteGear** LiteGear® Inverter, 125VA-250VA
- LPS Series** LightPower Micro-Inverter, 20VA-55VA

Notes:

- 1 5000K available in 80+ CRI only.
- 2 2DM, EDM, DMX available in 10L-25L.
- 3 NX requires DM1 driver option.
- 4 AM available with White (WT) only. Consult factory for other colors.
- 5 347V requires DM1 driver option; not available in 06L or with Controls F, DTS, GTD, EMR.
- 6 Housing options (except Fuse) not available in combination.
- 7 DTS available with DM1, DM01, DALI, or EDM; not available with LVE.



DATE: _____ LOCATION: _____

TYPE: _____ PROJECT: _____

CATALOG #: _____

LTR-4RD (SH)

LITEISTRY 4" ROUND NON-CONDUCTIVE SHOWER DOWNLIGHT

CONTROLS

NX Distributed Intelligence™ Lighting Controls:

Supports applications in a variety of deployment options- wired, wireless, hybrid. Integrates with and enables a wide array of luminaires including those with SpectraSync™ Color Tuning Technology.



NX INTEGRATED CONTROLS REFERENCE								
NX Option	Sensor	Networkable	Scheduling	Occupancy	Daylight Harvesting	0-10V Dimming	On/off Control	Bluetooth® App Programming
NX Networked – Wired								
NXE	N/A	Yes	Yes	No	No	Yes	Yes	Requires NXBTC/R ¹
NX Networked – Wireless								
NXWE ²	N/A	Yes	Yes	No	No	Yes	Yes	No ³
NX Networked – Wired/Wireless								
NXWD	N/A	Yes	Yes	No	No	Yes	Yes	Requires NXBTC/R ^{1,3}

- 1 NXBTC/R needs to be plugged into an available NX SmartPort™ on the fixture network
- 2 Programming via App requires factory assistance
- 3 To program NXWE option, need to consult factory. If connected to an area controller, programming can be done from that

PERFORMANCE DATA TABLE

Performance data provided below is for 3500K, 80 CRI.

Lumen Package	Nominal Lumens	Lens Description	Delivered Lumens	Watts	LPW
06L	600	Acrylic Micro-prism	358	7.8	46
		Polycarbonate Micro-prism	350	7.8	45
		Tempered Glass Micro-prism	366	7.8	47
		Acrylic Clear	366	7.8	47
10L	1000	Acrylic Micro-prism	572	12.0	48
		Polycarbonate Micro-prism	559	12.0	47
		Tempered Glass Micro-prism	586	12.0	49
		Acrylic Clear	586	12.0	49
15L	1500	Acrylic Micro-prism	818	18.6	44
		Polycarbonate Micro-prism	800	18.6	43
		Tempered Glass Micro-prism	838	18.6	45
		Acrylic Clear	838	18.6	45
20L	2000	Acrylic Micro-prism	1109	22.1	50
		Polycarbonate Micro-prism	1084	22.1	49
		Tempered Glass Micro-prism	1136	22.1	51
		Acrylic Clear	1136	22.1	51
25L	2500	Acrylic Micro-prism	1361	27.8	49
		Polycarbonate Micro-prism	1330	27.8	48
		Tempered Glass Micro-prism	1394	27.8	50
		Acrylic Clear	1394	27.8	50

LTR-4RD (SH)

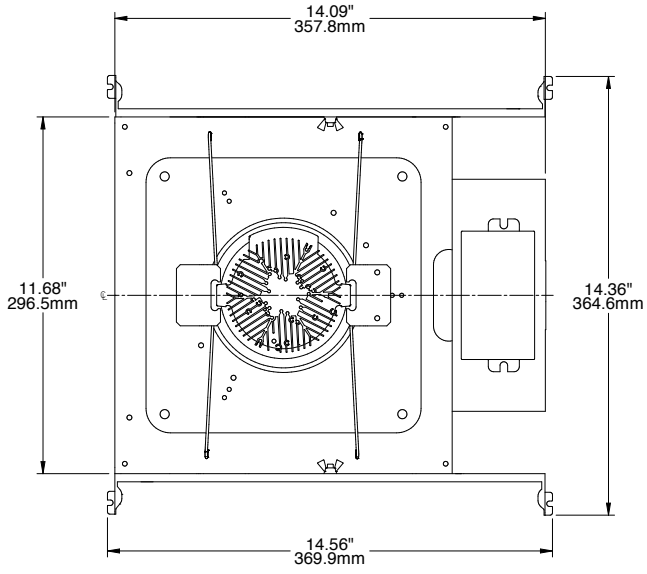
LITEISTRY 4" ROUND NON-CONDUCTIVE SHOWER DOWNLIGHT

DATE: _____ LOCATION: _____

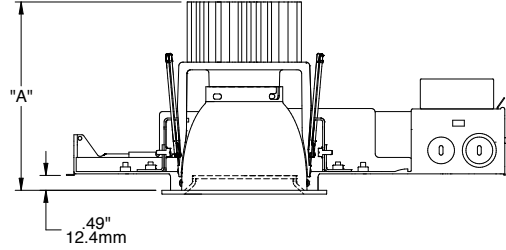
TYPE: _____ PROJECT: _____

CATALOG #: _____

DIMENSIONS



Top View



Dimensional Data		
Aperture		4.00" (101.6mm)
Flange	Standard	5.39" (136.9mm)
Ceiling Cutout	Standard	5.00" (127.0mm)
Ceiling Thickness		0.50" to 2.00" (12.7mm to 50.8mm)

Lumen Package	"A"
06L-15L	4.97" (126.2mm)
20L-25L	6.15" (156.2mm)

SCA Sloped Ceiling Adapter accessory available, see [LTR-SCA specification sheet](#) and [installation instructions](#) for dimensional data and other details.

LTR-4RD-H-SH

LTR-4RD (SH)

LITEISTRY 4" ROUND NON-CONDUCTIVE SHOWER DOWNLIGHT

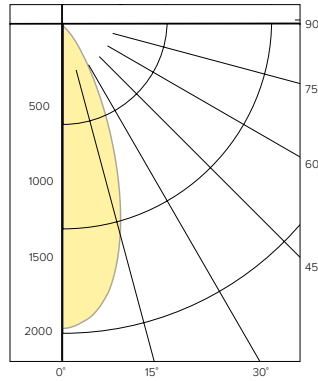
PHOTOMETRY

LTR-4RD-H-ML20L-DM1 / LTR-4RD-T-SHML35K8WTAML

LUMINAIRE DATA

Test No.	20.01609
Description	Acrylic Micro-prism lens, 3500K, 80 CRI
Delivered Lumens	1109
Watts	22.1W
Efficacy	50
Mounting	Recessed
Spacing Criterion	0.7
Beam Angle (FWHM)	41

POLAR GRAPH



CANDELA DISTRIBUTION

Degree	Candela
0	1977
5	1920
15	1412
25	654
35	226
45	75
55	24
65	11
75	4
85	1
90	0

LUMINANCE DATA*

Vertical Angle	Average
45°	14790
55°	5892
65°	3600
75°	2428
85°	1045

*Candela/Square Meter

ZONAL LUMEN SUMMARY

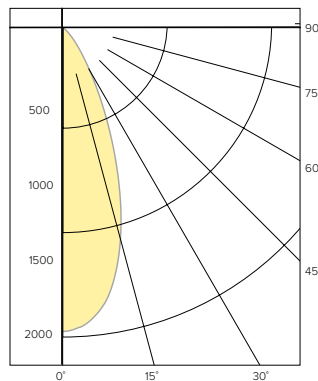
Zone	Lumens	% Luminaire
0-40	1011	91.1
0-60	1093	98.5
0-90	1109	100.0
0-180	1109	100.0

LTR-4RD-H-ML20L-DM1 / LTR-4RD-T-SHML35K8WTPML

LUMINAIRE DATA

Test No.	20.01611
Description	Polycarbonate Micro-prism lens, 3500K, 80 CRI
Delivered Lumens	1084
Watts	22.1W
Efficacy	49.1
Mounting	Recessed
Spacing Criterion	0.7
Beam Angle (FWHM)	41

POLAR GRAPH



CANDELA DISTRIBUTION

Degree	Candela
0	1938
5	1882
15	1381
25	641
35	222
45	73
55	23
65	10
75	4
85	2
90	0

LUMINANCE DATA*

Vertical Angle	Average
45°	14450
55°	5607
65°	3262
75°	2152
85°	978

*Candela/Square Meter

ZONAL LUMEN SUMMARY

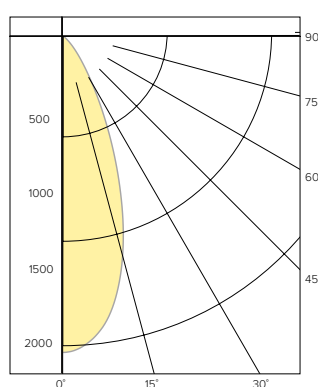
Zone	Lumens	% Luminaire
0-40	989	91.3
0-60	1069	98.6
0-90	1084	100.0
0-180	1084	100.0

LTR-4RD-H-ML20L-DM1 / LTR-4RD-T-SHML35K8WTGML

LUMINAIRE DATA

Test No.	20.01612
Description	Tempered Glass Micro-prism lens, 3500K, 80 CRI
Delivered Lumens	1136
Watts	22.1W
Efficacy	51.5
Mounting	Recessed
Spacing Criterion	0.7
Beam Angle (FWHM)	41

POLAR GRAPH



CANDELA DISTRIBUTION

Degree	Candela
0	2065
5	1997
15	1458
25	672
35	228
45	73
55	23
65	10
75	5
85	1
90	0

LUMINANCE DATA*

Vertical Angle	Average
45°	14460
55°	5608
65°	3480
75°	2454
85°	1445

*Candela/Square Meter

ZONAL LUMEN SUMMARY

Zone	Lumens	% Luminaire
0-40	1039	91.5
0-60	1119	98.5
0-90	1136	100.0
0-180	1136	100.0

LTR-4RD (SH)

LITEISTRY 4" ROUND NON-CONDUCTIVE SHOWER DOWNLIGHT

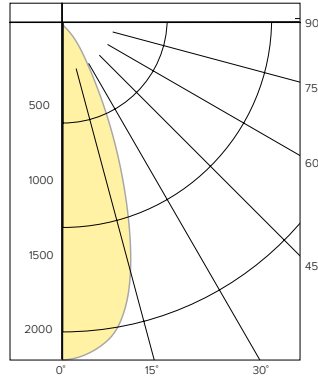
PHOTOMETRY CONTINUED

LTR-4RD-H-ML20L-DM1 / LTR-4RD-T-SHML35K8WTACL

LUMINAIRE DATA

Test No.	20.01613
Description	Acrylic Clear lens, 3500K, 80 CRI
Delivered Lumens	1136
Watts	22.1W
Efficacy	51.5
Mounting	Recessed
Spacing Criterion	0.7
Beam Angle (FWHM)	41

POLAR GRAPH



CANDELA DISTRIBUTION

Degree	Candela
0	2184
5	2136
15	1638
25	658
35	202
45	47
55	10
65	5
75	3
85	1
90	0

LUMINANCE DATA*

Vertical Angle	Average
45°	9400
55°	2390
65°	1794
75°	1420
85°	1191

*Candela/Square Meter

ZONAL LUMEN SUMMARY

Zone	Lumens	% Luminaire
0-40	1078	94.9
0-60	1127	99.2
0-90	1136	100.0
0-180	1136	100.0

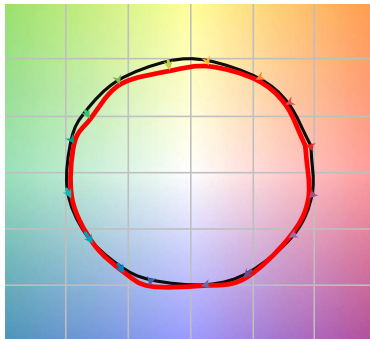
LUMEN MULTIPLIER

Option	27K8	30K8	35K8	40K8	50K8	27K9	30K9	35K9	40K9
Multiplier	0.94	0.98	1.00	1.01	1.02	0.81	0.84	0.85	0.85

Photometrics are published below at a nominal 3500 Kelvin, 80+ CRI. This table may be used to approximate the lumen values at different Kelvin temperatures. Power consumption would stay the same.

TM-30 DATA

COLOR VECTOR GRAPHIC 3500K, 90 CRI



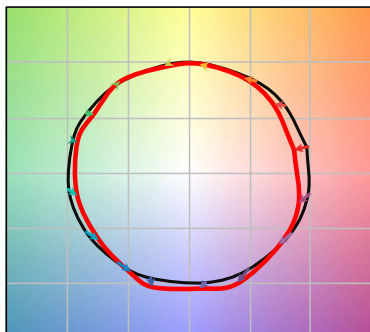
— Reference Illuminant — Test Source

COLOR DISTORTION GRAPHIC 3500K, 90 CRI



TEST RESULTS - 3500K		
Value	80+ CRI	90+ CRI
R _i	84	88
R _g	95	95
CCT (K)	3411	3419
D _{uv}	0.0015	0.0042
x	0.4120	0.4147
y	0.3974	0.4052
CIE R _a	84	93
CIE R _g	11	62

COLOR VECTOR GRAPHIC 3500K, 80 CRI



— Reference Illuminant — Test Source

COLOR DISTORTION GRAPHIC 3500K, 80 CRI





DATE: _____ LOCATION: _____

TYPE: _____ PROJECT: _____

CATALOG #: _____

LTR-4RD (SH)

LITEISTRY 4" ROUND NON-CONDUCTIVE SHOWER DOWNLIGHT

ELECTRICAL DATA

DRIVER DATA		
Input Voltage	120-277 V	347 V
Input Frequency	50/60 Hz	50/60 Hz
Power Factor	≥0.90	≥0.90
THD	<20%	<20%
EMI Filtering (FCC 47 CFR Part 15)	Class A	Class A

* Values for DM1 option shown, values for other dimming options may vary.

WATTAGE DATA		
Lumen Output	Nominal Lumens	Wattage
06L	600	8
10L	1000	12
15L	1500	19
20L	2000	23
25L	2500	28

* Wattage may vary based on configuration and options selected

ADDITIONAL INFORMATION

DIMMING COMPATIBILITY CHART		
Dimming Driver	Manufacturer	Web Link
DM1 /DM01	Lutron DVTV	http://bit.ly/11jSvZg
DM1	Leviton AWRMG-7xx, AWSMG-7xx, AWSMT-7xx	http://bit.ly/1BJn2R9
EDM	Lutron	http://bit.ly/1vtjHAI
2DM	Lutron	http://bit.ly/1S4WjXK

DMX

See instruction sheet on www.prescolite.com for connection & installation information.

Central Inverters

For full fixture output in back-up mode, we recommend you visit www.dual-lite.com for your Central Lighting Inverter options. Please contact your local Hubbell representative for any assistance with proper sizing and loading of your inverter selection. Central lighting inverters must be ordered separately.LiteGear: www.dual-lite.com/products/litegear_lg_seriesLPS Series: www.dual-lite.com/products/lps