

### KEY FEATURES

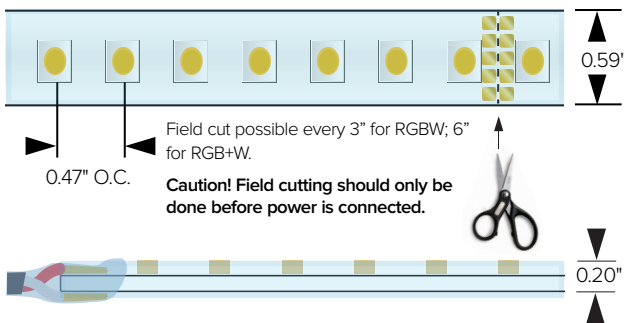
- High output RGB colors along side warm white. Introducing a white spectrum with saturated sharp RGB tones working together to create soft pastel tones or different tones of white enriched with RGB colors.
- Ideal for IP66 outdoor applications such as cove, niche, architectural decorative application, lighting accents, custom and OEM product designs/chandliers.
- Sold per foot and manufactured to specified lengths with factory attached end preps.
- Features 2-circuit substrate for optimum heat dissipation, minimizing voltage drop while increasing run lengths per power feed, standardizing electrical flow over entire length of the strip for maximum product reliability.
- Features double sided solder points for maximum conductivity and durability.
- Pre-assembled to specific lengths with various connector options for project requirements and efficient power configuration.
- Max continuous length: up to 16' per run
- Multiple DMX512 driver options available.



### DETAILS

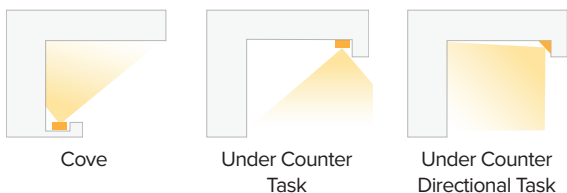
|                          |  |
|--------------------------|--|
| <b>Spacing</b>           | 0.47" OC LED Spacing   |
| <b>LEDs</b>              | 25 LEDs per foot   |
| <b>Wattage</b>           | 4.4W/ft (RGBW)   |
| <b>Color Temp</b>        | RGBW Quad Chip: Red 625nm / Green 520nm / Blue 450nm / 3000K   |
| <b>Color Consistency</b> | Bin centered on the Planck curve with a 2 step MacAdam tolerance.  |
| <b>End Preps</b>         | Factory preped end preps available (See Page 2)  |
| <b>Mounting</b>          | Includes installation-ready 3M tape adhesive for simplified installation directly to mounting channel or application surface.  |
| <b>Installation</b>      | Optional aluminum channels with base and cover can be used to install decorative, protective covers.   |
| <b>Power Supply</b>      | Listed Class 2 output, 24V DC power supply required  |
| <b>Listing</b>           | cULus Class 2 Listed E471161<br>Tested in accordance with LM-79-08   |
| <b>Compliance</b>        | ROHS compliant<br>MRI Safe, driver to be mounted outside of MRI room. To be use with plastic or aluminum profiles only. To be installed with adhesive or MRI safe hardware only, no factory provided mounting hardware to be used. |
| <b>Warranty</b>          | 5 year warranty  |

### DIMENSIONAL DRAWINGS



Duratape features double-sided solder points for maximum continuity for long lifespan.

### DESIGN INSTALLATION EXAMPLES



### FIXTURE DATA

| Model | Efficacy Lm/Wt | Lm/Ft | Wt/Ft |
|-------|----------------|-------|-------|
| RGBW* | 36             | 158.5 | 4.4   |

\* Meets Title 24 High efficacy rating.

### LED DATA

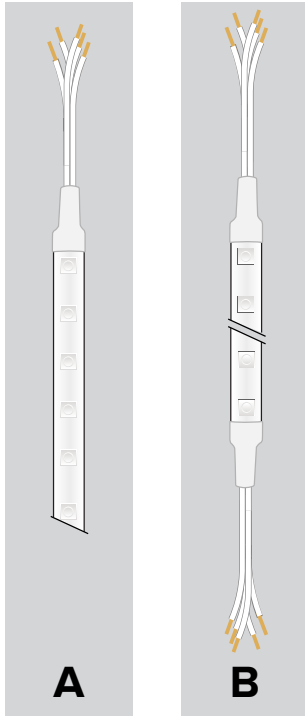
| Model | Wt/LED | Viewing Angle | Lifespan at 90% drive |
|-------|--------|---------------|-----------------------|
| RGBW  | 0.18   | 120°          | 40,000hrs             |

\* LEDs operating at 90% of LED manufacturers maximum current rating.

| PRODUCT CODE | INTENSITY | WATTAGE | IP RATING | LED COLOR | VOLTAGE | + | END PREP | + | MOUNTING | + | POWER SUPPLY |
|--------------|-----------|---------|-----------|-----------|---------|---|----------|---|----------|---|--------------|
|--------------|-----------|---------|-----------|-----------|---------|---|----------|---|----------|---|--------------|

DL — Duratape™ HO — High Output 44 — 4.4 W/ft O — Outdoor IP66 RGBW — RGBW 24 — 24 VDC

### END PREPS AND CONNECTORS (REQUIRED) - Choose 1



#### REQUIRED END PREPS:

(One required for each run of tape)

#### A

**07UX4CBL1** (4-circuit RGBW or RGB+W)  
Factory attached single 4 circuit lead wire prep. 24" five conductor Lead wire/dead end allows for connection to power at lead end and field trim of Duratape product at the other end.

**07UX4ADDCBL: ADDITIONAL LEAD WIRE**  
(4-circuit RGBW or RGB+W)

Additional lead wire purchased per foot and factory attached to specified run leads. Lead wire can be field cut to desired length.

#### B

**07UX4CBL2** (4-circuit RGBW or RGB+W)  
Factory attached double ended 4 circuit lead wire prep. 24" five conductor lead wire at both ends. One end can be used for power connectivity while the other end can be used for interconnection to run to an additional length of Duratape.

**07UX4ADDCBL: ADDITIONAL LEAD WIRE**  
(4-circuit RGBW or RGB+W)

Factory attached single 4 circuit lead wire prep. 24" five conductor Lead wire/dead end allows for connection to power at lead end and field trim of Duratape product at the other end.

### PROFILE OPACITY LEVEL KEY:



**Uniform**  
Direct View

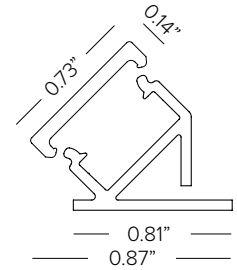
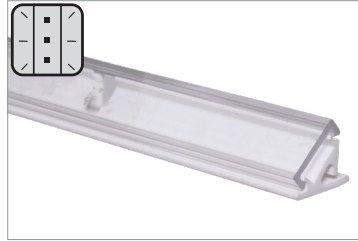


**Blended**  
Direct / Indirect View



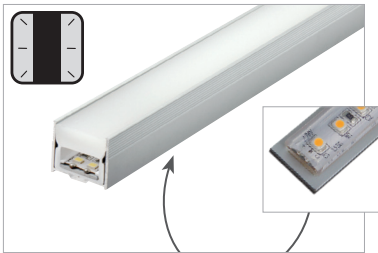
**Pixelated**  
Indirect View

### SURFACE PROFILES



**DL-C-45-MCH-4** (Base, REQUIRED)  
45° mounting base (white) for 45° mounted linear applications. Available in 4' lengths.

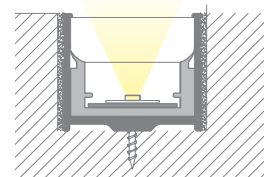
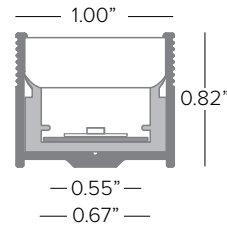
**DL-C-45-CVR-4-C** (Cover, Clear)  
**DL-C-45-CVR-4-F10/F30/F60** (Cover, Frosted)  
45° mounting base cover. Available in 4' lengths.



**PRINTC-G**  
Rigid high impact resistant PMMA profile complete with a white plastic diffuser lensed channel for recessed walk over installation. Complete with track for easy strip insertion. Available in 3.28ft (1M) lengths.



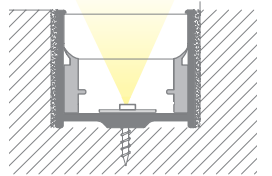
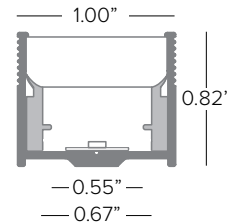
**KTRPRINTC-G**  
2+2 PC end caps



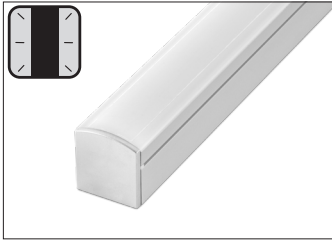
**PRINTC-GUS**  
Rigid high impact resistant PMMA profile complete with two part white plastic diffuser lens and aluminum channel for surface or recessed mounting. Available in 3.28ft (1M) lengths.



**KTRPRINTC-G**  
2+2 PC end caps

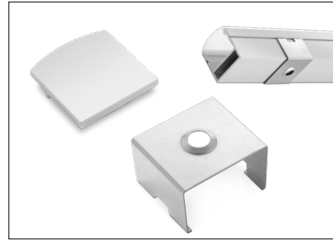


### SURFACE PROFILES CONT.



#### PRAP-U

Surface mount aluminum profile. Anodized aluminum rigid profile complete with opal translucent diffuser cover. Available in 79in (2M) lengths.



#### KTPRAP-UEC

5 + 5 silver color end caps

#### KTPRU-CL

5 sets of clips

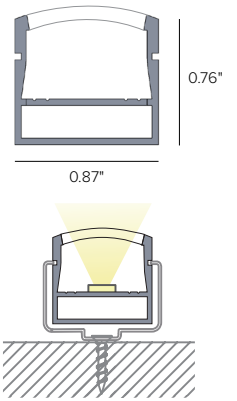


#### OR-DEV

Set of steel supports required with use of KTORDEV-U.

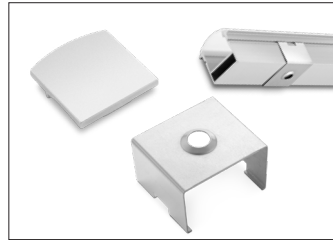
#### KTORDEV-U

Set of aluminum mounting heads required with use of OR-DEV.



#### PRIN-U

Flush mount aluminum profile. Anodized aluminum rigid profile complete with opal translucent diffuser cover. Available in 79in (2M) lengths.

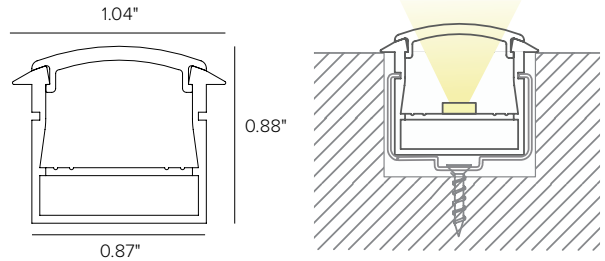


#### KTPRIN-UEC

5 + 5 silver color end caps

#### KTPRU-CL

5 sets of clips



#### PRAN-U

45° aluminum profile. Anodized aluminum rigid profile complete with opal translucent diffuser cover. Available in 79in (2M) lengths.

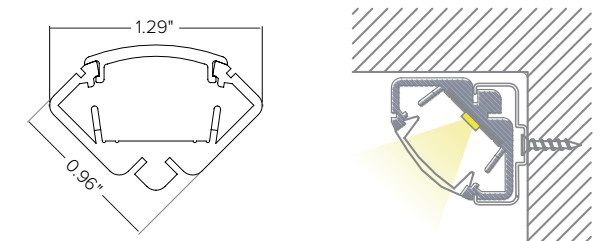


#### KTPRAN-UEC

5 + 5 silver color end caps

#### KTPRAN-UCL

5 sets of clips



| Power Supply (REQUIRED) | Type  | Wattage | Input/Output Voltage | Dimmable              | IP Rating        | Output     | Dimensions                  |
|-------------------------|---|---------|----------------------|-----------------------|------------------|------------|-----------------------------|
| <b>DEDDX1001244CDMX</b> | ELECTRONIC ADDRESSABLE DMX DRIVER   | 100W    | 120-277V / 24V       | DMX CONTROL 4 CHANNEL | NEMA3R ENCLOSURE | UL CLASS 2 | 12" x 12" x 4" <sup>1</sup> |
| <b>DEDDX2002244CDMX</b> | ELECTRONIC ADDRESSABLE DMX DRIVER   | 2X100W  | 120-277V / 24V       | DMX CONTROL 4 CHANNEL | NEMA3R ENCLOSURE | UL CLASS 2 | 12" x 12" x 4" <sup>1</sup> |
| <b>DEDD100DMX</b>       | ELECTRONIC ADDRESSABLE DMX DRIVER STANDALONE, <b>UL LISTED ENCLOSURE PROVIDED BY OTHERS</b> | 100W    | 120-277V / 24V       | DMX DIMMING 4 CHANNEL | N/A              | UR CLASS 2 | 9.06" x 3.15" x 1.18"       |

<sup>1</sup> Dimensions include enclosure with mounting bracket.

\* Constant voltage drivers 50/60HZ, voltage regulated with short circuit protection. Operating temperature -40 C- 80° C

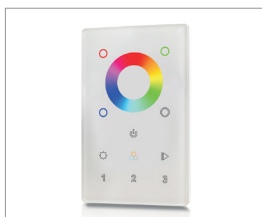
\* Installation of power supply must be compliant to Class 2 installation standards. Refer to NEC and local building code requirements.

### MAXIMUM INTERCONNECTED TAPE LENGTH PER DRIVER

| Fixture Wattage | Driver Wattage |      |      |      |          |          |          |          |
|-----------------|----------------|------|------|------|----------|----------|----------|----------|
|                 | 40W            | 60W  | 96W  | 90W  | 2X90W    | 3X90W    | 100W     | 2X100    |
|                 | 4W             | 8FT  | 12FT | 19FT | 18FT     | (2) 18FT | (3) 18FT | 20FT     |
| 4.4W/ft         | 7FT            | 10FT | 17FT | 16FT | (2) 16FT | (3) 16FT | 18FT     | (2) 18FT |

### Controllers:

| Part No.              | Type  | Application | Voltage   | Listing | Dimensions           | Channels | Zones | Scenes |
|-----------------------|---|-------------|---|---------|----------------------|----------|-------|--------|
| <b>SWITCH20</b>       | RGBW touch DMX512 wall control keypad with sensitive glass touch panel, white finish.   | Indoor      | 12-24V DC                                       | UL      | 4.7" x 3.0" x 1.2"   | 12       | 3     | 1      |
| <b>TGDMXSLESAU9</b>   | Stand-alone DMX 1/2 Universe Programmable Controller with Easy to Use Software Interface  | Indoor Only | 5.5V DC   | ETL, UL | 5.3"W x 5.5"H x 1.9D | 256      | 1     | 20     |
| <b>TGDMXSLESAU11</b>  | Nicolaudie Slesa smart DMX interface, 2 DMX 512 universes, intuitive backlit keyboard programmable controller with easy to use software interface.  | Indoor      | 5VDC 120V AC (Plug in power supply included)    | ETL     | 6.3" x 3.6" x 1.8"   | 1024     | 5     | 99     |
| <b>TGDMXSTICKDE3B</b> | Nicolaudie intelligent wall control keypad with glass touch sensitive graphic display, stand-alone DMX 512, 2 universe programmable controller with easy to use software interface. Black finish. | Indoor      | 6-7V DC 120V AC (Plug in power supply included) | ETL     | 5.8" x 4.2" x 0.5"   | 1024     | 10    | 500    |
| <b>TGDMXSTICKDE3W</b> | Nicolaudie intelligent control keypad with glass touch sensitive graphic display, stand-alone DMX 512, 2 universe programmable controller with easy to use software interface. White finish.      | Indoor      | 6-7V DC 120V AC (Plug in power supply included) | ETL     | 5.8" x 4.2" x 0.5"   | 1024     | 10    | 500    |



SWITCH20



TGDMXSLESAU9



TGDMXSLESAU11



TGDMXSTICKDE3



a brand of **TARGETTI**

# DURATAPE™ RGBW

## IP66 OUTDOOR

### PHOTOMETRY

| DURATAPE RGBW  |            | POLAR GRAPH |
|----------------|------------|-------------|
| Fixture Power  | 4.4W       |             |
| Fixture Output | 158.5Lm/Ft |             |
| Kelvin Temp    | RGBW       |             |
| Beam Spread    | 120°       |             |
| IMax           | 317cd/klm  |             |
| Efficacy       | 36 Lm/W    |             |