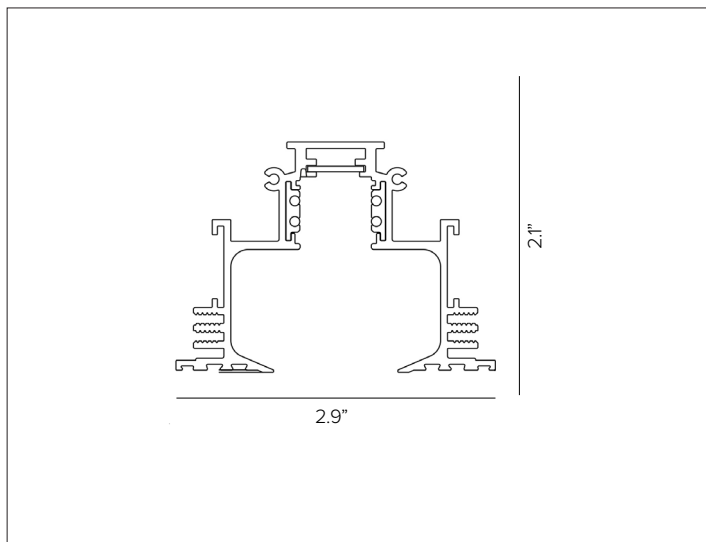
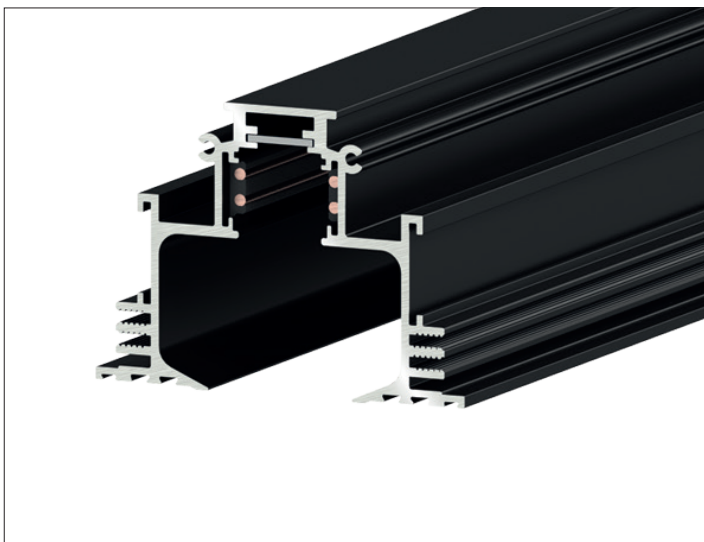


# FORTYEIGHT MULTISYSTEM EVO - RECESSED DEEP TRIMLESS

## Recessed Deep Trimless Track System



### CONCEPT

Recessed deep trimless mounted electrified track system.

### MECHANICAL CHARACTERISTICS

<b>Dimensions</b>	2.9"W X 2.1"H
<b>Materials</b>	Aluminum track with PVC insulated copper conductors that feed electricity to the fixture and provide attachment support.
<b>Finish</b>	<input type="radio"/> White <input checked="" type="radio"/> Black
<b>Power Connection</b>	Mechanical electrical polarized connections.
<b>Functionality</b>	Different mounting configurations are achievable using electrical feeds and connectors that make it possible to build a simple or complex systems.
<b>Mounting</b>	To be installed in surface or suspension configurations that is achieved through different available mounting options.
<b>Protection</b>	IP20

### ELECTRICAL CHARACTERISTICS

<b>Voltage</b>	48V DC. <b>Max of 30ft of track per individual power supply and/or max of 4 connectors per individual power supply.</b>
<b>Circuit</b>	1 circuit, 4 conductor
<b>Control</b>	0-10V or DALI / Wireless Bluetooth Casambi

### CERTIFICATIONS

cULus Class 2 Listed.  
RoHS3 EU 215/863

### WARRANTY

5 year limited warranty.

# FORTYEIGHT MULTISYSTEM EVO - RECESSED DEEP TRIMLESS

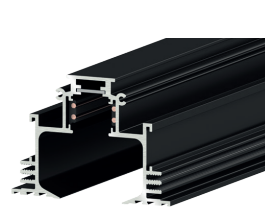
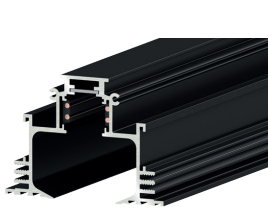
## SPECIFICATION INFORMATION



Ex: 9500-UL1/B-TA1-E / 1T6801 / S-9000/T / 9501-S-KL/B-E / S-9500/315 / DELV30148DJBX

1 - TRACK	2 - END CAP	3 - CUTTING TOOL	4 - ELECTRICAL FEED	5 - ELECTRICAL CONNECTOR	6 - MOUNTING	7 - INTERFACE	8 - POWER SUPPLY	9 - CONTROLLER
REQUIRED	REQUIRED	REQUIRED	REQUIRED	OPTIONAL	REQUIRED	OPTIONAL	REQUIRED	OPTIONAL

### 1 - TRACK (REQUIRED)



FORTYEIGHT MULTISYSTEM recessed deep trimless track, field cuttable with specialized tool (REQUIRED).

Finish  White  Black

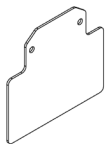
Part No. **9500-UL1/W2-TA1-E** **9500-UL1/B-TA1-E**

FORTYEIGHT MULTISYSTEM recessed deep trimless track, field cuttable with specialized tool (REQUIRED).

Finish  White  Black

Part No. **9500-UL2/W2-TA1-E** **9500-UL2/B-TA1-E**

### 2 - END CAP (REQUIRED)

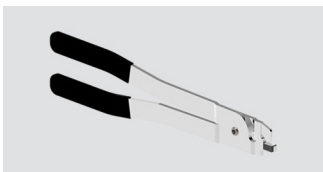


FORTYEIGHT MULTISYSTEM recessed deep trimless track metal end cap, 2pcs.

Finish  White  Black

Part No. **1T7171** **1T6801**

### 3 - CUTTING TOOL (REQUIRED)

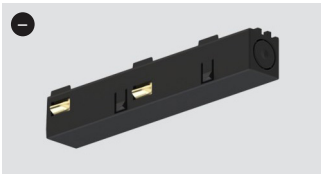


Cutting tool for track conductors.

Part No. **S-9000/T**

# FORTYEIGHT MULTISYSTEM EVO - RECESSED DEEP TRIMLESS

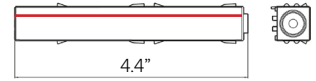
## 4 - ELECTRICAL FEED (REQUIRED)



Linear end feed polarity left.

Finish  White  Black

Part No. **9501-S-KL/W-E** **9501-S-KL/B-E**

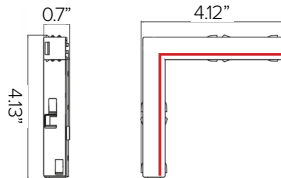


Linear end feed polarity right.

Finish  White  Black

Part No. **9501-S-KR/W-E** **9501-S-KR/B-E**

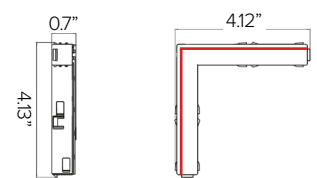
## 5 - ELECTRICAL CONNECTOR (OPTIONAL)



L – Polarized electrical joint connector, internal polarity. **Max of 5 connectors per individual power supply.**

Finish  White  Black

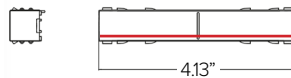
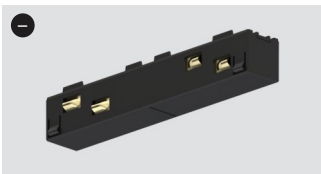
Part No. **9511-KI/W-E** **9511-KI/B-E**



L – Polarized electrical joint connector, external polarity. **Max of 5 connectors per individual power supply.**

Finish  White  Black

Part No. **9511-KE/W-E** **9511-KE/B-E**

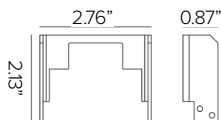
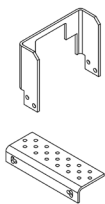


Linear – Polarized electrical joint connector. **Max of 5 connectors per individual power supply.**

Finish  White  Black

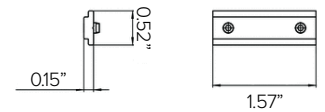
Part No. **9503-S-K/W-E** **9503-S-K/B-E**

## 6 – MOUNTING (REQUIRED)



Recessed track mounting bracket kit, 4ea. Includes 4ea lateral brackets and 2ea bridge brackets. **REQUIRED** 1 kit per 1M track and 2kits for 2M track.

Part No. **1T9583**



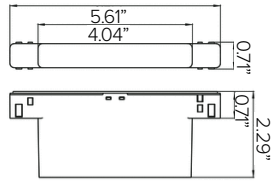
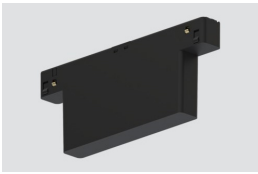
Linear joint connector, 2pcs.. **REQUIRED** for use with interconnected lengths track lengths.

Finish

Part No. **S-9500/314-W2** **S-9500/314-B**

# FORTYEIGHT MULTISYSTEM EVO - RECESSED DEEP TRIMLESS

## 7 – INTERFACE (OPTIONAL)



Wireless bluetooth interface. Generates a local bus per run for individual fixture control for up to 96W max or 64 fixtures. Can control fixtures in indoor applications via [Casambi wireless bluetooth protocol](#). **Only to be used with Dali/Wireless Bluetooth Casambi version of FORTYEIGHT fixture range.**

Finish  White  Black

Part No. **APP1-M-C0-9519/W-E** **APP1-M-C0-9519/B-E**

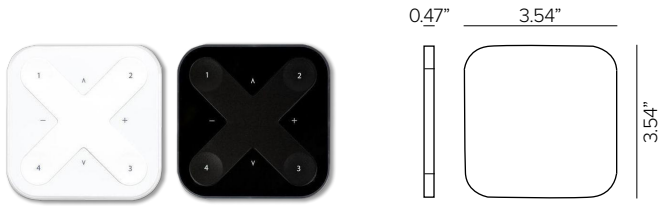
## 8 - POWER SUPPLY (REQUIRED)

ENCLOSURE								
Part No.	Wattage	Control	Dim Range	Rating	In / Out Voltage	Certification	Dimensions (Enclosure)	Description
<b>DELV30148DJBX</b>	30W	0-10V	1%	IP66	120-277V / 48V	UL CLASS 2	12.1" X 2.36" X 1.4"	MAGNITUDE SOLIDRIVE ELECTRONIC DRIVER WITH BUILT-IN JUNCTION BOX.
<b>DELV60148DJBX</b>	60W	0-10V	1%	IP66	120-277V / 48V	UL CLASS 2	12.1" X 2.36" X 1.4"	MAGNITUDE SOLIDRIVE ELECTRONIC DRIVER WITH BUILT-IN JUNCTION BOX.
<b>DELV96148DJBX</b>	96W	0-10V	1%	IP66	120-277V / 48V	UL CLASS 2	12.1" X 2.36" X 1.4"	MAGNITUDE SOLIDRIVE ELECTRONIC DRIVER WITH BUILT-IN JUNCTION BOX.
<b>PS052</b>	40W	VIA DALI / WIRELESS CASAMBI INTERFACE	0%	NEMA3R	120-277V / 48V	UL CLASS 2	6.3" x 10.79" x 2.17"	MEAN WELL HLG ELECTRONIC DRIVER COMPATIBLE WITH FORTYEIGHT DALI / WIRELESS BLUETOOTH CONTROL CASAMBI INTERFACE.
<b>PS051</b>	60W	VIA DALI / WIRELESS CASAMBI INTERFACE	0%	NEMA3R	120-277V / 48V	UL CLASS 2	6.3" x 10.79" x 2.17"	MEAN WELL HLG ELECTRONIC DRIVER COMPATIBLE WITH FORTYEIGHT DALI / WIRELESS BLUETOOTH CONTROL CASAMBI INTERFACE.
<b>PS050</b>	96W	VIA DALI / WIRELESS CASAMBI INTERFACE	0%	NEMA3R	120-277V / 48V	UL CLASS 2	6.3" x 10.79" x 2.17"	MEAN WELL HLG ELECTRONIC DRIVER COMPATIBLE WITH FORTYEIGHT DALI / WIRELESS BLUETOOTH CONTROL CASAMBI INTERFACE.
STANDALONE								
Part No.	Wattage	Control	Dim Range	Rating	In / Out Voltage	Certification	Dimensions (Standalone)	Description
<b>DELV30148D</b>	30W	0-10V	1%	IP66	120-277V / 48V	UL CLASS 2	7.5" X 2.36" X 1.4"	MAGNITUDE SOLIDRIVE ELECTRONIC STANDALONE DRIVER. <b>UL LISTED ENCLOSURE PROVIDED BY OTHERS.</b>
<b>DELV60148D</b>	60W	0-10V	1%	IP66	120-277V / 48V	UL CLASS 2	7.5" X 2.36" X 1.4"	MAGNITUDE SOLIDRIVE ELECTRONIC STANDALONE DRIVER. <b>UL LISTED ENCLOSURE PROVIDED BY OTHERS.</b>
<b>DELV96148D</b>	96W	0-10V	1%	IP66	120-277V / 48V	UL CLASS 2	7.5" X 2.36" X 1.4"	MAGNITUDE SOLIDRIVE ELECTRONIC STANDALONE DRIVER. <b>UL LISTED ENCLOSURE PROVIDED BY OTHERS.</b>

**FORTYEIGHT MULTISYSTEM EVO - RECESSED DEEP TRIMLESS**

**9 - CONTROLLER (OPTIONAL)**

**COMPATIBLE WITH WIRELESS BLUE TOOTH CASAMBI VERSION ONLY FOR INDIVIDUAL FIXTURE CONTROL.**



Casambi Xpress remote controller, indoor mounted only. Four programmable presets. CR2430 battery (Included). **For DALI / Wireless Bluetooth Casambi control only. Each controller can program up to 4ea APP1-M-C0-9519 interfaces.**

Finish     White         Black

Part No.    **SWITCH26**        **SWITCH25**